

What user should do when they face issue to launch Ecostruxure power commission??

Ecostruxure power commission needs to follow mandatory prerequisites :

Please refer installation guide with the help of local IT team before installing EPC in your machine by referring this link :

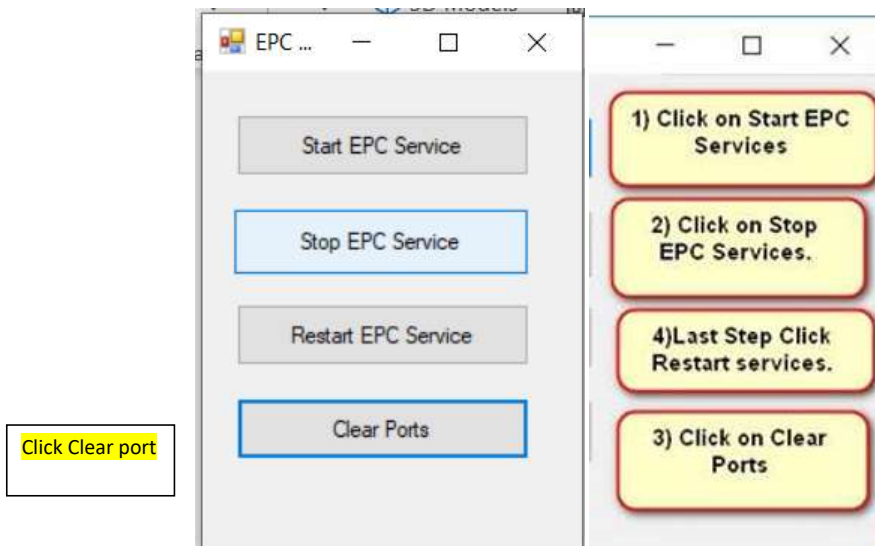
<https://www.se.com/us/en/product-range/62980-ecostruxure-power-commission-software/#documents>

#### Error – Port In use

Run clear port utility file in your machine (utility )file is attached .

How to run clear port utility file :

- Before running this application make sure that EPC is not running on your computer. The application is attached as a zip file. Please extract the content of the zip file before running the application.
- Please see the picture below to execute the attached application.



Note: \*\*Click clear ports "

Commented [RK1]:

After running this application, Launch EPC.