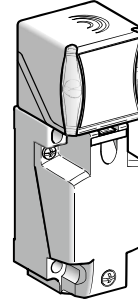
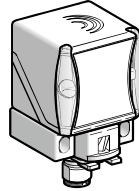


Inductive proximity sensors

OsiSense XS Application

Factor 1 sensors for ferrous or non ferrous material detection and welding applications. Plastic case, 40 x 40 mm front face. 5 position turret head

Sensor	Flush mountable in metal	
Dimensions	40 x 40 x 70 mm	40 x 40 x 117 mm



Nominal sensing distance (Sn)	20 mm
--------------------------------------	-------

References

4-wire ---	PNP NO+NC	XS9C2A1PCM12	XS9C4A1PCP20 (1)
	NPN NO+NC	XS9C2A1NCM12	XS9C4A1NCP20 (1)

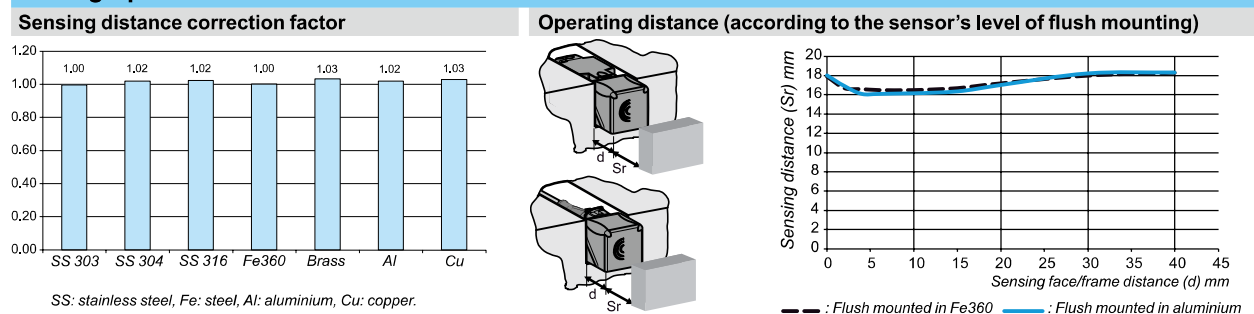
XS9C4...P20 sensors are available with an ISO M20 cable entry and can be supplied with a Pg 13.5 (e.g. XS9C4A1PCG13) or a 1/2" NPT (e.g. XS9C4A1PCN12) cable entry: please consult our Customer Care Centre for more information.

Weight (kg)	0.110	0.220
--------------------	-------	-------

Characteristics

Product certifications		UL, CSA, CE	
Conformity to standards		IEC 60947-5-2	
Connection		M12 connector (4-pin)	Screw terminals, clamping capacity 4 x 1.5 mm ² / 4 x 16 AWG
Operating zone		0...16 mm	
Differential travel		3...15% of Sr	
Repeat accuracy		< 3%	
Immunity to magnetic fields		< 250 mTesla	
Degree of protection	Conforming to IEC 60529 and DIN 40050	IP 65, IP 67 and IP 69K	
Temperature	Storage	- 40....+ 85°C	
	Operation (2)	- 25....+ 70°C	
Material		Case: PBT	
Vibration resistance	Conforming to IEC 60068-2-6	25 gn, amplitude ± 2 mm (f = 10...55 Hz)	
Shock resistance	Conforming to IEC 60068-2-27	50 gn for 11 ms	
Indicators		Output state: yellow LED. Supply on: green LED	
Rated supply voltage	4-wire ---	--- 12...24 V with protection against reverse polarity	
Voltage limits (including ripple)	4-wire ---	--- 10...36 V	
Current consumption, no-load	4-wire ---	< 30 mA	
Switching capacity	4-wire ---	< 200 mA with protection against overload and short-circuit	
Voltage drop, closed state	4-wire ---	< 2 V	
Maximum switching frequency	4-wire ---	250 Hz	
Delays	First-up	< 15 ms	
	Response	< 2.5 ms	
	Recovery	< 2.5 ms	

Setting-up



(1) These sensors are supplied without a cable gland. A suitable Pg 13.5 cable gland is available (reference XSZPE13).

(2) Sensors are available for very low temperatures (suffix TF: - 40°C, + 70°C) or very high temperatures (suffix TT: - 25°C, + 85°C); please consult our Customer Care Centre.

Inductive proximity sensors

OsiSense XS Application

Factor 1 sensors for ferrous or non ferrous material detection and welding applications. Plastic case, 40 x 40 mm front face. 5 position turret head

Setting-up (continued)

Minimum mounting distances (mm)

	Side by side	Face to face	Facing a metal object
Sensors flush mountable in metal	$e \geq 80$	$e \geq 200$	$e \geq 60$

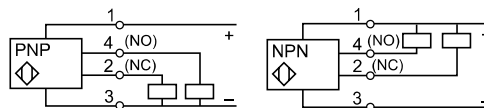
Wiring schemes

M12 connector

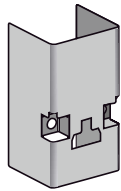


- 1: + V
- 2: NC Output
- 3: 0 V
- 4: NO Output

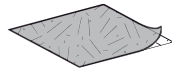
4-wire --, NO + NC outputs



Accessories



XSZPSC2



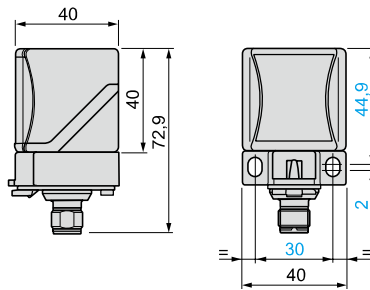
XSZPKC2

Description	Use for	Reference	Weight kg
Stainless steel rigid protective cover (only suitable for use when detecting from the top)	Welding	XSZPSC2	0.010
Protective sheet (for sensing face of sensor)	Welding	XSZPKC2	0.010

Sold in lots of 5

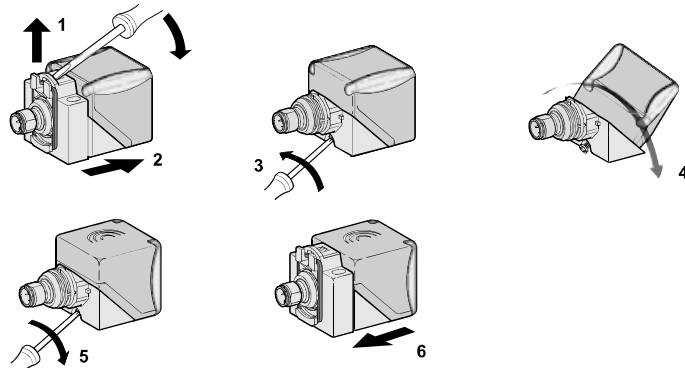
Dimensions

XS9C2A1PCM12 and XS9C2A1NCM12

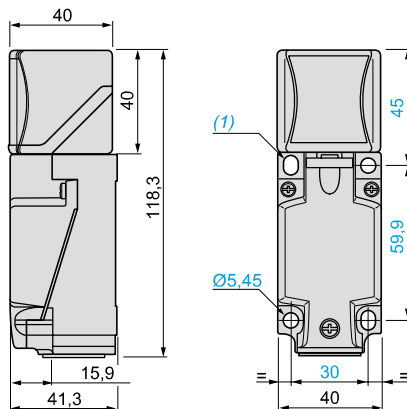


Head positions

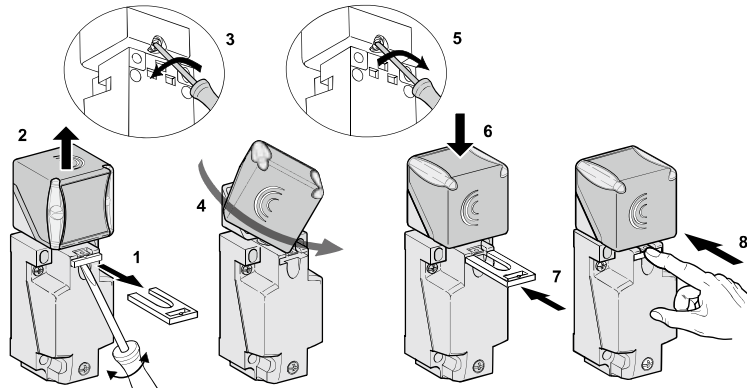
XS9C2A1PCM12 and XS9C2A1NCM12



XS9C4A1PCP20 and XS9C4A1NCP20



XS9C4A1PCP20 and XS9C4A1NCP20



(1) 2 elongated holes $\varnothing 5.3 \times 7$ mm.

Tightening torque of cover fixing screws and clamp screws: < 1.2 N.m / < 10.62 lb-in.