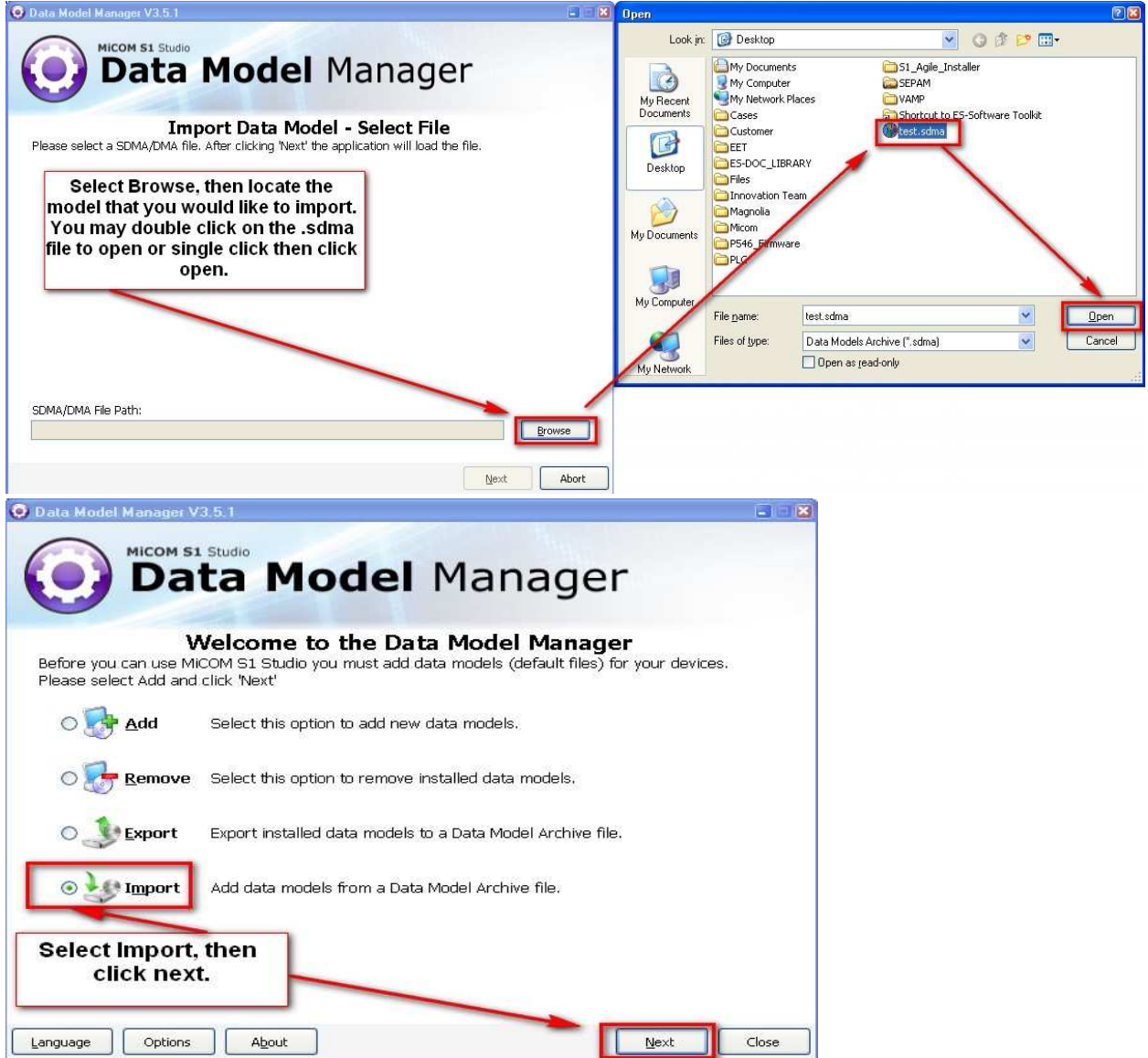
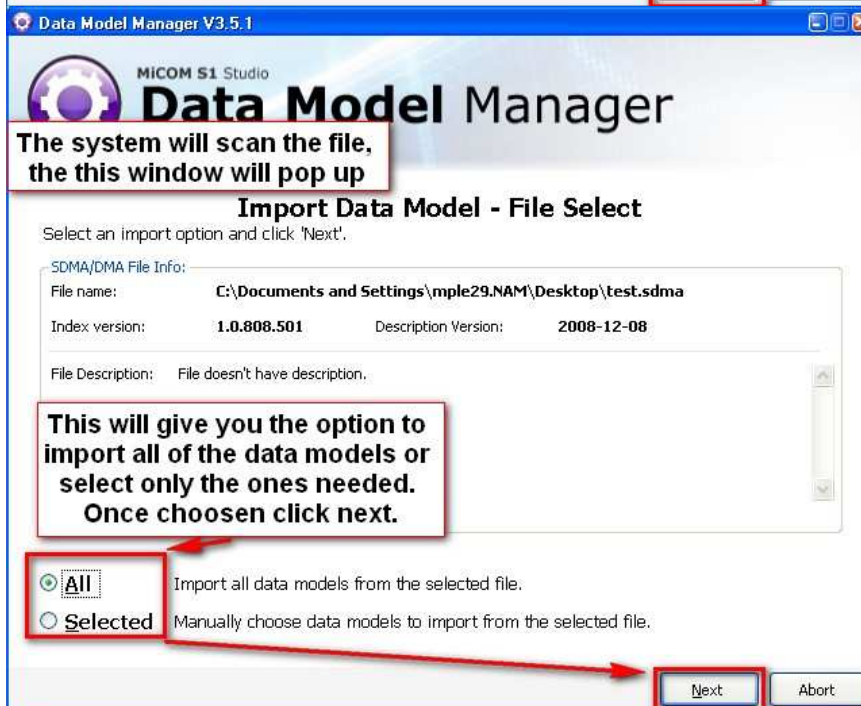
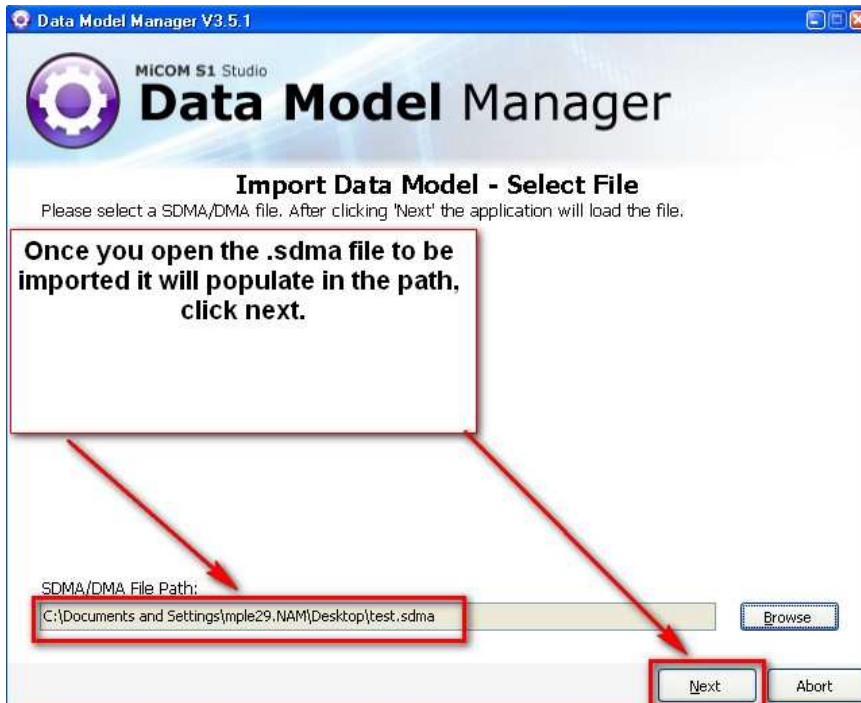


## How to Import a Data Model

Open the Data Model Manager

- a. Start > All Programs > Schneider Electric > Micom S1 Studio > Data Model Manager
- b. Follow the screen shots below:





Data Model Manager V3.5.1

MICOM S1 Studio  
**Data Model Manager**

### Import all Data Models - Confirm Import

These are the data models which will be imported from the SDMA/DMA file. Click 'Import' to start data model import. This operation may take a few minutes.

Selected models:

Model	Supplier	Language	Description
#P343	Legacy	en	Generator Prot. with Differential

**This window displays the models that will be imported, confirm then click import**

Back Import Abort

Data Model Manager V3.5.1

MICOM S1 Studio  
**Data Model Manager**

**This is a status window, once the installation is complete, click OK**

Operations log:

- 07:42:35.960 Downloading data models.
- 07:42:35.960 Downloading 213 model files.
- 07:42:53.662 The download completed successfully.
- 07:42:53.662 Installing data models.
- 07:42:53.662 Installing 213 model files.
- 07:43:23.756 Install completed successfully.
- 07:43:23.756 Updating index data.
- 07:43:23.756 Updating 213 records.
- 07:43:23.990 Update completed successfully.
- 07:43:24.006 Installation finished.

Autoscroll

Status  
Ready.

Back OK

