



IP Camera / DVR / NVS / Snapshot Queries

SNAPSHOTS

Ness Ultimate DVR



Camera Number	URL
1	http://IP_ADDRESS/snapshot.get?channel=1
2	http://IP_ADDRESS/snapshot.get?channel=2
3	http://IP_ADDRESS/snapshot.get?channel=3
4	http://IP_ADDRESS/snapshot.get?channel=4
5	http://IP_ADDRESS/snapshot.get?channel=5
6	http://IP_ADDRESS/snapshot.get?channel=6
7	http://IP_ADDRESS/snapshot.get?channel=7
8	http://IP_ADDRESS/snapshot.get?channel=8
9	http://IP_ADDRESS/snapshot.get?channel=9
10	http://IP_ADDRESS/snapshot.get?channel=10
11	http://IP_ADDRESS/snapshot.get?channel=11
12	http://IP_ADDRESS/snapshot.get?channel=12
13	http://IP_ADDRESS/snapshot.get?channel=13
14	http://IP_ADDRESS/snapshot.get?channel=14
15	http://IP_ADDRESS/snapshot.get?channel=15
16	http://IP_ADDRESS/snapshot.get?channel=16

Ness Single Channel video server



URL

http://IP_ADDRESS/image.jpg?

Pixord 4 Channel Video Server



(Video Size: 176 x 144)

Camera Number	URL
1	http://IP_ADDRESS/images1qsif?
2	http://IP_ADDRESS/images2qsif?
3	http://IP_ADDRESS/images3qsif?
4	http://IP_ADDRESS/images4qsif?

(Video Size: 352 x 288) - *Recommend to use*

Camera Number	URL
1	http://IP_ADDRESS/images1sif?
2	http://IP_ADDRESS/images2sif?
3	http://IP_ADDRESS/images3sif?
4	http://IP_ADDRESS/images4sif?

(Video Size: 704 x 576)

Camera Number	URL
1	http://IP_ADDRESS/images1full?
2	http://IP_ADDRESS/images2full?
3	http://IP_ADDRESS/images3full?
4	http://IP_ADDRESS/images4full?

Ness HD-SDI DVR



Camera Number	URL
1	http://IP_ADDRESS/snapshot.get?channel=1
2	http://IP_ADDRESS/snapshot.get?channel=2
3	http://IP_ADDRESS/snapshot.get?channel=3
4	http://IP_ADDRESS/snapshot.get?channel=4

Ness NIP Series IP Cameras (including Ness NIP PTZ Camera)



URL

http://IP_ADDRESS/cgi-bin/jpg/image.cgi?

Ness AutoIP NVS



Before these camera snapshots work, you need to enable the snapshot / port forwarding in the NVS GUI. Please refer to 'How to get up NVS to get snapshots' on how to set up this function.

Camera Number	URL
1	http://IP_ADDRESS:81/cgi-bin/jpg/image.cgi?
2	http://IP_ADDRESS:82/cgi-bin/jpg/image.cgi?
3	http://IP_ADDRESS:83/cgi-bin/jpg/image.cgi?
4	http://IP_ADDRESS:84/cgi-bin/jpg/image.cgi?
5	http://IP_ADDRESS:85/cgi-bin/jpg/image.cgi?
6	http://IP_ADDRESS:86/cgi-bin/jpg/image.cgi?
7	http://IP_ADDRESS:87/cgi-bin/jpg/image.cgi?
8	http://IP_ADDRESS:88/cgi-bin/jpg/image.cgi?



These commands will only work if you are connecting directly to the PTZ camera (NIP-700PTZ).



Replace the red number below with a higher number and it will move faster. Recommended to use a number between 15 and 25.

Move Up

http://<IP_ADDRESS>/cgi-bin/com/ptz.cgi?continuouspaniltmove=0,15

Move Down

http://<IP_ADDRESS>/cgi-bin/com/ptz.cgi?continuouspaniltmove=0,-15

Move Right

http://<IP_ADDRESS>/cgi-bin/com/ptz.cgi?continuouspaniltmove=15,0

Move Left

http://<IP_ADDRESS>/cgi-bin/com/ptz.cgi?continuouspaniltmove=-15,0

Stop Moving

http://<IP_ADDRESS>/cgi-bin/com/ptz.cgi?continuouspaniltmove=0,0

Zoom In

http://<IP_ADDRESS>/cgi-bin/com/ptz.cgi?zoom=9999

Zoom Out

http://<IP_ADDRESS>/cgi-bin/com/ptz.cgi?zoom=0

HOW TO SET UP NVS TO GET SNAPSHOTS

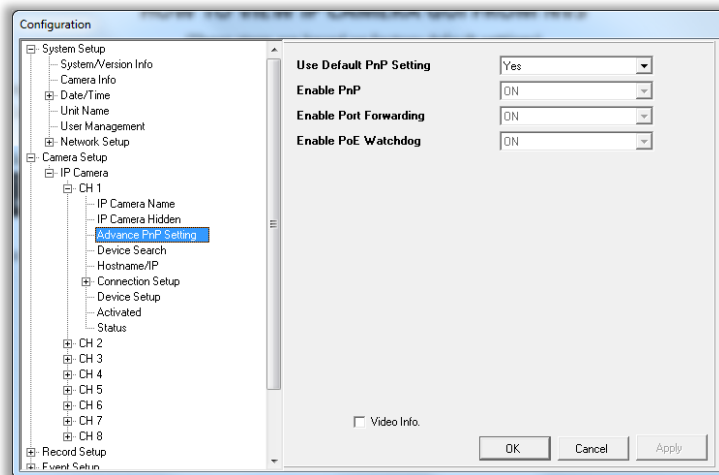
i These steps are based on factory default settings in both NVS and IP camera.

Login to the NVS web GUI
(Confirm there is a video feed on the camera channel)

Click on the Menu button



Go to Camera Setup > IP Camera > [channel number] > Advance PnP Settings



Set the following Settings:

Use Default PnP Settings: **NO**
Enable PnP: **ON**
Enable Port Forwarding: **ON**
Enable PoE Watchdog: **ON**

Then click on **Apply**
Then click on **OK**

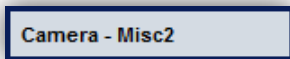
Now in the URL field in your browser type in your NVS IP address followed by: **8[channel number]**
For Example: If your NVS IP address is 192.168.0.217 and you changed the setting for Channel 1 then you would enter in: **192.168.0.217:81** as the browsers URL.

When prompted enter the Username and password for the camera
(Default: Username=Aadmin Password=1234)

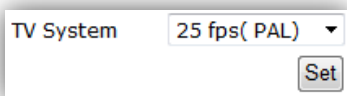
Then click on the **PTZ** tap in the menu. (In the camera GUI browser)



Now select **Camera – Misc2** from the menu on the left



Make sure the **TV System** is set to **25 fps (PAL)** and click **Set**
(You may need to reboot the camera when prompted to do so)

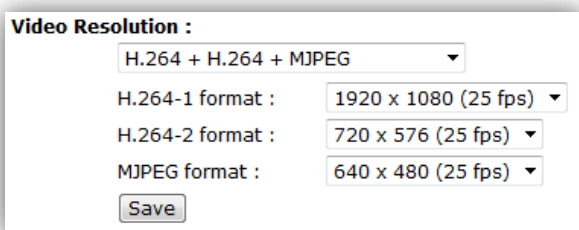


Then click on the **streaming** tap in the menu



Change the video Resolution to **H.264 + H.264 + MJPEG**

- H.264-1 Format: 1920 x 1080 (25 fps)
- H.264-2 Format: 720 x 576 (25 fps)
- MJPEG Format: 640 x 480 (25 fps)



Then click on the **Save** button and close the **camera browser**.