



by **Schneider** Electric

Push Controls

Module: Fibaro

Version 1.0

www.pushcontrols.com.au

© Copyright 2015 Push Controls by Schneider Electric

Contents

Importing the Fibaro Module	3
Configuring the Fibaro Module.....	4
Setting Sever IP Address	4
Settings User Credentials.....	5
Adding GUI Content	6

Importing the Fibaro Module

Import the Fibaro module by completing the following actions:

1. Right click on 'PROJECT' at the top of the tree and select 'Import Module'. *Refer to Figure 1*
2. Locate and select 'Fibaro_X.pemod' (where X is the current version number)
3. Select **Open**
4. The selected module will now appear in the **Module Browser** window, where you can view all **Imported Modules**, expand to see the contents of these modules.

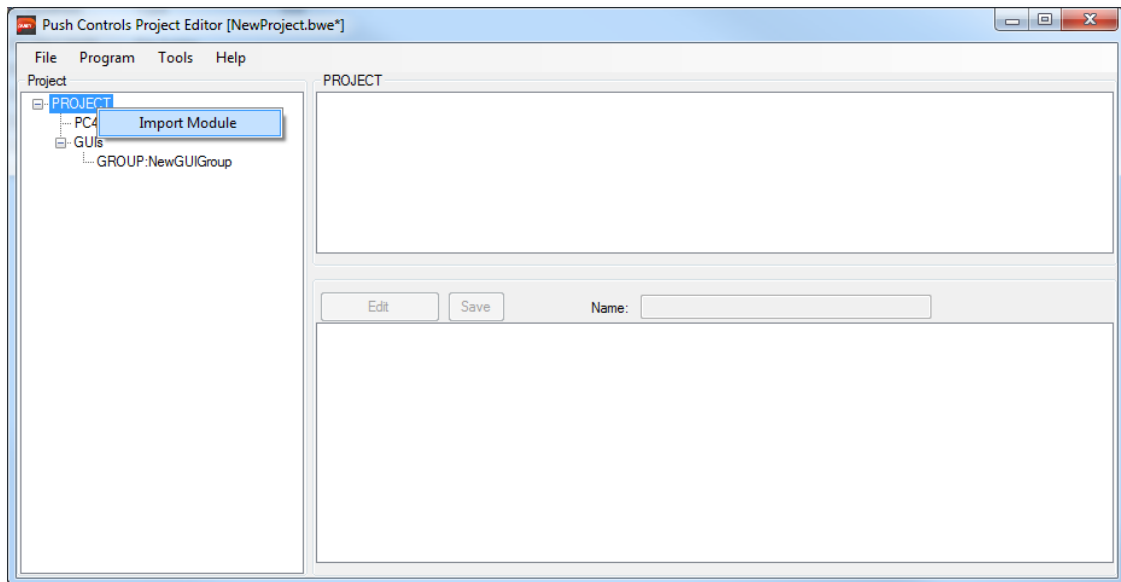


Figure 1 – Right click on PROJECT, inside the project tree, to import a module.

The selected module will now appear in the module browser window (See Figure 2), where you can see everything that is included in the module.

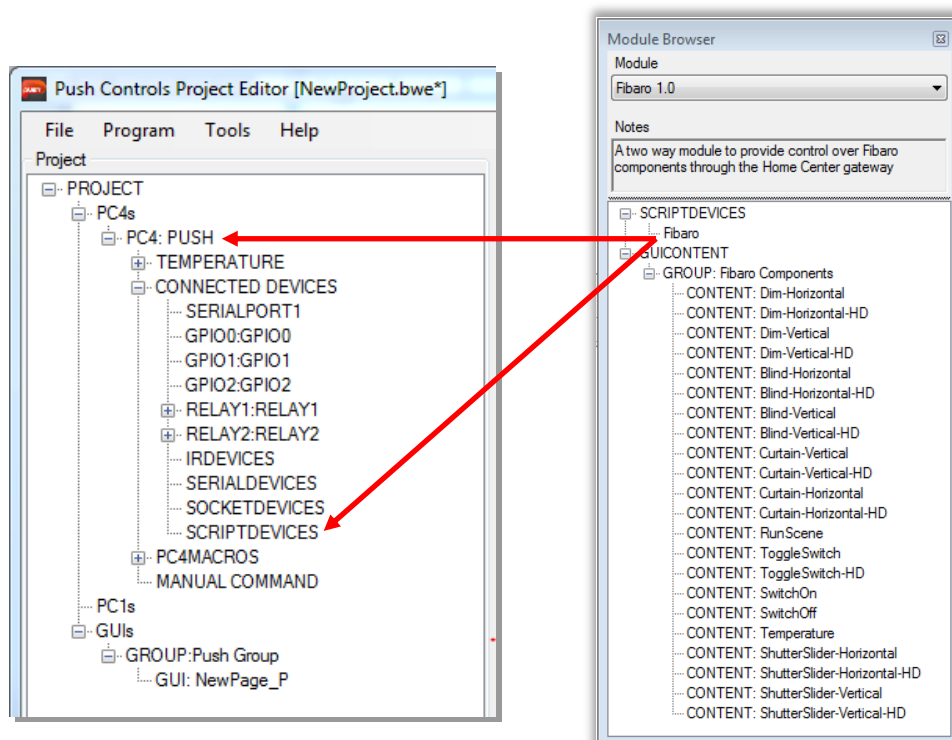


Figure 2 – Dragging and dropping the script from the Module Browser window

Configuring the Fibaro Module

The Fibaro requires minimal configuration, which is specific to establishing communication between the Push system and the Fibaro Home Center 2 on the network. The process of configuring the Fibaro module is conducted through the properties of the Fibaro SCRIPT DEVICE and is outlined in the following section.

Setting Sever IP Address

To configure the Fibaro SCRIPT DEVICE we need to enter the Fibaro Home Center 2 Server IP address within the User Settings tab. To complete this process follow the steps below:

1. Right click on the Fibaro SCRIPT DEVICE and select properties

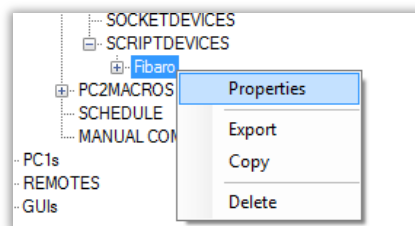


Figure 3 - Right click on the Fibaro SCRIPT DEVICE and select properties

2. Click on the User Settings tab
3. Change the Server IP to match the IP address of the Fibaro Home Center 2 (ensure you have surrounded the IP address in double quotation marks as seen below, if the format is correct you should see the message Settings Object Parse OK)

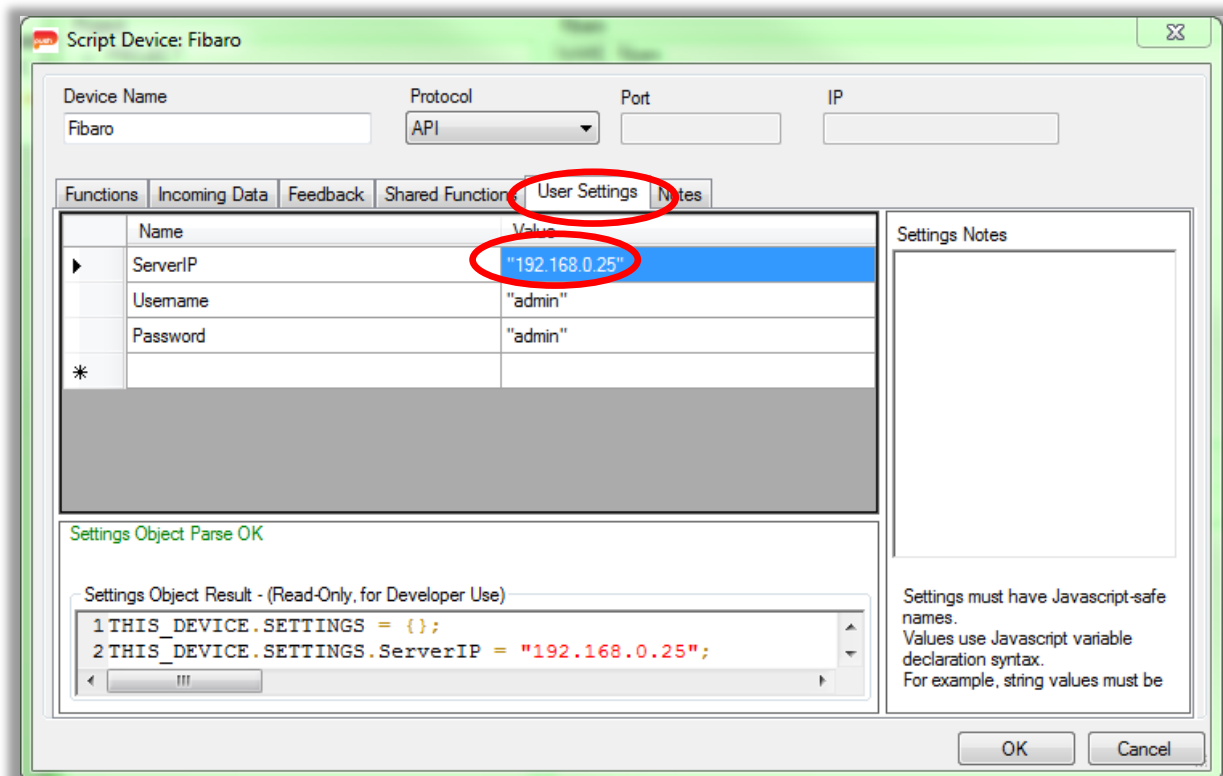


Figure 4 - Highlighting the User Settings tab and ServerIP variable

Settings User Credentials

All requests between the Push system and the Fibaro gateway must be authenticated using the gateway username and password. These credentials are entered through the user settings tab, to achieve this follow the steps below.

1. Right click on the Fibaro SCRIPT DEVICE and select properties

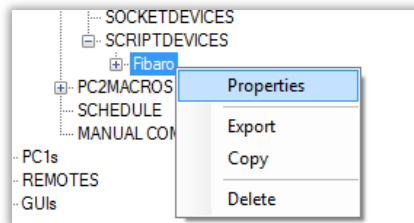


Figure 5 - Right click on the Fibaro SCRIPT DEVICE and select properties

2. Click on the User Settings tab
3. Change the Server IP to match the IP address of the Fibaro Home Center 2 (ensure you have surrounded the IP address in double quotation marks as seen below, if the format is correct you should see the message Settings Object Parse OK)

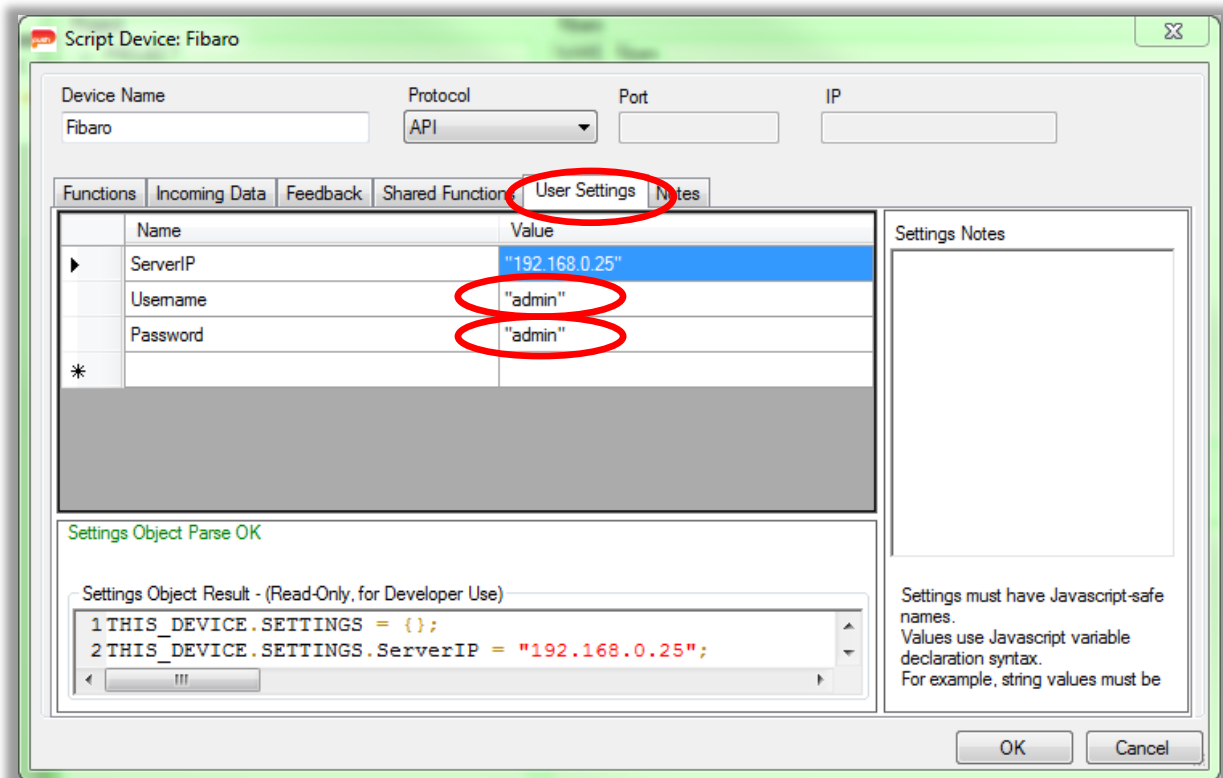


Figure 6 - Highlighting the User Settings tab and username and password variables

Adding GUI Content

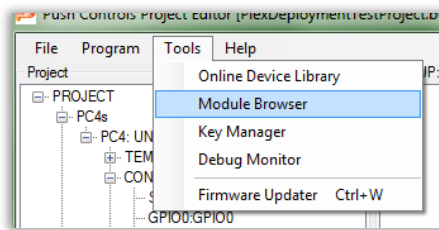
The Fibaro module contains a number of GUI elements for both tablets and phones. The following sections outline the process of importing and programming these GUI components.

The Fibaro module contains a number of GUI elements that correspond to various Fibaro components:

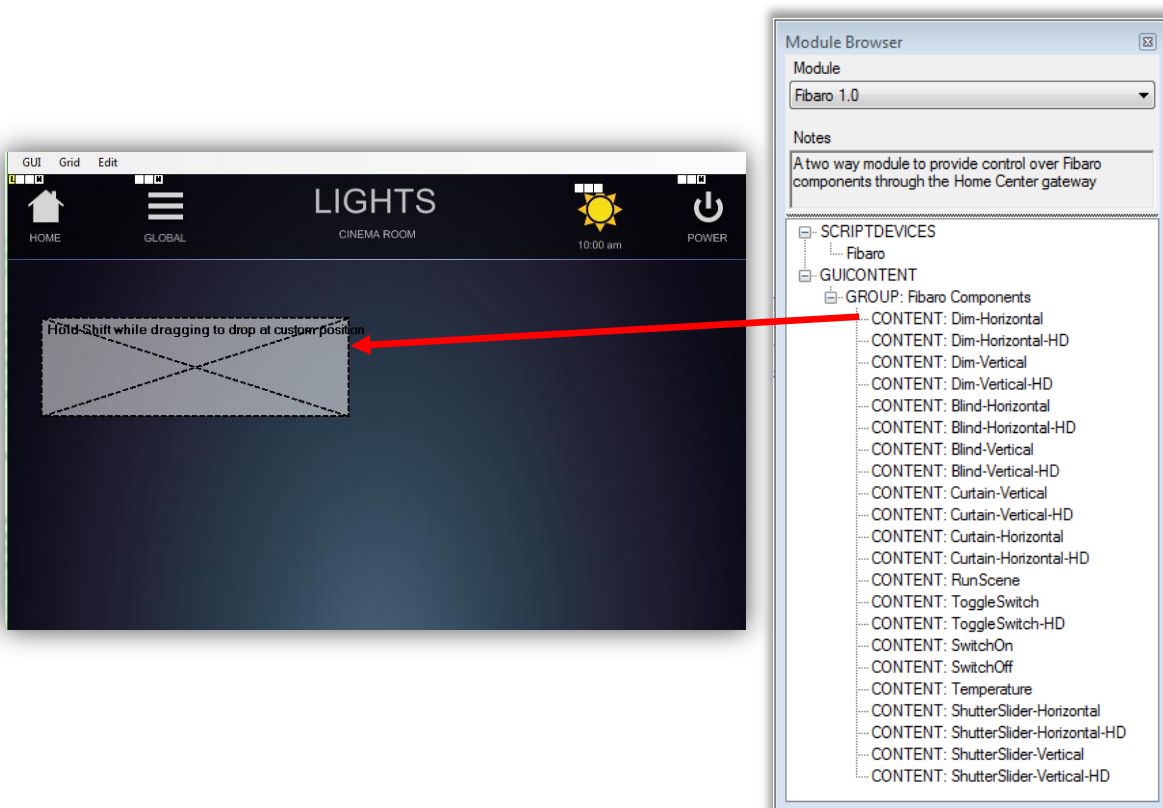
1. **Dim-Horizontal:** A horizontal toggle button and slider to control a Fibaro dimming module. This component is tailored for tablet interfaces.
2. **Dim-Horizontal-HD:** A horizontal toggle button and slider to control a Fibaro dimming module. This component is tailored for phone interfaces.
3. **Dim-Vertical:** A vertical toggle button and slider to control a Fibaro dimming module. This component is tailored for tablet interfaces.
4. **Dim-Vertical-HD:** A vertical toggle button and slider to control a Fibaro dimming module. This component is tailored for phone interfaces.
5. **Blind-Horizontal & Curtain-Horizontal:** A horizontal up/down/stop GUI component to control a Fibaro shutter module. This component is tailored towards tablet interfaces.
6. **Blind-Horizontal-HD & Curtain-Horizontal-HD:** A horizontal up/down/stop GUI component to control a Fibaro shutter module. This component is tailored for phone interfaces.
7. **Blind-Vertical & Curtain-Vertical:** A vertical up/down/stop GUI component to control a Fibaro shutter module. This component is tailored for tablet interfaces.
8. **Blind-Vertical-HD & Curtain-Vertical-HD:** A vertical up/down/stop GUI component to control a Fibaro shutter module. This component is tailored towards phone interfaces.
9. **RunScene:** a regular button to trigger a scene to run on the Fibaro Home Center
10. **ToggleSwitch:** a toggle button to allow triggering of a Fibaro relay module. This component is optimised for tablet interfaces.
11. **ToggleSwitch-HD:** a toggle button to allow triggering of a Fibaro relay module. This component is optimised for phone interfaces.
12. **SwitchOn:** a regular button to turn on a Fibaro relay component
13. **SwitchOff:** a regular button to turn off a Fibaro relay component
14. **Temperature:** a dynamic label component to display the current temperature reading from a Fibaro sensor
15. **ShutterSlider-Horizontal:** A horizontal slider to control a Fibaro shutter module. This component is tailored for tablet interfaces.
16. **ShutterSlider-Horizontal-HD:** A horizontal slider to control a Fibaro shutter module. This component is tailored for phone interfaces.
17. **ShutterSlider-Vertical:** A vertical slider to control a Fibaro shutter module. This component is tailored for tablet interfaces.
18. **ShutterSlider-Vertical-HD:** A vertical slider to control a Fibaro shutter module. This component is tailored for phone interfaces.

The process of importing each GUI component is identical, to add a Fibaro GUI component follow the steps below:

1. Open the module browser (Tools->Module Browser) and select the Fibaro module



2. Expand GUICONTENT->GROUP: Fibaro Components
3. Open the page you wish to import the Fibaro into by right clicking and selecting 'Edit' or double clicking on the page name
4. With both the open GUI page and Module Browser in view drag and drop the Fibaro component into the open GUI page and you will see a grey box with a black cross through the middle, hold down shift to reposition this placeholder to the location you wish to add the panel and release your mouse button.
 - a. NOTE: If you are placing the panel over the top of existing GUI elements you will be prompted to choose if you wish to remove the GUI elements beneath the panel or add it over the top: Choose 'Yes' to remove existing elements or 'No' to add the panel on top of the existing elements.



5. Once you release your mouse button you will be prompted to enter the following two parameters:
 - a. **Label Name:** The name you wish to assign to the label of this Fibaro GUI component
 - b. **Device ID:** The device ID of the Fibaro component to control

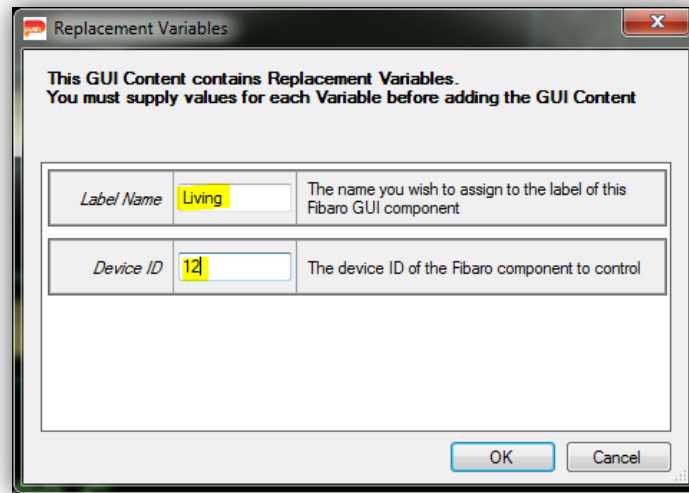


Figure 7 - Highlighting the Label Name and Device ID parameters of a Fibaro GUI component