



by **Schneider** Electric

Push Controls

Module: Wiser Link

Version 1.0

www.pushcontrols.com.au

© Copyright 2016 Push by Schneider Electric

Contents

Importing the Wisser Link Module.....	3
Using the Wisser Link Module	5

Importing the Wiser Link Module

Import the Wiser Link module by completing the following actions:

- Right click on 'PROJECT' at the top of the tree and select 'Import Module'. *Refer to Figure 1*
- Locate and select 'Wiser Link_X.pemod' (where X is the current version number)

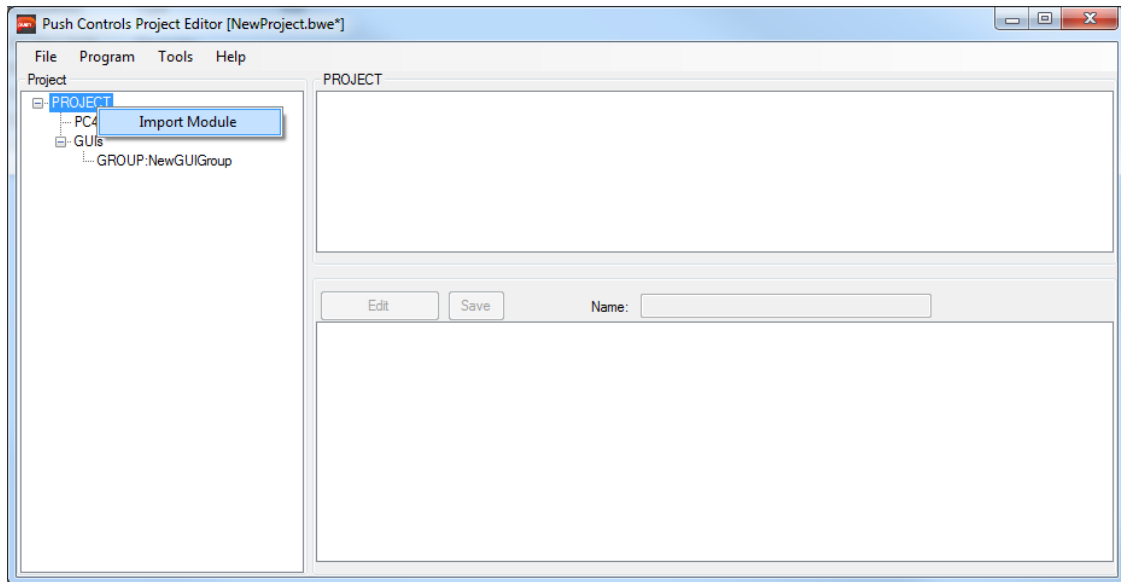


Figure 1 – Right click on PROJECT, inside the project tree, to import a module.

The selected module will now appear in the module browser window (See Figure 2), where you can see everything that is included in the module.

Note: A GUI group must be available in the GUI's section of the Project Editor, in order to import the Wiser Link module.

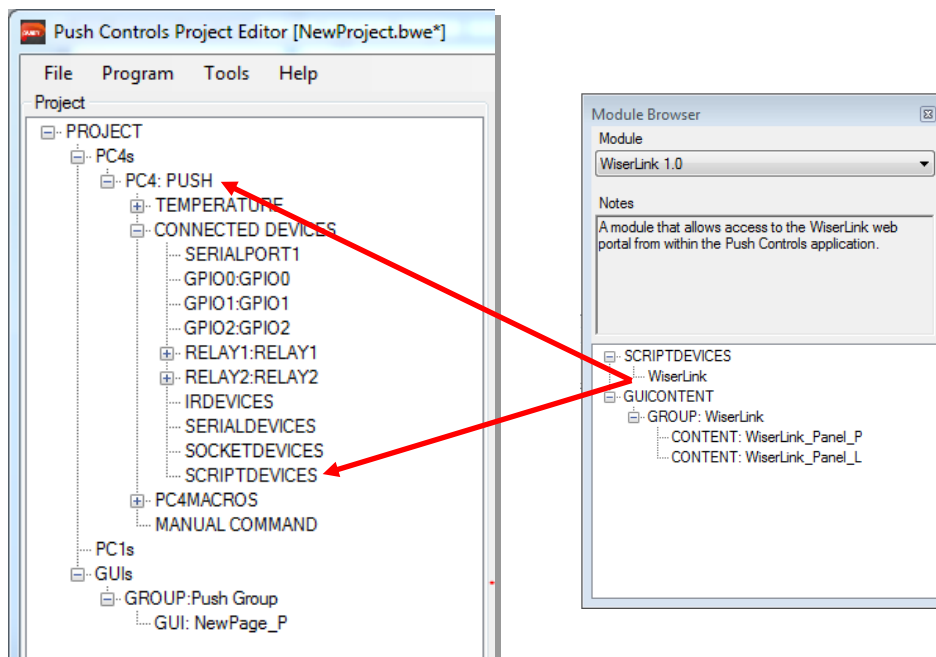
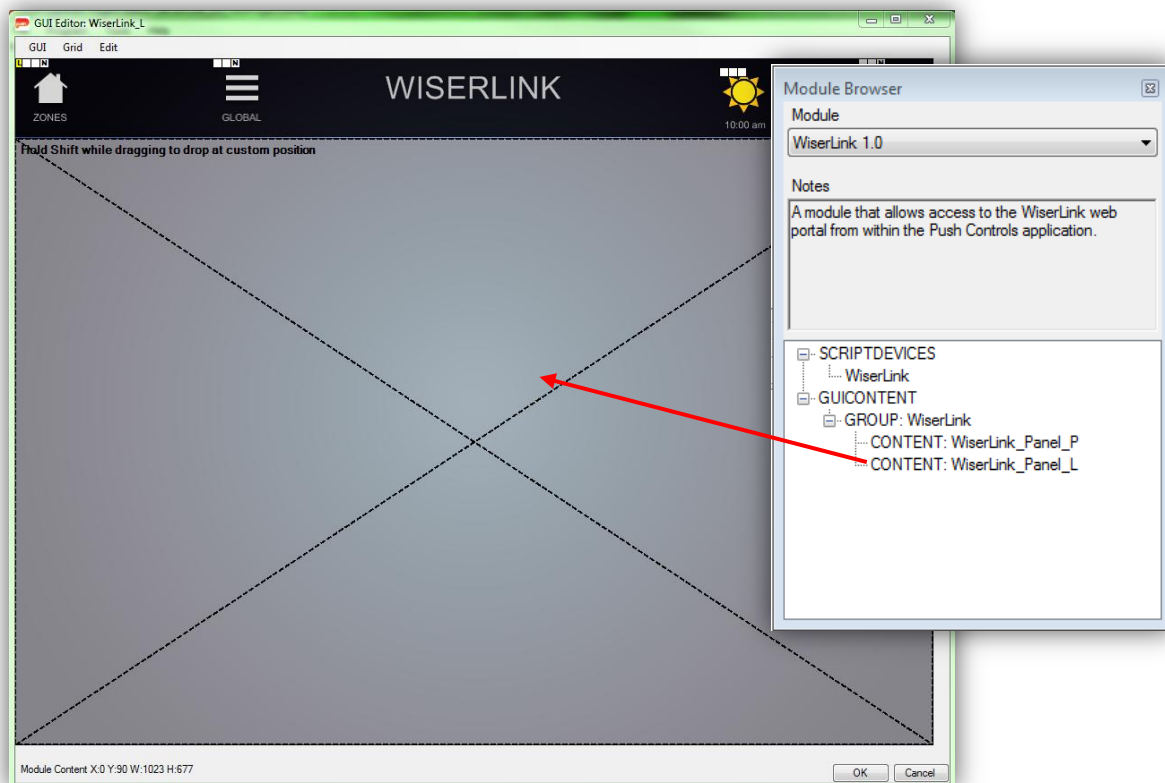


Figure 2 – Dragging and dropping the script from the Module Browser window

Each of the elements contained in the module need to be dragged and dropped into their respective positions within the project. The items under the SCRIPTDEVICES category need to be dragged onto the desired controller (See Figure 2). The GUICONTENT area of the Wiser Link module contains one type of component being a placeholder panel to add to the page, which comes in two formats Portrait denoted by ‘_P’ and Landscape denoted by ‘_L’. The screenshot below depicts the landscape panel being dragged onto a landscape page, which when loaded onto a smart device will display the Wiser Link web application.



Using the Wisier Link Module

Once the module is loaded onto the smart device you will be presented with a login screen, whereby you will enter the username and password of your Wisier Link account (see below). Note it is presumed that you have already set up a Wisier Link account and associated it with your Wisier Link hardware, if you have not please refer to the relevant Wisier Link documentation on setting up the Wisier Link system.



After a successful sign-in you will be presented with the Wisier Link dashboard, which from this point you can navigate the Wisier Link web application as you would through a regular web browser.

