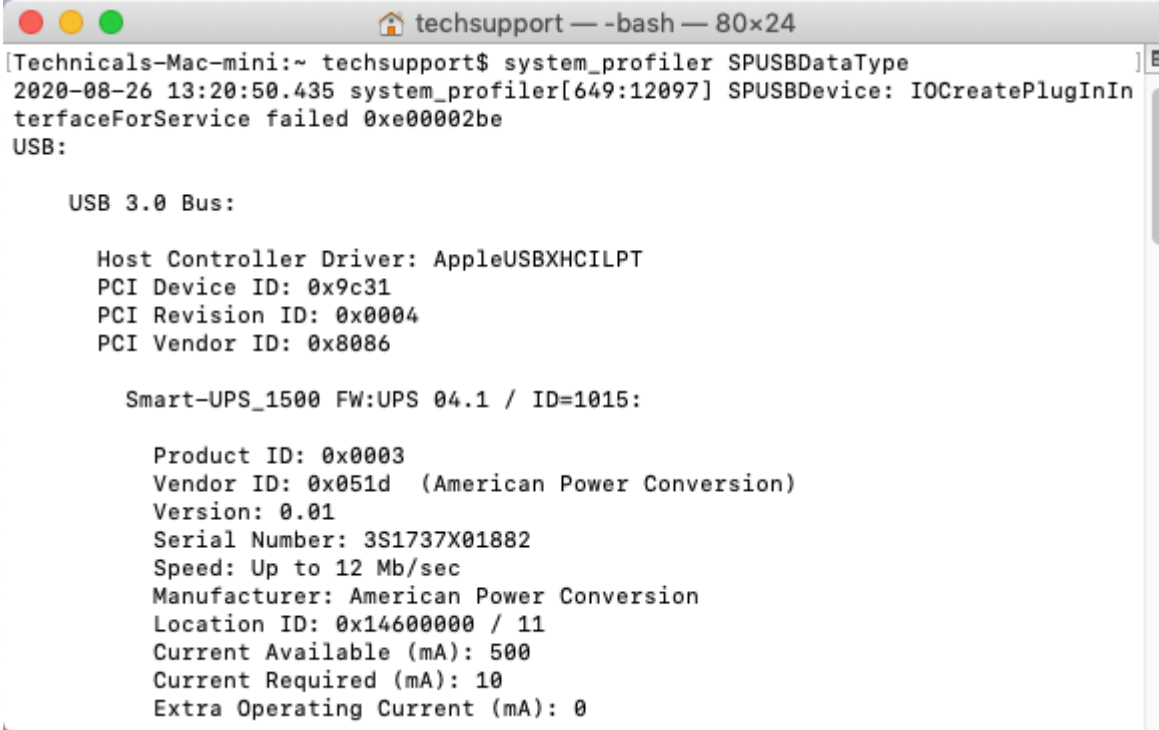


How to configure native shutdown on Macintosh OS X Big Sur communicating with Back-UPS or Smart-UPS

- 1 - Attached USB cable from Back-UPS or Smart-UPS to the computer.
- 2 – Verify the UPS is communicating with the OS.
- 3 - Select System preferences / Energy Saver / UPS Options
- 4 - Configure shutdown parameters.

To verify the UPS is communicating with the Mac
Open a terminal session and enter the command
System_profiler SPUSBDataType. You should see
The UPS listed as a USB device.

A screenshot of a macOS terminal window. The title bar shows 'techsupport — -bash — 80x24'. The terminal content shows the command 'system_profiler SPUSBDataType' being executed. The output includes a timestamp, a system profiler error message, and a detailed listing of a USB 3.0 Bus device. The device is identified as a Smart-UPS_1500 with various technical specifications.

```
techsupport@TechSupport-Mac-mini:~$ system_profiler SPUSBDataType
2020-08-26 13:20:50.435 system_profiler[649:12097] SPUSBDevice: IOCreatePlugInIn
terfaceForService failed 0xe00002be
USB:

  USB 3.0 Bus:

    Host Controller Driver: AppleUSBXHCILPT
    PCI Device ID: 0x9c31
    PCI Revision ID: 0x0004
    PCI Vendor ID: 0x8086

    Smart-UPS_1500 FW:UPS 04.1 / ID=1015:

      Product ID: 0x0003
      Vendor ID: 0x051d (American Power Conversion)
      Version: 0.01
      Serial Number: 3S1737X01882
      Speed: Up to 12 Mb/sec
      Manufacturer: American Power Conversion
      Location ID: 0x14600000 / 11
      Current Available (mA): 500
      Current Required (mA): 10
      Extra Operating Current (mA): 0
```

NOTE: according to Apple, Energy Saver options for UPS are not available on portable Macs e.g. MacBook, MacBook Air and MacBook Pro. See Apple discussion thread [8398176](https://discussions.apple.com/thread/8398176)

Overview Displays Storage Support Service



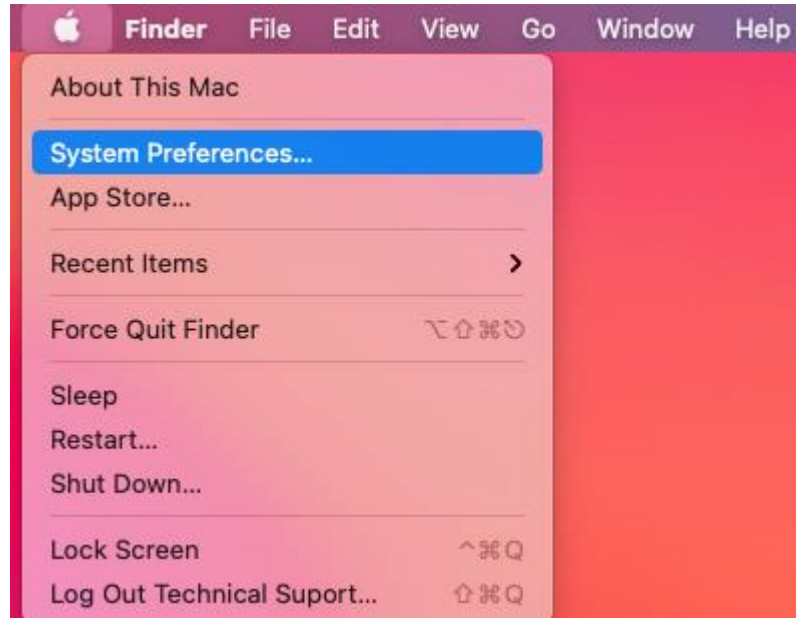
macOS Big Sur

Version 11.4

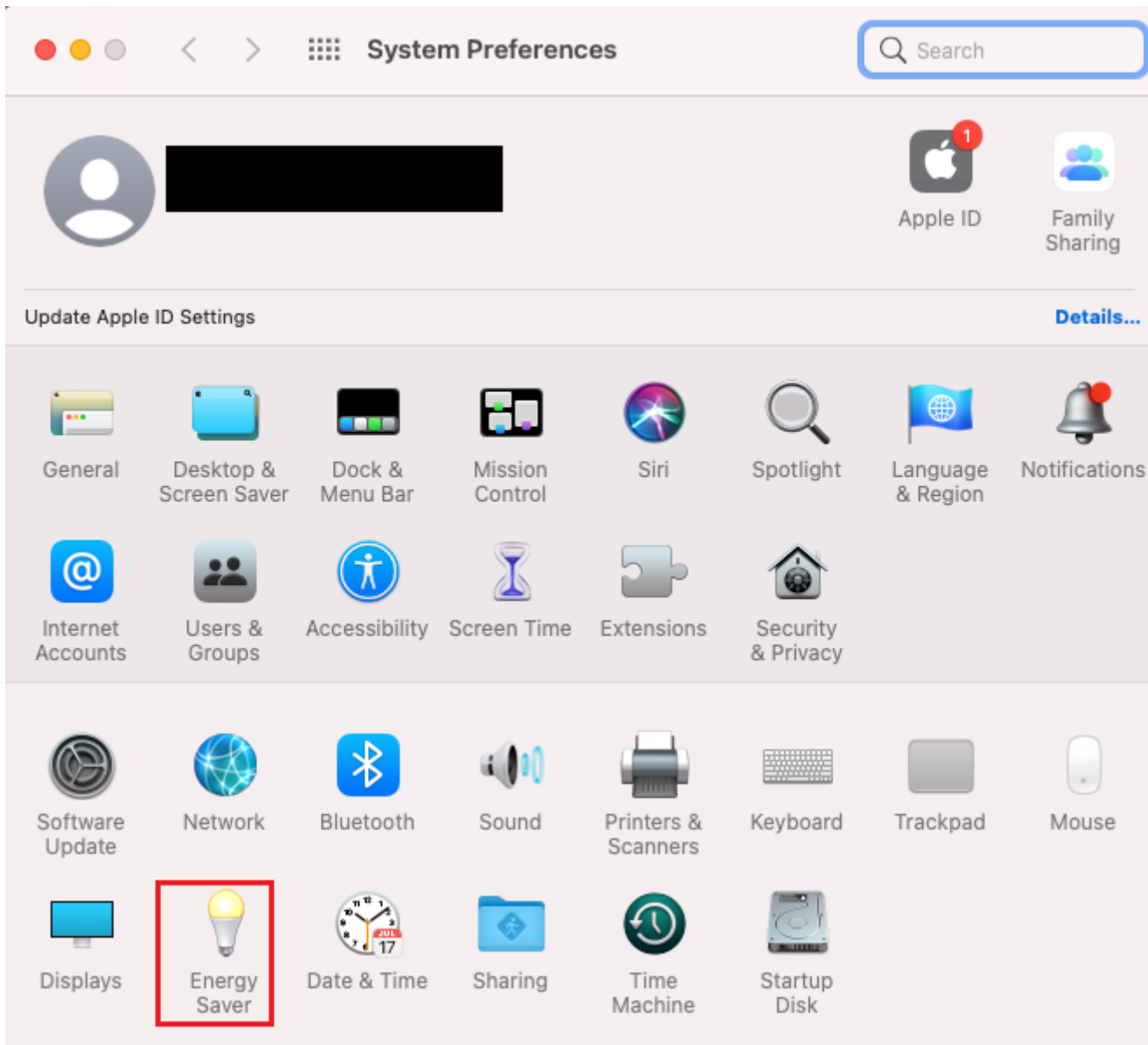
Mac mini (Late 2014)
Processor 1.4 GHz Dual-Core Intel Core i5
Memory 4 GB 1600 MHz DDR3
Startup Disk Big Sur
Graphics Intel HD Graphics 5000 1536 MB
Serial Number [REDACTED]

[System Report...](#) [Software Update...](#)

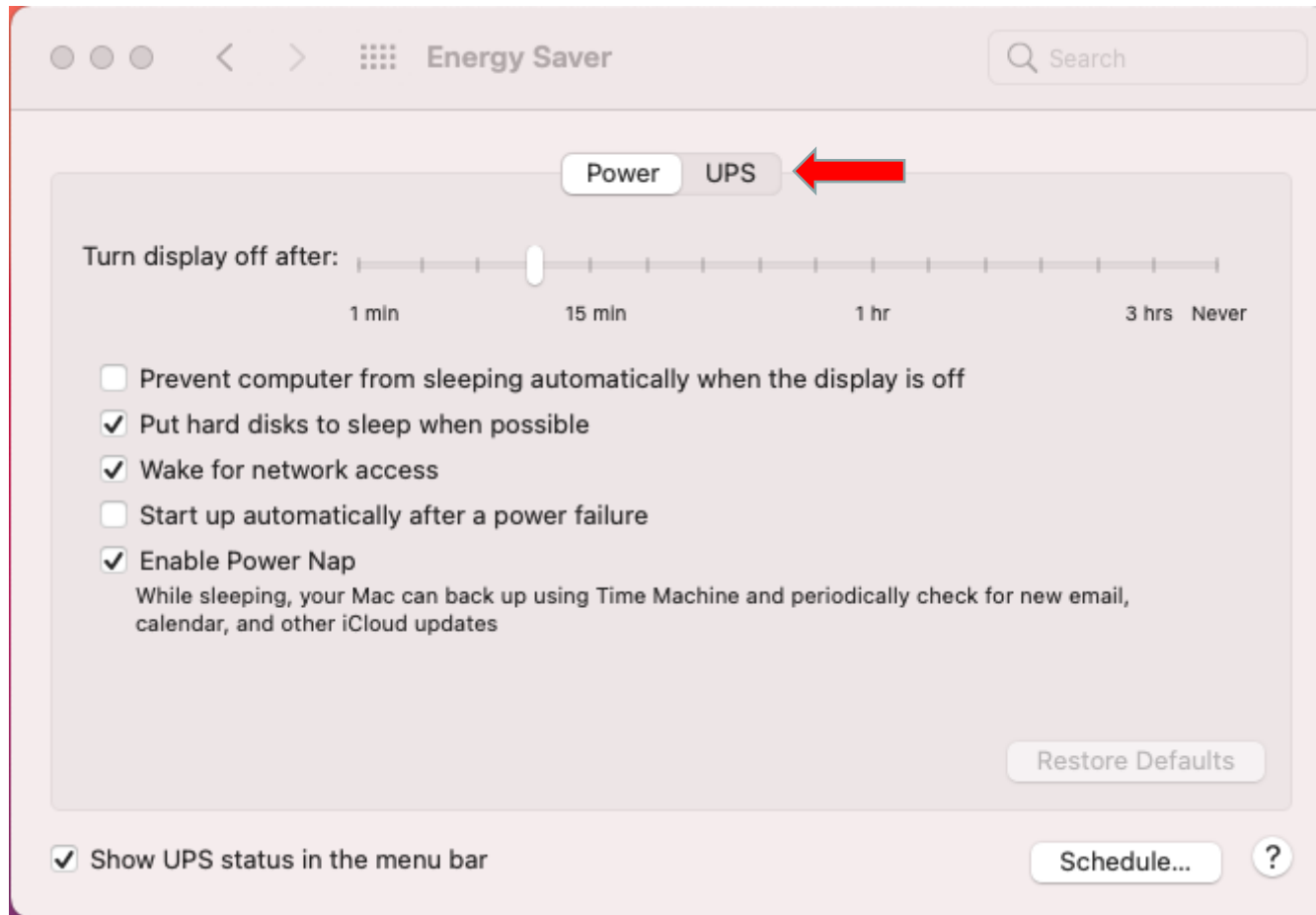
™ and © 1983-2021 Apple Inc. All Rights Reserved. License Agreement



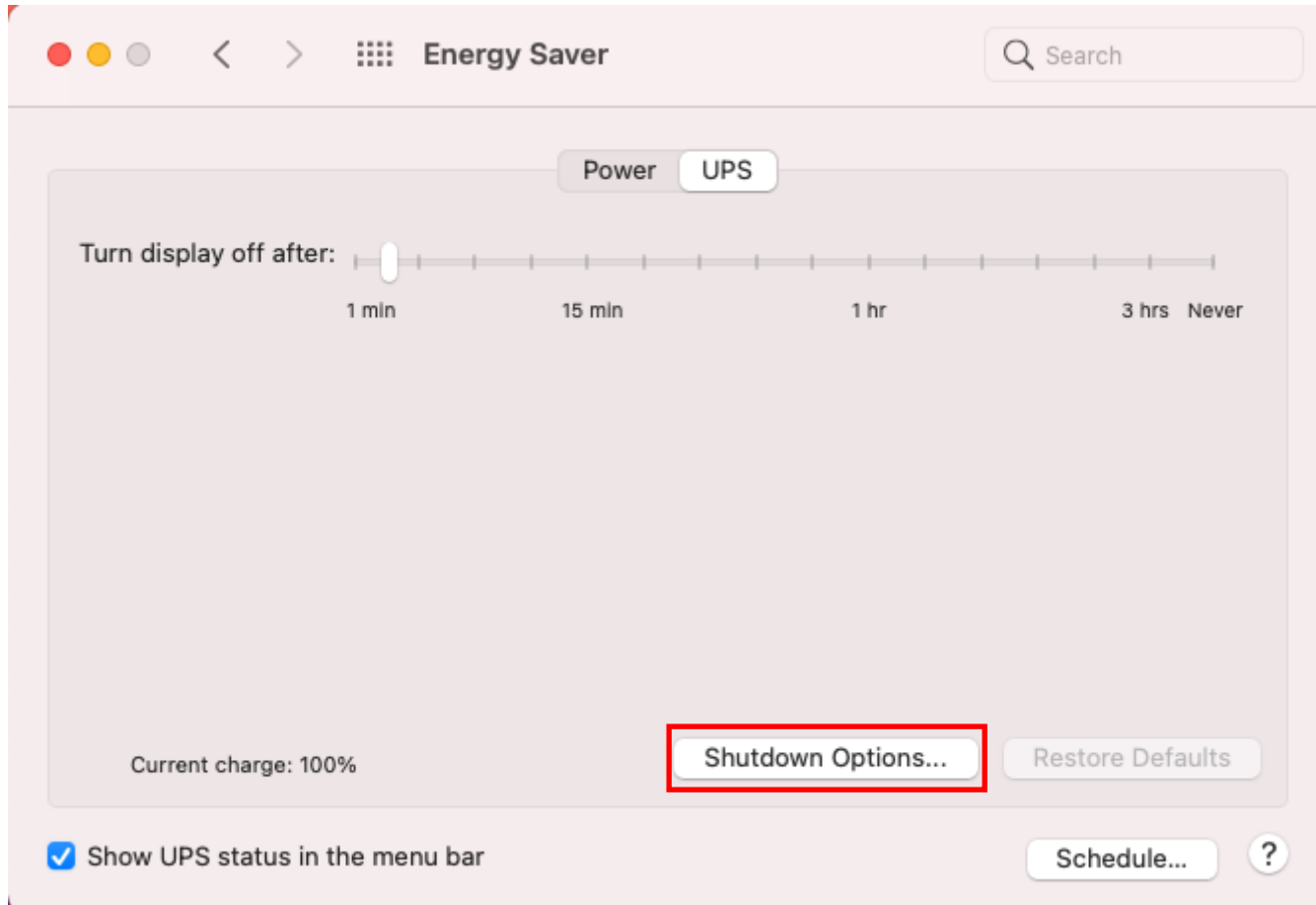
Open System Preferences



Click on Energy Saver

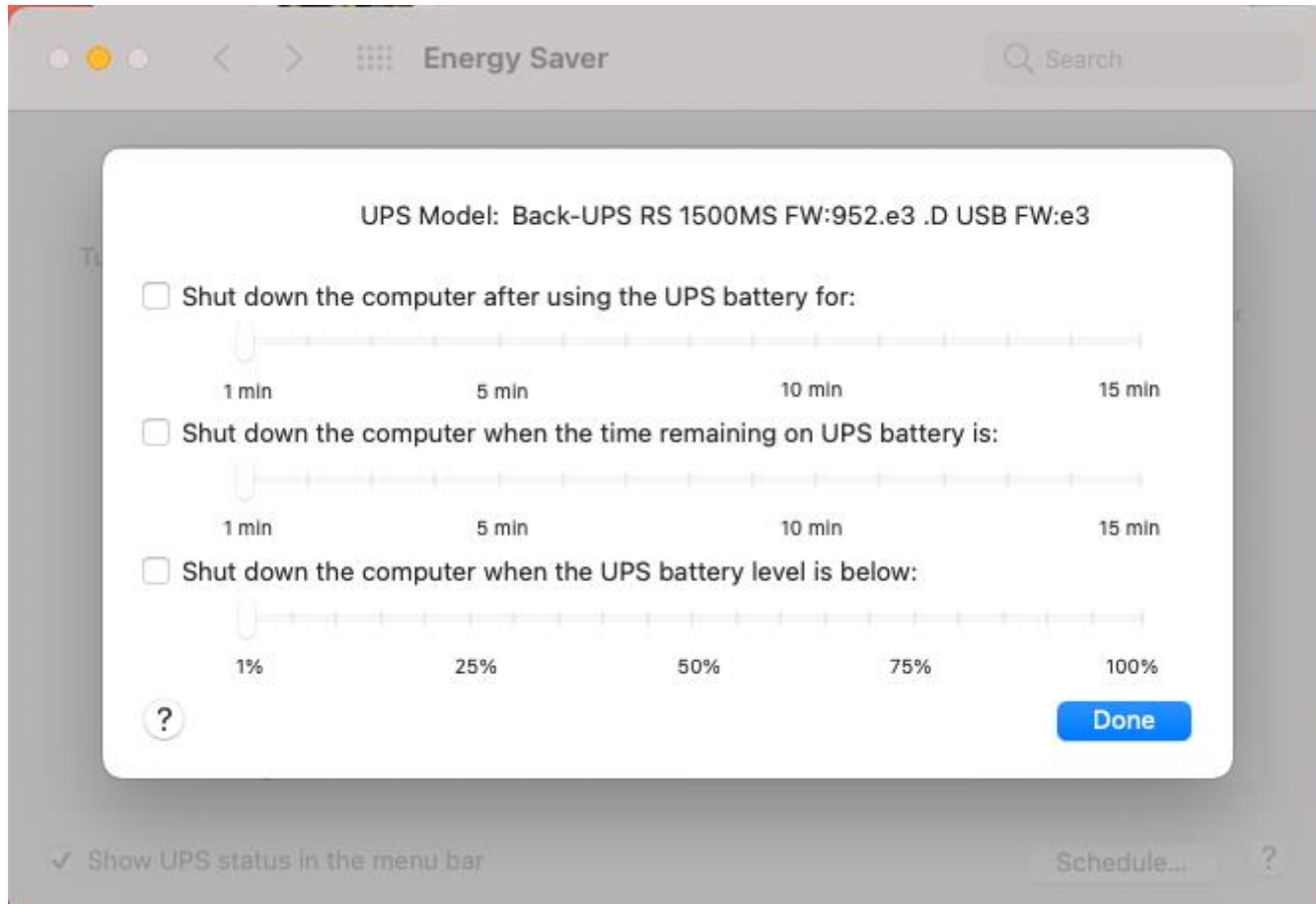


Click on UPS



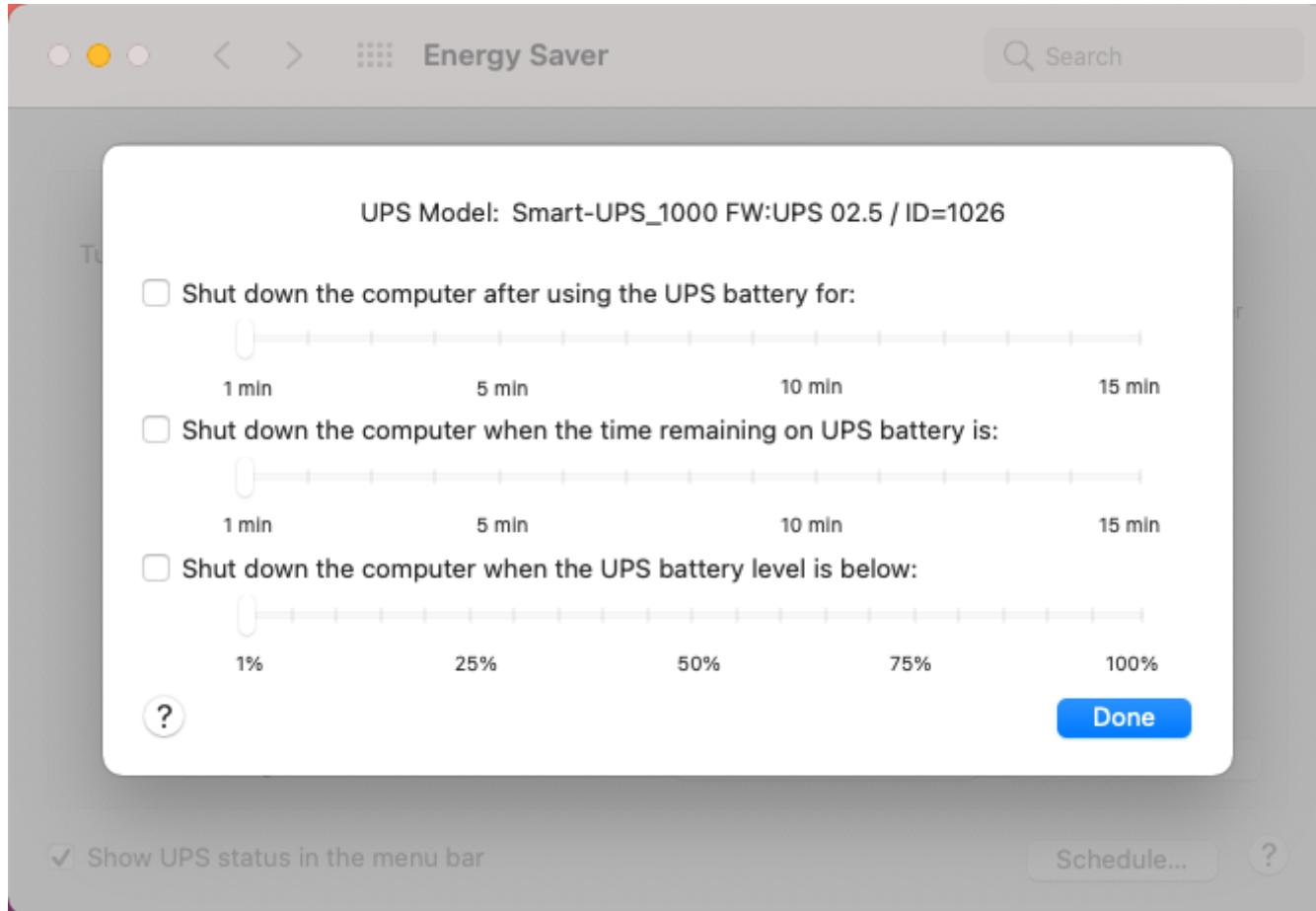
Click on Shutdown Options

Energy Saver options for Back-UPS



Enter desired shut down settings then click Done

Energy Saver options for Smart-UPS



Enter desired shut down settings then click Done