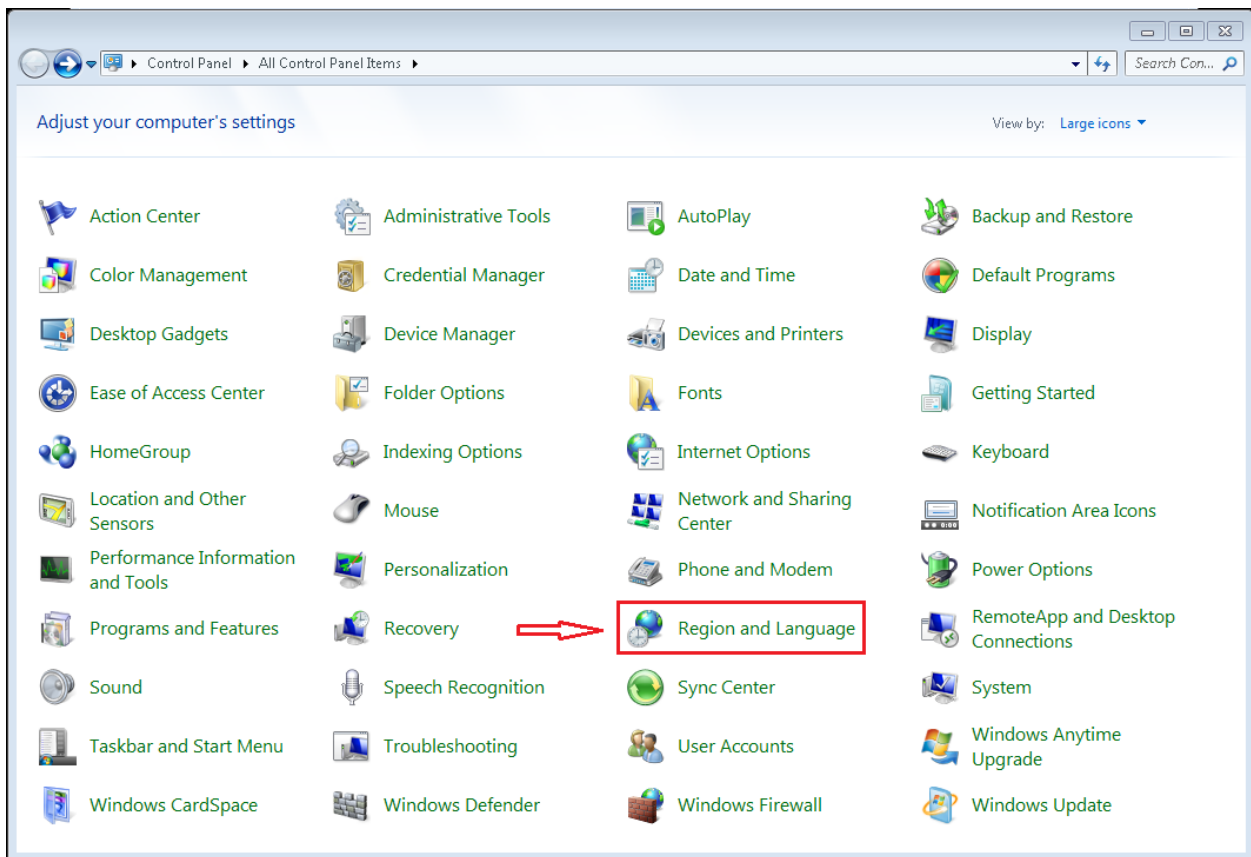


How to configure Windows 7 to allow PowerChute Personal Edition to recognize the French Language:

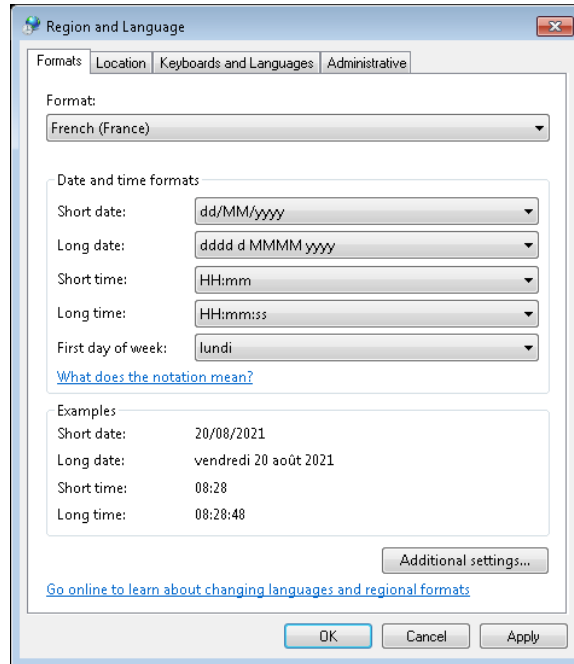
To install PowerChute Personal Edition for a non-English base OS, the OS must be set for the desired language before PowerChute being installed.

NOTE: To install the French version of PowerChute, the OS must be set to French - France. If the system is set to French - Canada, the program will run in English.

To change the system language settings, go to Control Panel, Region, and Language



Set format to French (France) and click apply to install the French version of PowerChute Personal Edition



Change Location to France and click apply

