

How to configure Microsoft Vista, Windows 7, 8, 10 and Windows Server 2008, 2012, 2016, 2019 to use Native UPS Shutdown Power Options

Microsoft Vista, Windows 7, 8, 10 and Server 2008, 2012, 2016, 2019 do not have native serial UPS shutdown. For a serial UPS, PowerChute Business Edition should be used. For any USB connected UPS, Windows does have some configuration for shutdown if you do not want to use the APC software. Once a USB UPS is connected, Windows adds configuration similar to that of a laptop with an on-board battery. Once this happens, you can set up power options in the same way as a laptop.

Power on the system. Connect the USB cable from the UPS to the system. The found new hardware will appear for about 10 seconds.



The needed HID drivers are preinstalled with the operating systems, but you can check the installation of the USB UPS by entering device manager.

Start > Control Panel> Device Manager

Once inside device manager, click the plus sign next to “Batteries” and also “Human Interface Devices” There should be a HID UPS Battery listing under “Batteries” and an American Power Conversion USB UPS listing under “Human Interface Devices”, both entries are necessary for the system to operate properly. If the HID UPS Battery entry is missing, verify that the UPS was made in the year 2000 or later. If the American Power Conversion USB UPS entry is missing, verify that the USB cable is connected direct to the computer and that the USB ports are enabled on the system.



Recycle Bin



Network



Desktop apps



This PC

All Control Panel Items

Control Panel > All Control Panel Items

File Edit View

Adjust your con

Administrative Tools

Color Management

Device Manager

File History

Java

Phone and Modem

Recovery

Sound

System

Windows Firewall

Device Manager

File Action View Help

TSLAB-L6

- Audio inputs and outputs
- Batteries
- HID UPS Battery
- Computer
- Disk drives
- Display adapters
- DVD/CD-ROM drives
- Human Interface Devices
 - American Power Conversion USB UPS
 - HID-compliant consumer control device
 - HID-compliant consumer control device
 - HID-compliant system controller
 - USB Input Device
 - USB Input Device
 - USB Input Device
- IDE ATA/ATAPI controllers
- Keyboards
- Mice and other pointing devices
- Monitors
- Network adapters
- Portable Devices
- Ports (COM & LPT)
- Print queues
- Printers

HID UPS Battery Properties

General Driver Details Events Power Management

HID UPS Battery

Device type: Batteries

Manufacturer: Microsoft

Location: on American Power Conversion USB UPS

Device status

This device is working properly.

OK Cancel

If APC UPS is displayed as the device driver, please review FAQ document FA159743





All Control Panel Items

Control Panel > All Control Panel Items

File Edit View Tools

Device Manager

File Action View Help

TSLAB-L6

- > Audio inputs and outputs
- > Batteries
- > Computer
- > Disk drives
- > Display adapters
- > DVD/CD-ROM drives
- > Human Interface Devices
 - American Power Conversion USB UPS
 - HID-compliant consumer control device
 - HID-compliant consumer control device
 - HID-compliant system controller
 - USB Input Device
 - USB Input Device
 - USB Input Device
- > IDE ATA/ATAPI controllers
- > Keyboards
- > Mice and other pointing devices
- > Monitors
- > Network adapters
- > Portable Devices
- > Ports (COM & LPT)
- > Print queues
- > Printers
- > Processors
- > Security devices

American Power Conversion USB UPS Properties

General Driver Details Events Power Management

American Power Conversion USB UPS

Device type: Human Interface Devices

Manufacturer: American Power Conversion

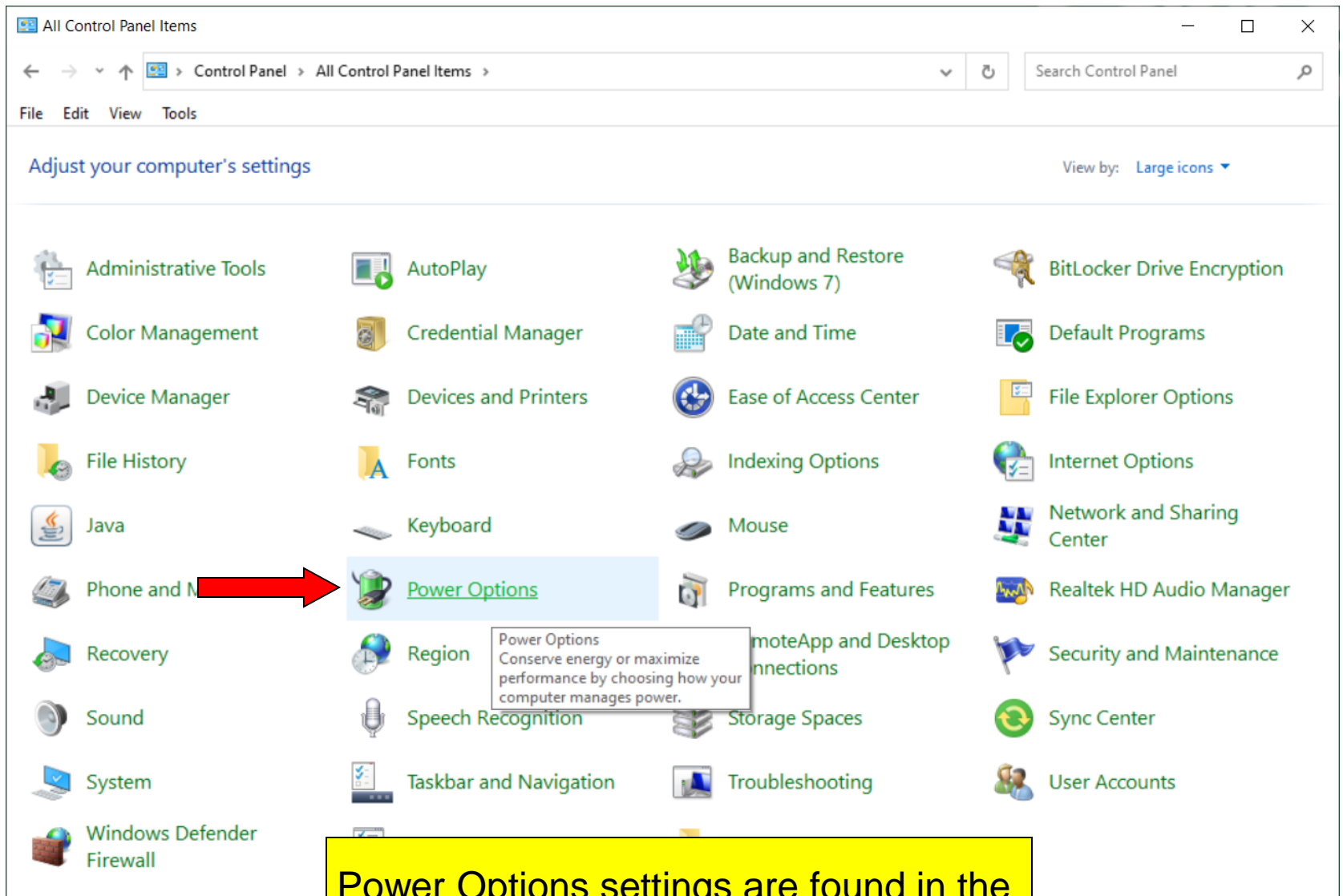
Location: Port_#0001.Hub_#0003

Device status

[This device is working properly.]

OK Cancel





Power Options

Control Panel > All Control Panel Items > Power Options

File Edit View Tools

Control Panel Home

Choose what the power buttons do

Create a power plan

Choose when to turn off the display

Change when the computer sleeps

Choose or customize a power plan

A power plan is a collection of hardware and system settings (like display brightness, sleep, etc.) that manages how your computer uses power. [Tell me more about power plans](#)

[Change settings that are currently unavailable](#)

Plans shown on the battery meter

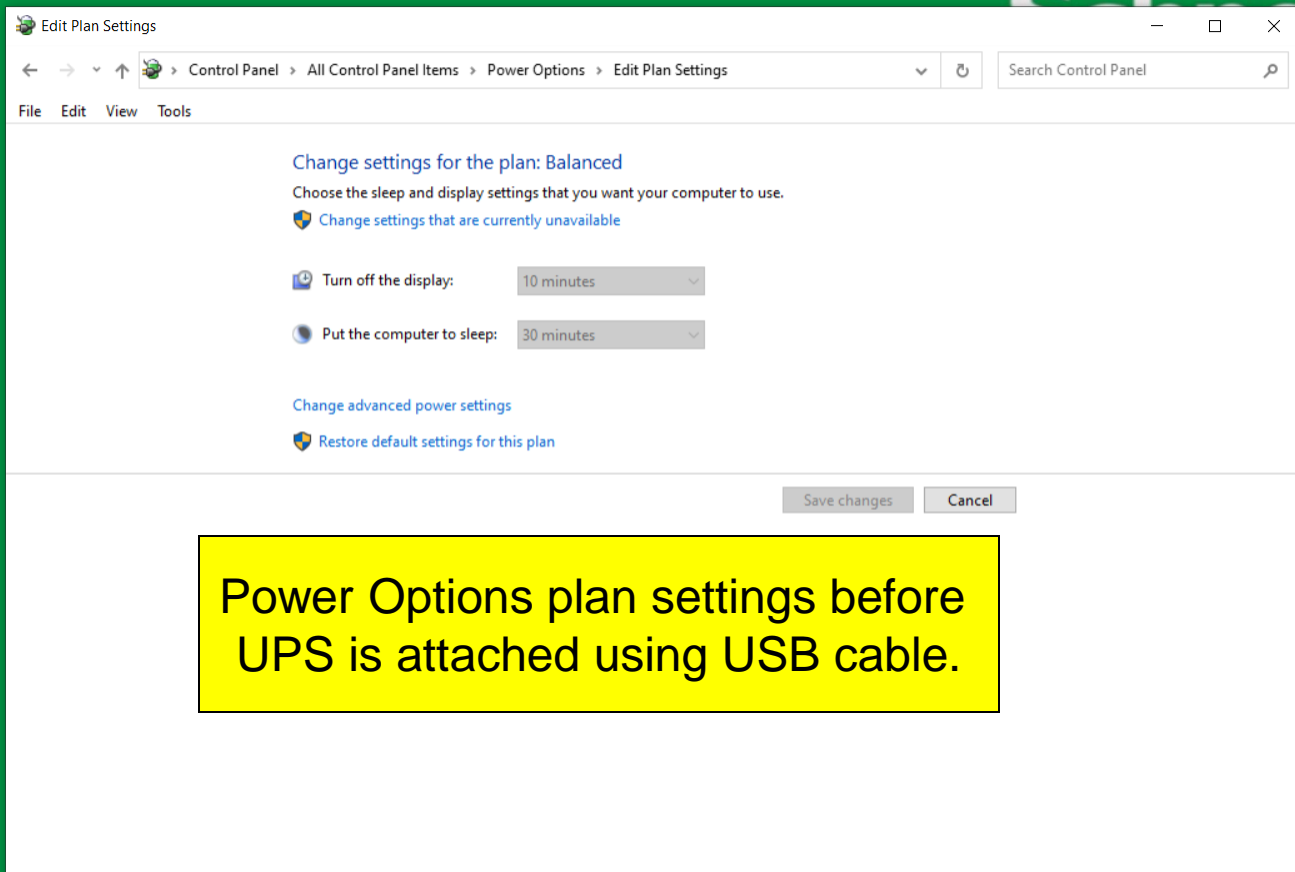
- ☒ **Balanced (recommended)**
Automatically balances performance with energy consumption on capable hardware. [Change plan settings](#)
- ☐ **Power saver**
Saves energy by reducing your computer's performance where possible. [Change plan settings](#)

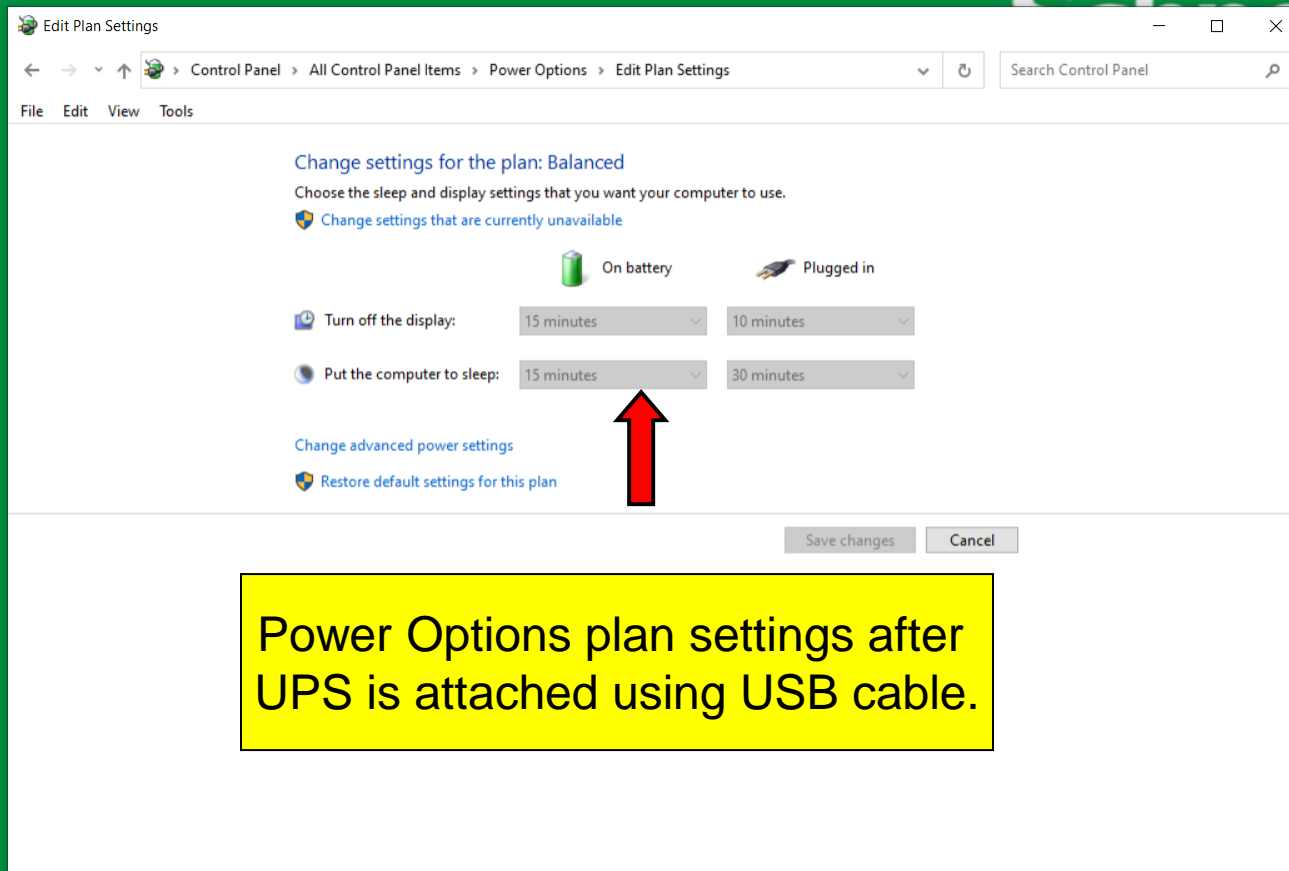
Show additional plans

Select change plan settings to view the configuration.

See also

- Windows Mobility Center
- User Accounts





Power Options plan settings after
UPS is attached using USB cable.



Notice the battery icon has been
Added to the system tray.

Edit Plan Settings

←

→

⌵

⬆

Control Panel > All Control Panel Items > Power Options > Edit Plan Settings

⌵

↺

Search Control Panel

File Edit View Tools

Change settings for the plan: Balanced

Choose the sleep and display settings that you want your computer to use.

Change settings that are currently unavailable

On battery

Plugged in

Turn off the display:

15 minutes

10 minutes

Put the computer to sleep:

15 minutes

30 minutes

Change advanced power settings

Restore default settings for this plan

Save changes

Cancel

To change the configuration select change advanced power setting.



Recycle Bin



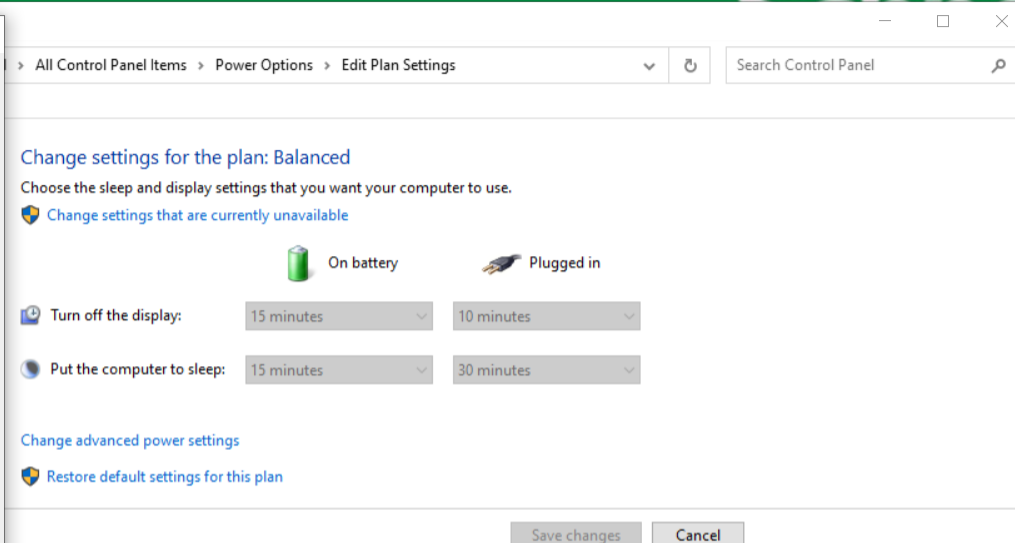
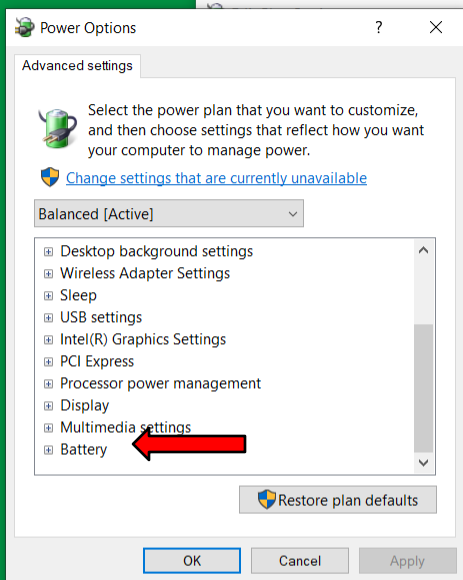
Network



Desktop apps



This PC



The battery settings are at the bottom of the list.



