

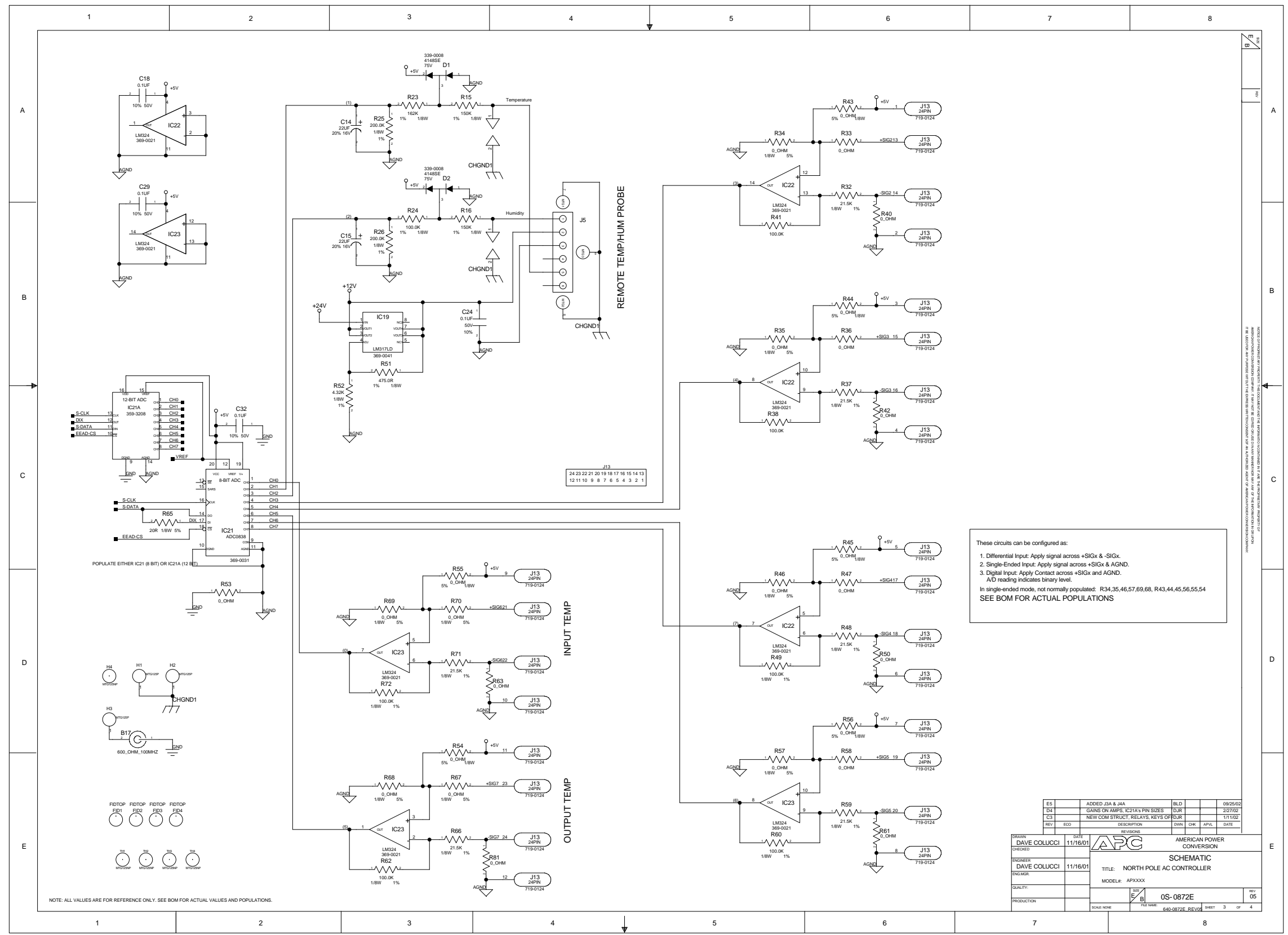
REV	ECG	DATE	DESCRIPTION	OWN	CHK	APPL	DATE
E3		11/16/01	ADDED J3A & J4A				08/25/02
E4		11/16/01	R3 DE-POPULATE NOTE				2/27/02
C3		11/16/01	NEW COM STRUCT, RELAYS, KEYS OF BUR				1/11/02

DESIGN	DAVE COLUCCI	DATE	11/16/01	AMERICAN POWER CONVERSION
PROJECT	DAVE COLUCCI	DATE	11/16/01	SCHEMATIC
ENGINEER	DAVE COLUCCI	DATE	11/16/01	TITLE: NORTH POLE AC CONTROLLER
QUALITY		DATE		MODEL: APOXXXX
PRODUCTION		DATE		05-0872E

NOTE: ALL VALUES ARE FOR REFERENCE ONLY. SEE BOM FOR ACTUAL VALUES AND POPULATIONS.



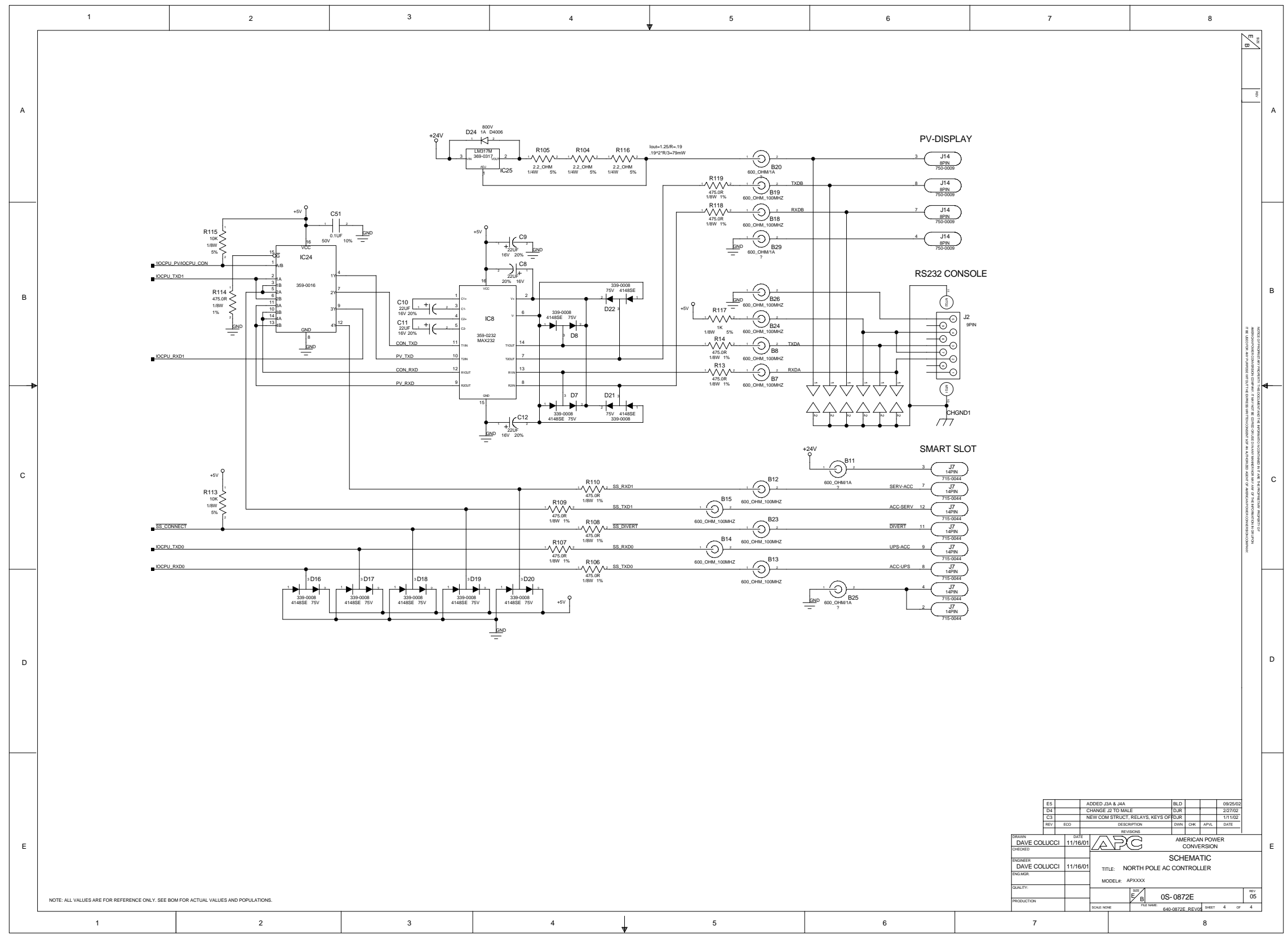


These circuits can be configured as:

- Differential Input: Apply signal across +SIGx & -SIGx.
- Single-Ended Input: Apply signal across +SIGx & AGND.
- Digital Input: Apply Contact across +SIGx and AGND.

A/D reading indicates binary level.  
 In single-ended mode, not normally populated: R34,35,46,57,69,68, R43,44,45,56,55,54  
 SEE BOM FOR ACTUAL POPULATIONS

DESIGN	DAVE COLUCCI	DATE	11/16/01	REV	E	DESCRIPTION	AMERICAN POWER CONVERSION
PROJECT	DAVE COLUCCI	DATE	11/16/01	REV	B	DESCRIPTION	SCHEMATIC
ENGINEER	DAVE COLUCCI	DATE	11/16/01	REV	A	DESCRIPTION	TITLE: NORTH POLE AC CONTROLLER
QUALITY		DATE		REV		DESCRIPTION	MODEL: APOXXXX
PRODUCTION		DATE		REV		DESCRIPTION	OS-0872E



NOTE: ALL VALUES ARE FOR REFERENCE ONLY. SEE BOM FOR ACTUAL VALUES AND POPULATIONS.

ES	ADDED J2A & J2A	BLD		08/25/02		
D4	CHANGE J2 TO MALE	DJR		2/27/02		
C3	NEW COM STRUCT, RELAYS, KEYS OF DUR			1/11/02		
REV	ECG	DESCRIPTION	DWN	CHK	APPL	DATE
DRAWN: DAVE COLUCCI 11/16/01 PROJECT: AMERICAN POWER CONVERSION ENGINEER: DAVE COLUCCI 11/16/01 TITLE: NORTH POLE AC CONTROLLER MODEL: APXXXX QUALITY: E/B PRODUCTION: 0S-0872E REV05 SHEET 4 OF 4						