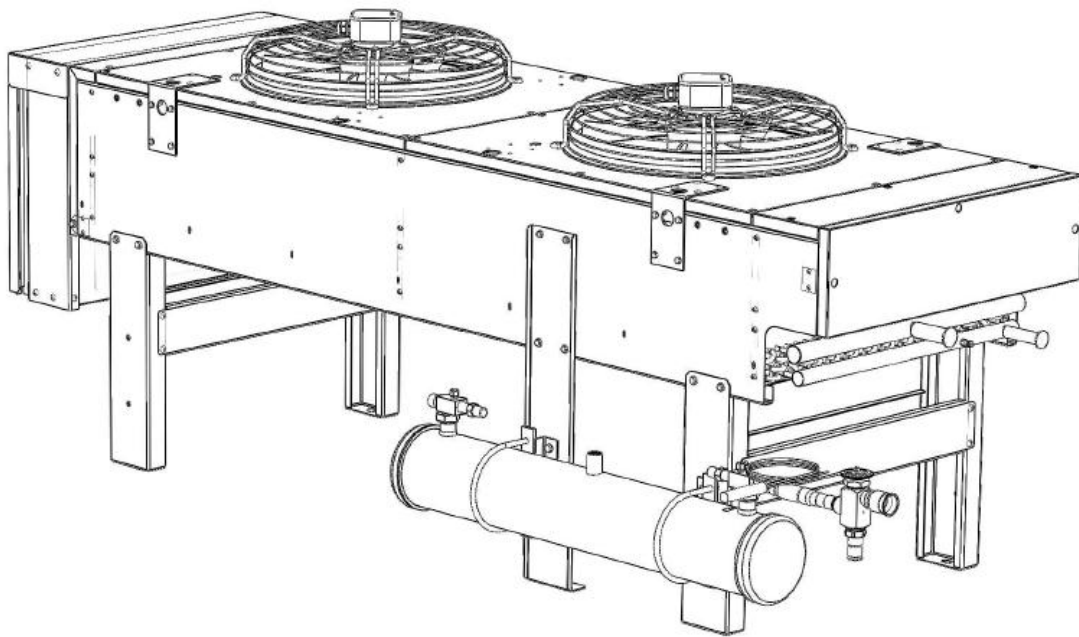


# Low Ambient Kit

## Assembly and Installation Manual



PN: 116412000

## GENERAL SAFETY INFORMATION

Assembly and installation are to be performed only by qualified personnel who are familiar with local codes and regulations, and are experienced with this type of equipment.

Avoid contact with sharp edges. They are a potential injury hazard.

This equipment may contain a substance that harms public health and the environment. Venting certain refrigerants to the atmosphere is illegal. Refrigerant recovery devices must be used when installing or servicing this equipment. Consult local codes for requirements at your location.

**WARNING:** There may be more than one source of electrical power supplied to this unit. Do not install or service before disconnecting all power sources.

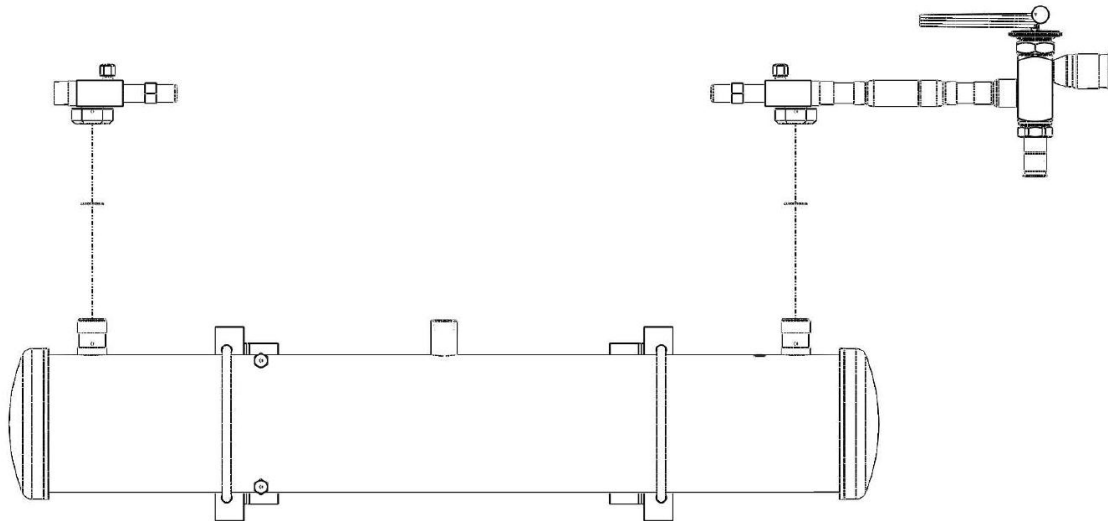
## INSPECTION

Damaged material is the responsibility of the freight carrier and should not be returned to the manufacturer without prior approval. Carefully inspect all items for damage and immediately file a claim with the carrier.

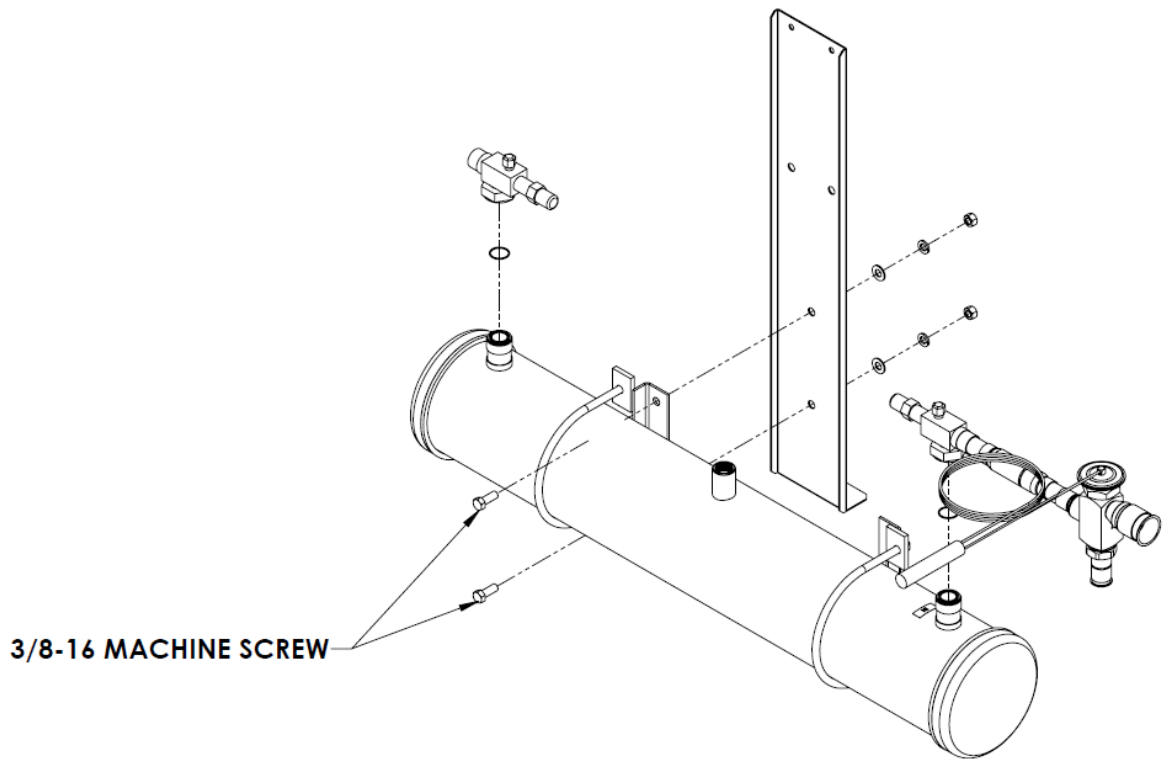
Check all items in the crate against parts listed in this manual.

## UNIT ASSEMBLY AND INSTALLATION

1) Remove the Rotolok valves from the inlet and outlet of the tank and install seals prior to mounting the receiver tank. Depending on the location of the tank, the receiver clamps may need to be rotated 180° prior to reinstalling the Rotolok valves. Facing the headers the tanks are setup by default to install on the left side of the unit. After installing the seals, tighten the valves properly.



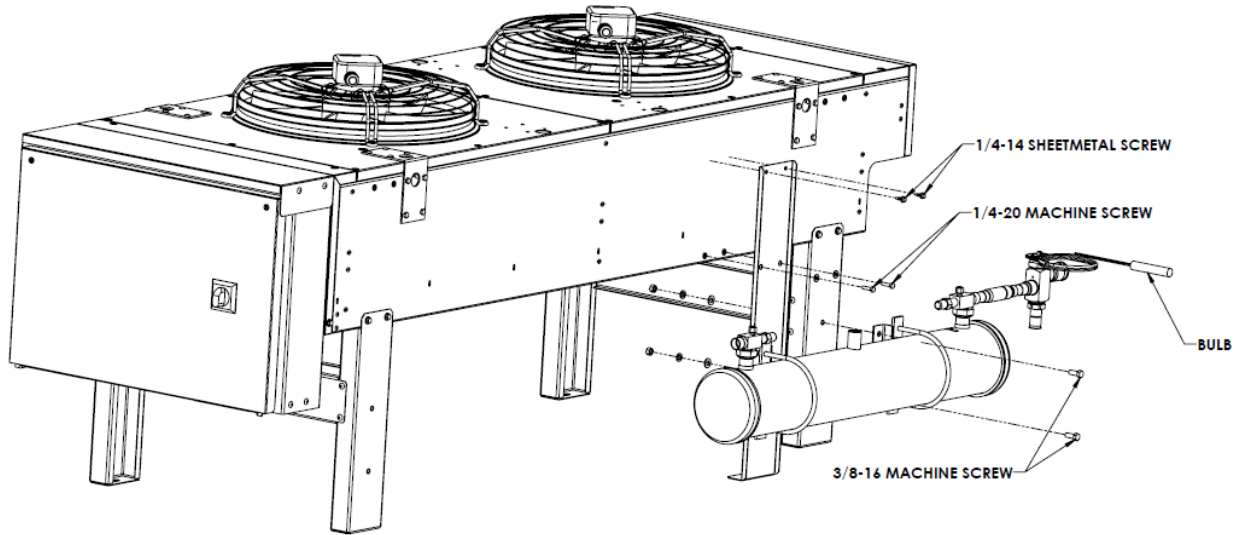
2) Mount the rear support leg to the tank using the 3/8" bolt and hardware provided.



3) Place the tank near the unit and secure the front clamp to the leg on the unit using the 3/8" bolts and hardware provided.

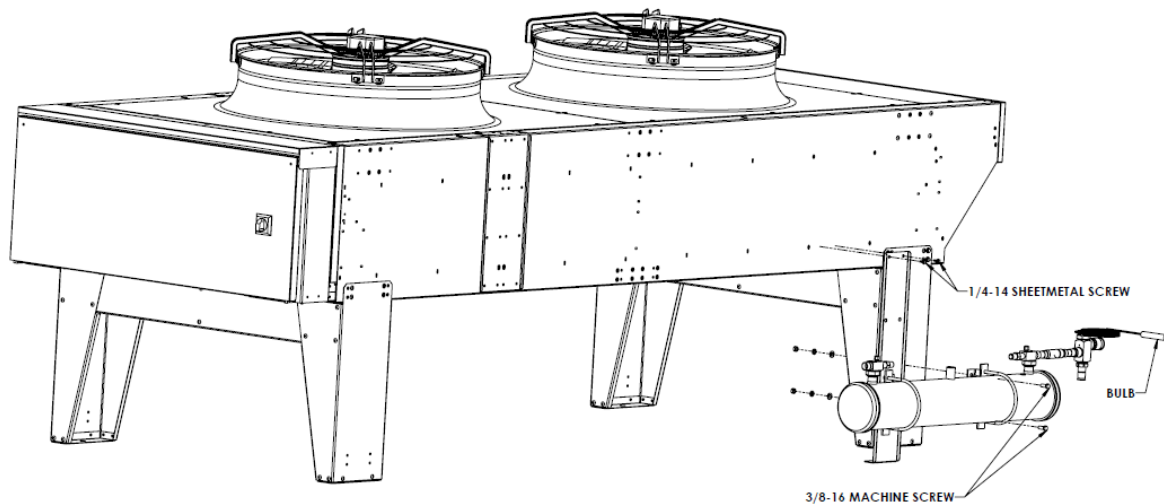
3a) For the smaller 500 mm fan diameter units, secure the freestanding leg to the unit using the 1/4" bolts provided. Mark and drill 3/16" pilot holes for the upper mounting holes. Secure using the provided #14 sheet metal screws.

### 500mm UNIT

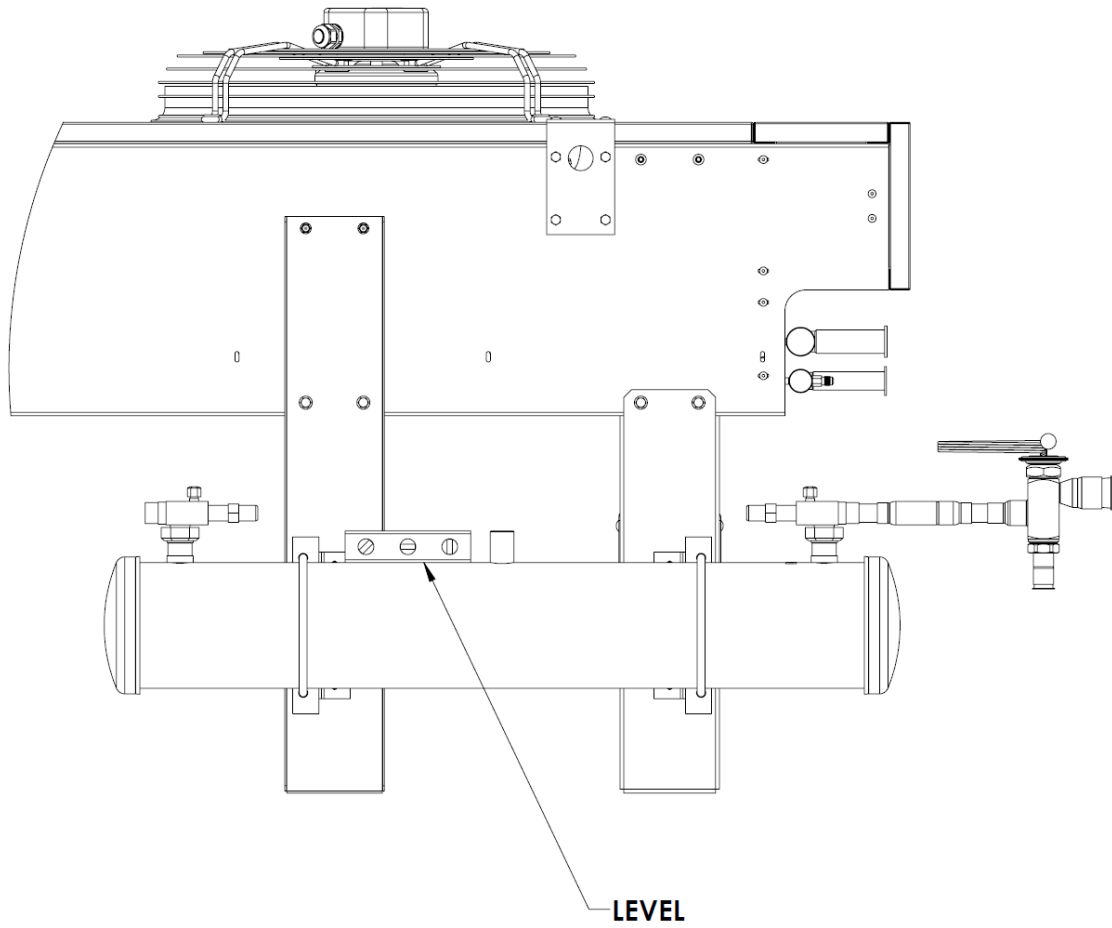


3b) For 800mm units, mark and drill 3/16" pilot holes for the two sheet metal screws. Do not drill more than 3/8" into the units casing. Further drilling may damage the coil. Secure the freestanding leg using the provided sheet metal screws.

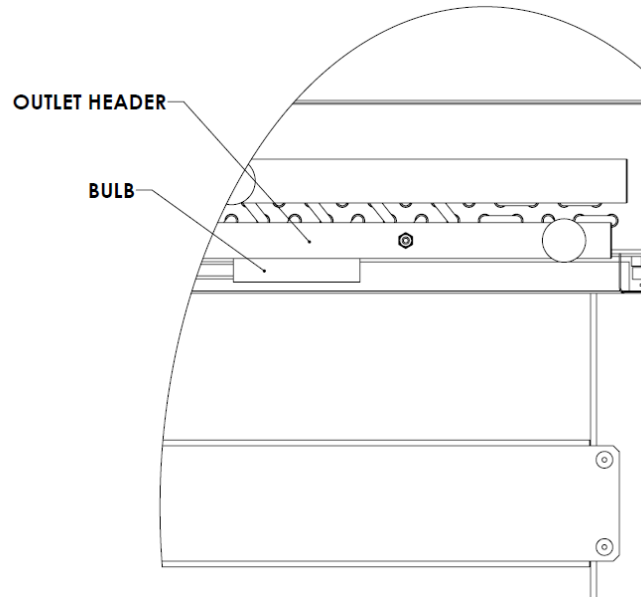
### 800mm UNIT



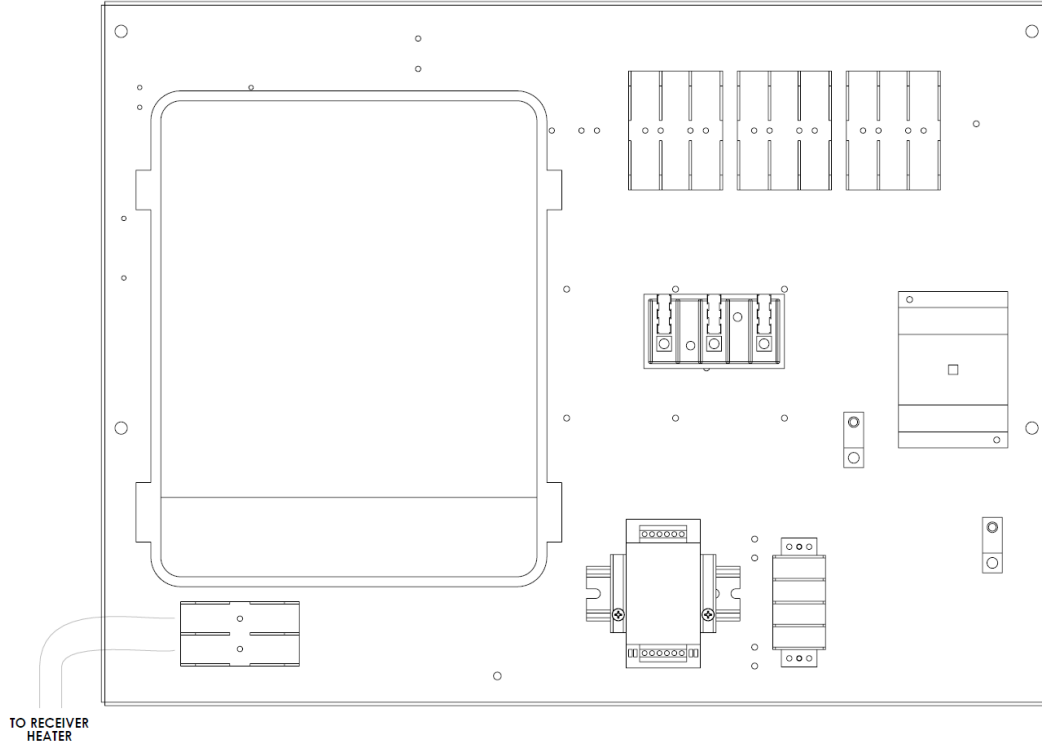
4) Insure that the receiver tank has been installed level position. Failure to do so will cause the system to malfunction.



5) Strap the bulb located on the LAC valve to the outlet header of the condenser using the provided strap.



7) Route the electrical wiring from the receiver heater to the knockout located at the bottom of the units electrical box. Open the electrical box and located per the schematic FB16.



NOTE: Be sure to properly support the piping leaving the valve and outlet of the receiver.