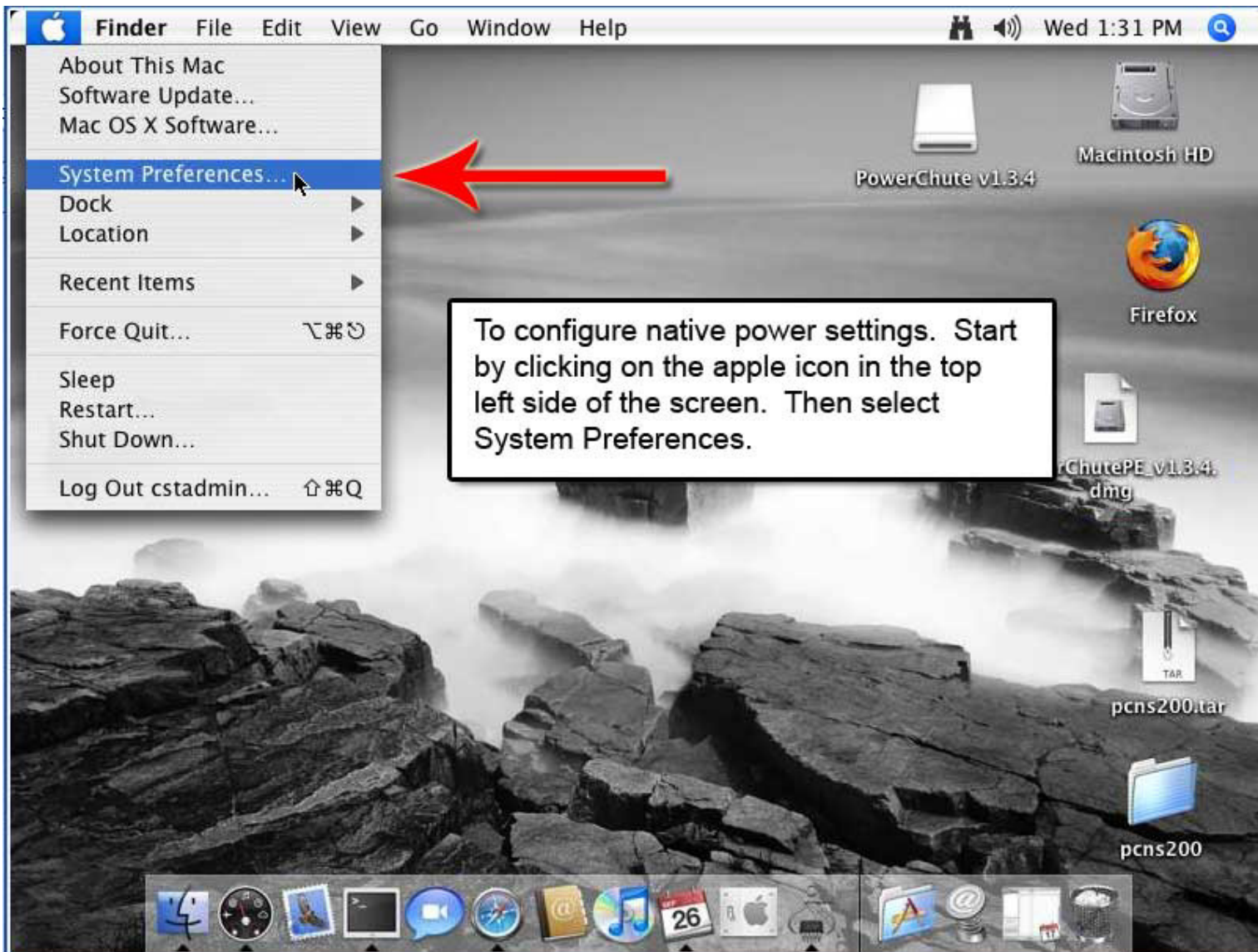


How to configure native shutdown on Macintosh OS X communicating with Back-UPS

1 - Attached communications cable from Back-UPS to the computer.

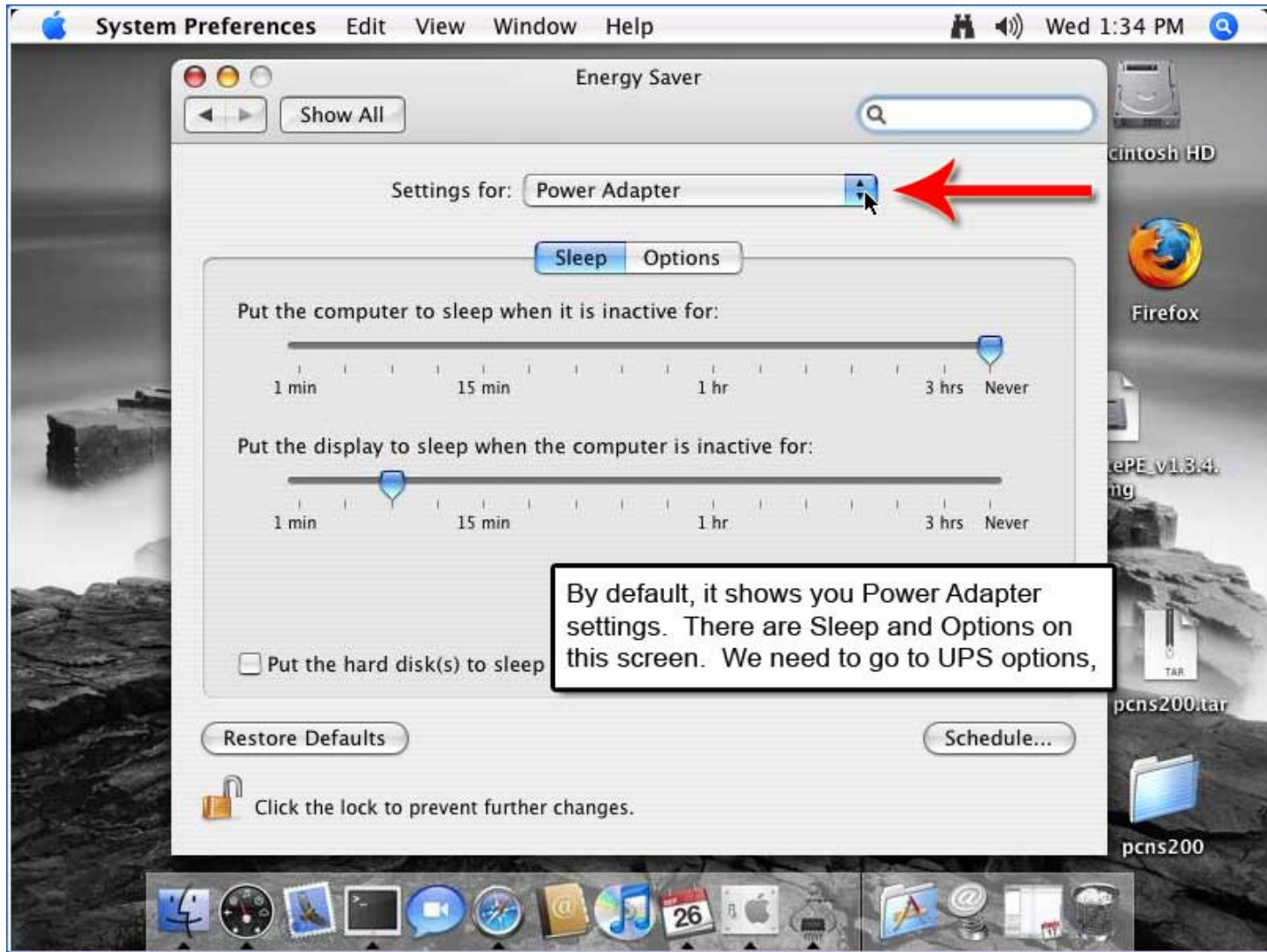
2 - Select System preferences / Energy Saver / UPS Options

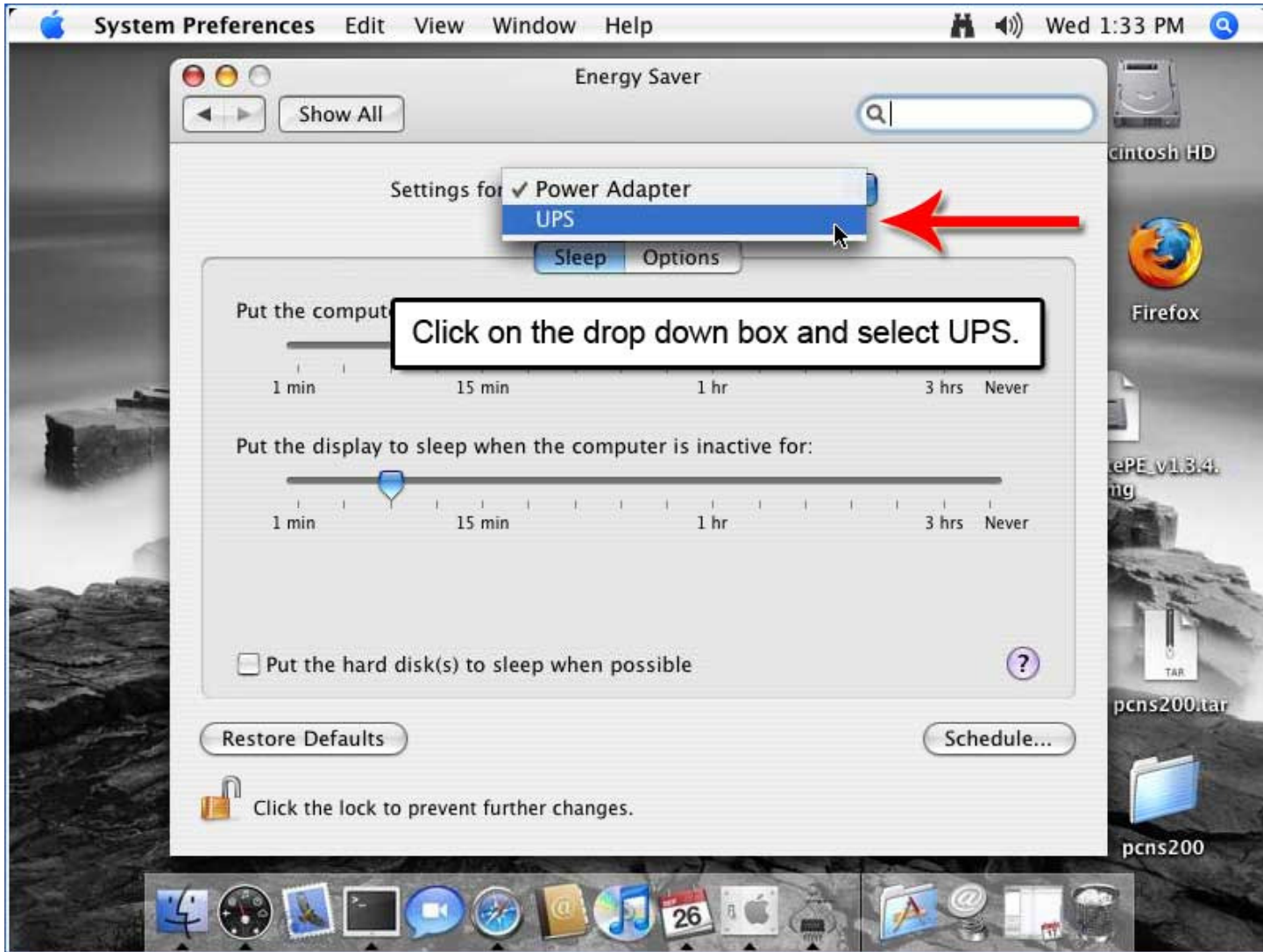
3 - Configure shutdown parameters.





For Mac OS 10.5 and below





System Preferences Edit View Window Help Wed 1:34 PM

Energy Saver

Settings for: UPS

Sleep UPS

UPS Battery Level: 100% full

UPS Model: Back-UPS ES 500 FW:824.B1a.D USB FW:B1a

- Shutdown the computer when it has been on UPS power for:
1 min 5 min 10 min 15 min
- Shutdown the computer when the time left on UPS power is:
1 min 5 min 10 min 15 min
- Shutdown the computer when the UPS power level drops to:
1% 25% 50% 75% 100%

Restore Defaults Schedule...

Click the lock to prevent further changes.

Once you select UPS, a UPS menu appears under the drop down box. Click the UPS menu and the UPS options will appear. You can see the model and battery capacity.

Energy Saver

Show All

Settings for: UPS

Sleep UPS Options

UPS Battery Level: 100% full

UPS Model: Back-UPS ES 750 FW:841.I2 .D USB FW:I2

Shutdown the computer when it has been on UPS power for:

1 min 5 min 10 min 15 min

Shutdown the computer when the time left on UPS power is:

1 min 5 min 10 min 15 min

Shutdown the computer when the UPS power level drops to:

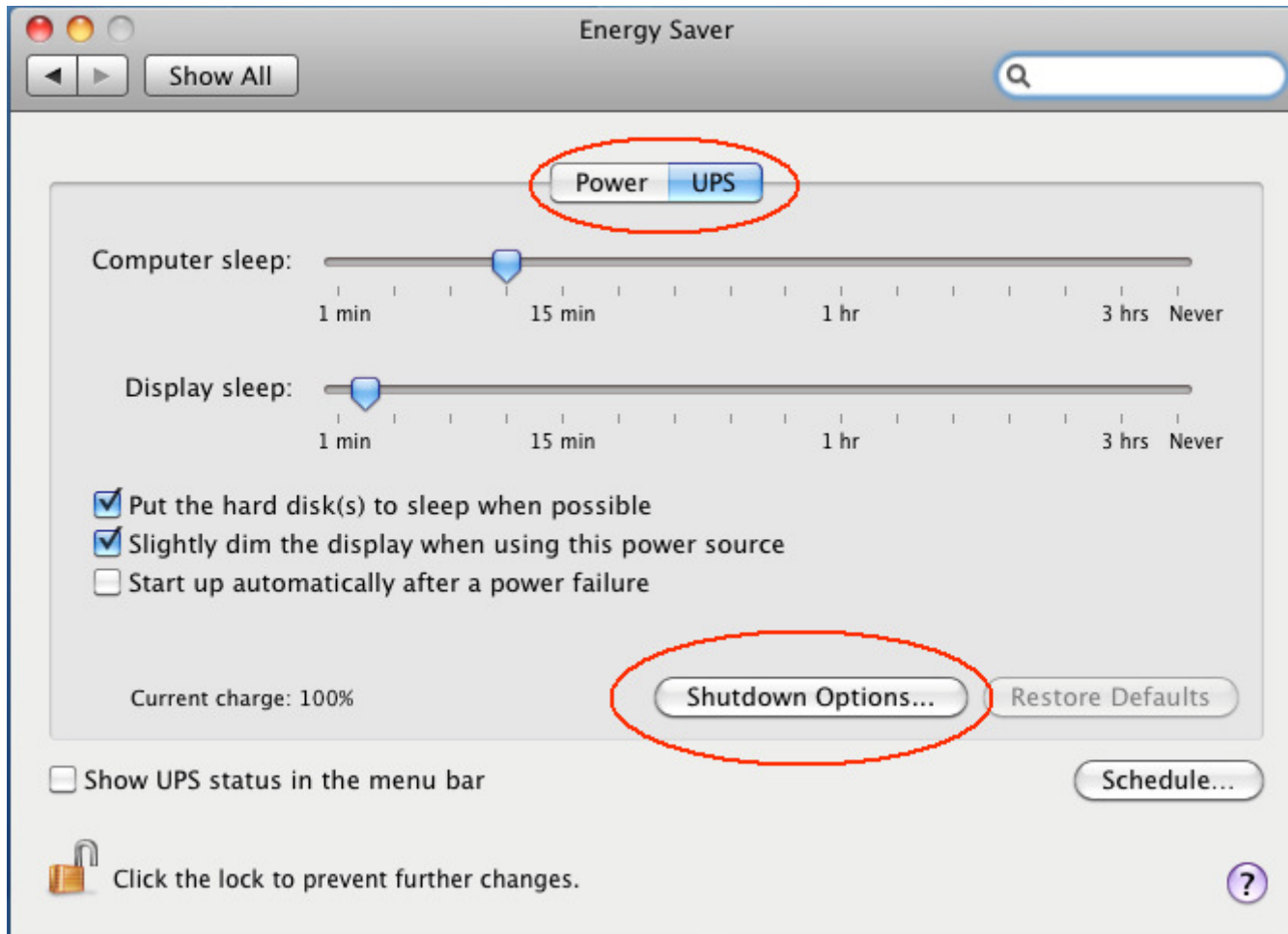
1% 25% 50% 75% 100%

Restore Defaults Schedule...

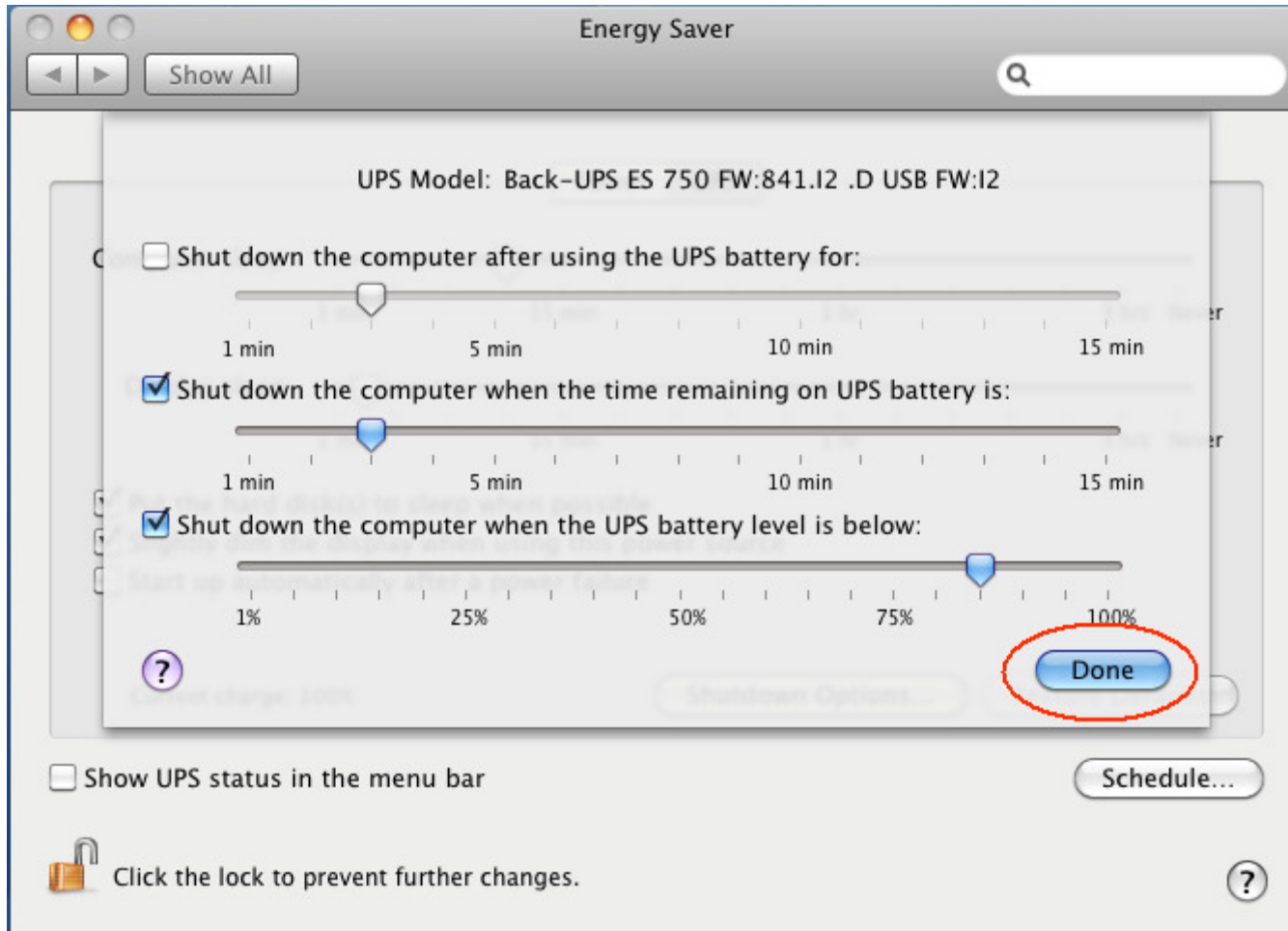
Click the lock to prevent further changes.

Configure shutdown parameters

For Mac OS 10.6 and above



Select UPS – Shutdown Options



Configure the options then select Done