


Configure SoMove for Ethernet TCP/IP connection to a device

This document will guide you through the necessary steps to connect a Schneider VSD with Modbus TCP/IP communication to the configuration software – SoMove

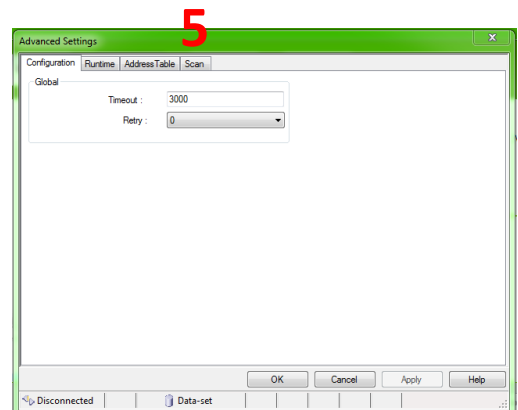
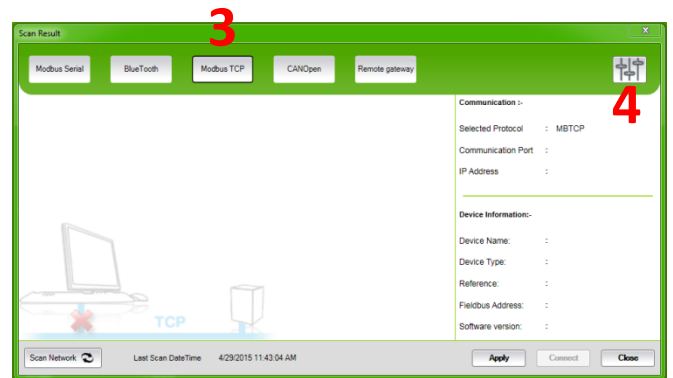
1. Launch SoMove (Version 2.1 or higher)

2. Select  **Edit Connection**

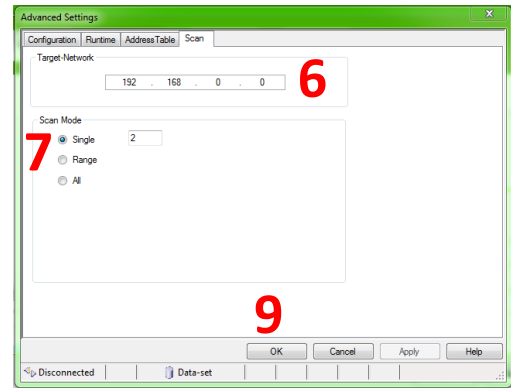
3. Select 

4. Select 

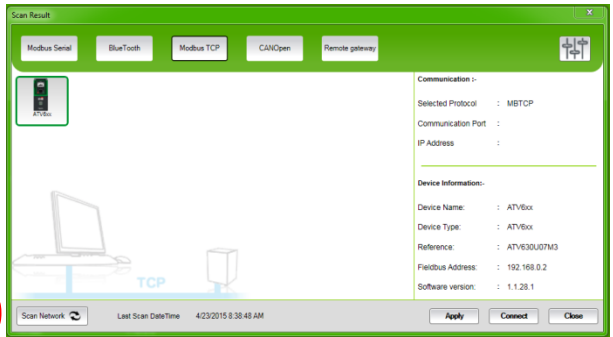
5. Select the Scan tab



6. Enter the first three octet values of the target network, in this example the connected drive has an IP address of 192.168.0.2, the last octet "2" is replaced with "0".
7. Select the scan mode, single (only one drive), range (scan from one address to another), scan the entire network (all possible addresses).



8. Enter the address/es of the connected drives/s, in this example only one drives is connected to the network and the last octet of is "2"
9. Select the "OK" button



10. Scan the network and the connected drive will appear. Double click on the device to connect.