

Main

Range of product	OsiSense XM
Product or component type	Electronic pressure sensors
Pressure sensor type	Pressure transmitter
Pressure sensor size	100 bar
Pressure sensor name	XMLE
Controlled fluid	Fresh water (0...80 °C) Air (-15...80 °C) Corrosive fluid (-15...80 °C) Hydraulic oil (-15...80 °C)
Fluid connection type	G 1/4A (male) conforming to ISO 228
Type of output signal	Analogue
Electrical connection	Male connector EN 175301-803-A (ex DIN43650)
Analogue output function	4...20 mA, 2 wires
[Us] rated supply voltage	24 V DC, voltage limits: 11...33 V
Diameter	40 mm

Complementary

Enclosure material	Anodised aluminium
Type of installation	Control circuit
Operating position	Any position
Materials in contact with fluid	Stainless steel type AISI 303
Maximum permissible accidental pressure	200 bar
Maximum permissible pressure - per cycle	100 bar
Destruction pressure	300 bar
Drift of the sensitivity	+/- 0.015 % of measuring range/°C
Drift of the zero point	+/- 0.03 % of measuring range/°C
Protection type	Overload protection Reverse polarity Short-circuit
Local display	Without
Current consumption	< 20 mA
Mechanical durability	>= 10000000 cycles
Response time on output	< 5 ms
Measurement accuracy	+/- 0.3 % of the measuring range
Product weight	0.27 kg

Environment

IP degree of protection	IP65
Vibration resistance	35 gn (f = 60...2000 Hz) 5 gn (f = 25...200 Hz)
Protective treatment	TC
Shock resistance	50 gn
Standards	CE EN 50081 EN 50082
Product certifications	CSA UL
Ambient air temperature for operation	-15...80 °C

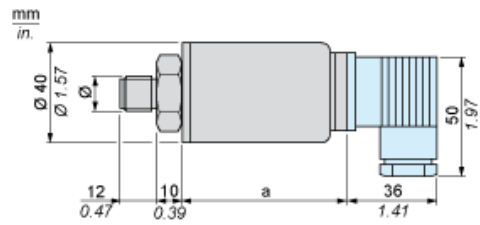
Offer Sustainability

RoHS (date code: YYWW)	Compliant - since 0627 - Schneider Electric declaration of conformity Schneider Electric declaration of conformity
REACH	Reference not containing SVHC above the threshold

Contractual warranty

Warranty period	18 months
-----------------	-----------

Dimensions



Ø : G 1/4 (male)

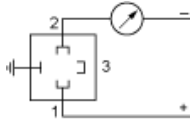
Dimensions in mm

a
75

Dimensions in in.

a
2.95

Wiring Diagram



Output Curves

