

Product data sheet

Characteristics

XUY450BC3H1M12

Phototo electric sensors for Roller convoyer- compact design -
DC supply, solid-state output



Main characteristics

Sensor name	XUY
Sensor design	Roller sensor
Detection system	Diffuse
Material	Metal
Type of output signal	Discrete
Supply circuit type	DC
Wiring technique	3-wire
Discrete output type	PNP or NPN
Discrete output function	1 NO or 1NC programmable
Electrical connection	Pigtail M12 connector straight male 4 pin
Cable length	1 m
Product specific application	convoyer system
Emission	Infrared
[Sn] nominal sensing distance	0.15 m diffuse
Sensing distance	White target 92% (0.2 m)
Sensing distance	black target 6% (0.1 m)

Complementary characteristics

Enclosure material	Aluminium
Lens material	Polycarbonate
Cover material	PVC
Output Type	Solid state
Pulse Frequency	1 KHz
Status LED	1 LED color : yellow for output signal
[Us] rated voltage	24 V DC with reverse polarity protection
Supply voltage limits	18...30 V DC
Switching capacity in mA	100 mA (overload and short-circuit protection)
Switching frequency	500 Hz
Voltage drop	< 2 V at 100 mA (closed state)
Current consumption	< 35 mA (no-load)
Delay response	1 ms
Height / Diameter	12mm
Length	450mm
Number of sensors	3
Sensors pitch (Spacing)	108 mm
Mounting parts	Hexagonal 11.2

The information provided in this documentation contains general descriptions and/or technical characteristics of the performance of the products contained herein.
This documentation is not intended as a substitute for and is not to be used for determining suitability or reliability of these products for specific user applications.
It is the duty of any such user or integrator to perform the appropriate and complete risk analysis, evaluation and testing of the products with respect to the relevant specific application or use thereof.

Environment characteristics

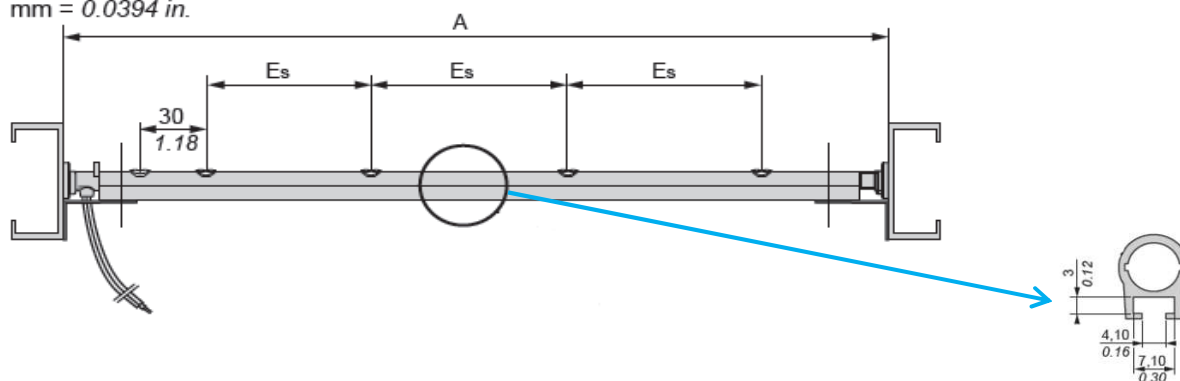
Product certifications	CCSAus
	CE
Ambient air temperature for operation	-10...55°C
Ambient air temperature for storage	-20...80°C
IP degree of protection	IP50 conforming to IEC 60529

XUY450BC3H1M12

Phototo electric sensors for Roller convoyer- compact design - DC

Dimensions

1 mm = 0.0394 in.

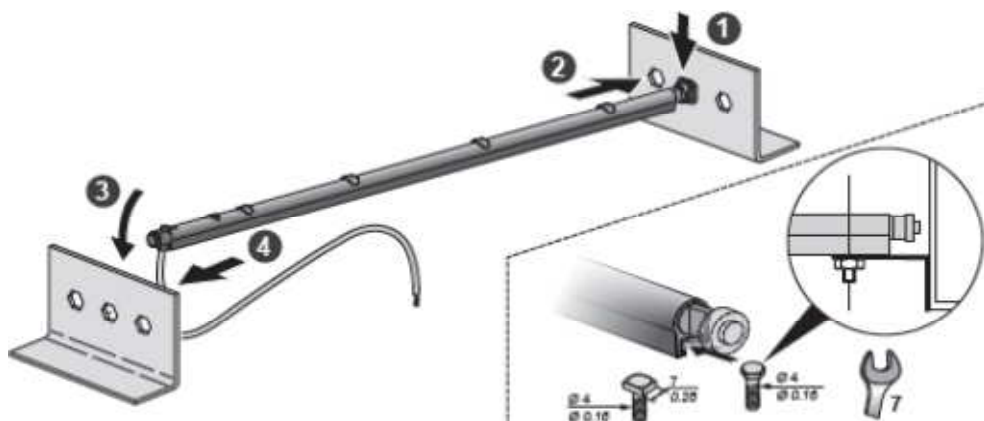


A: 450 mm
ES: 108 mm

XUY450BC3H1M12

Phototo electric sensors for Roller convoyer- compact design - DC

Mounting and clearance

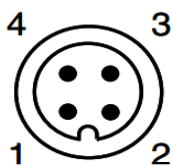
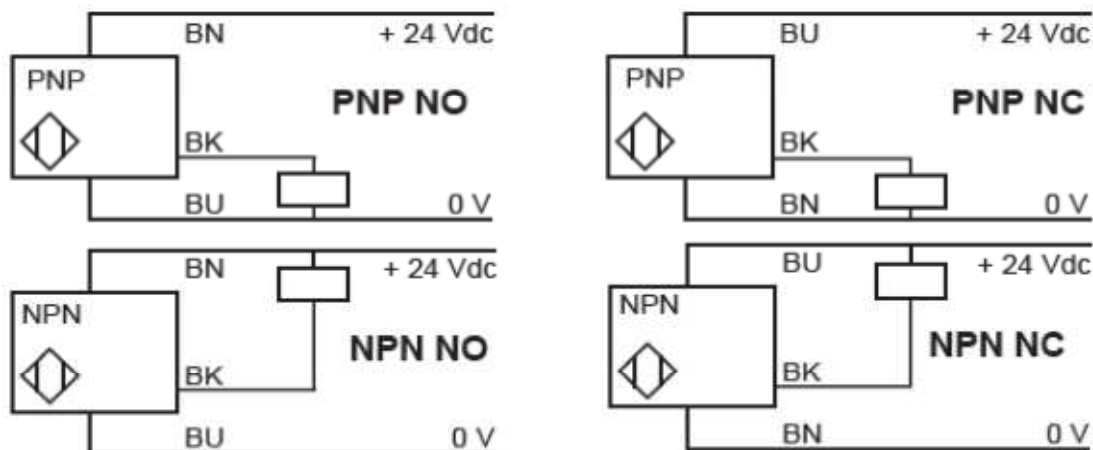


- (1) Position the spring-loaded end of the sensor on the convoyer extrusion
- (2) Compress the spring
- (3) With the spring still compressed attach the cable end
- (4) Release the pressure on the spring

XUY450BC3H1M12

Phototo electric sensors for Roller convoyer- compact design - DC

simple sensor NC or NO, PNP and NPN



- (1) BN
- (2) WH (not connected)
- (3) BU
- (4) BK