

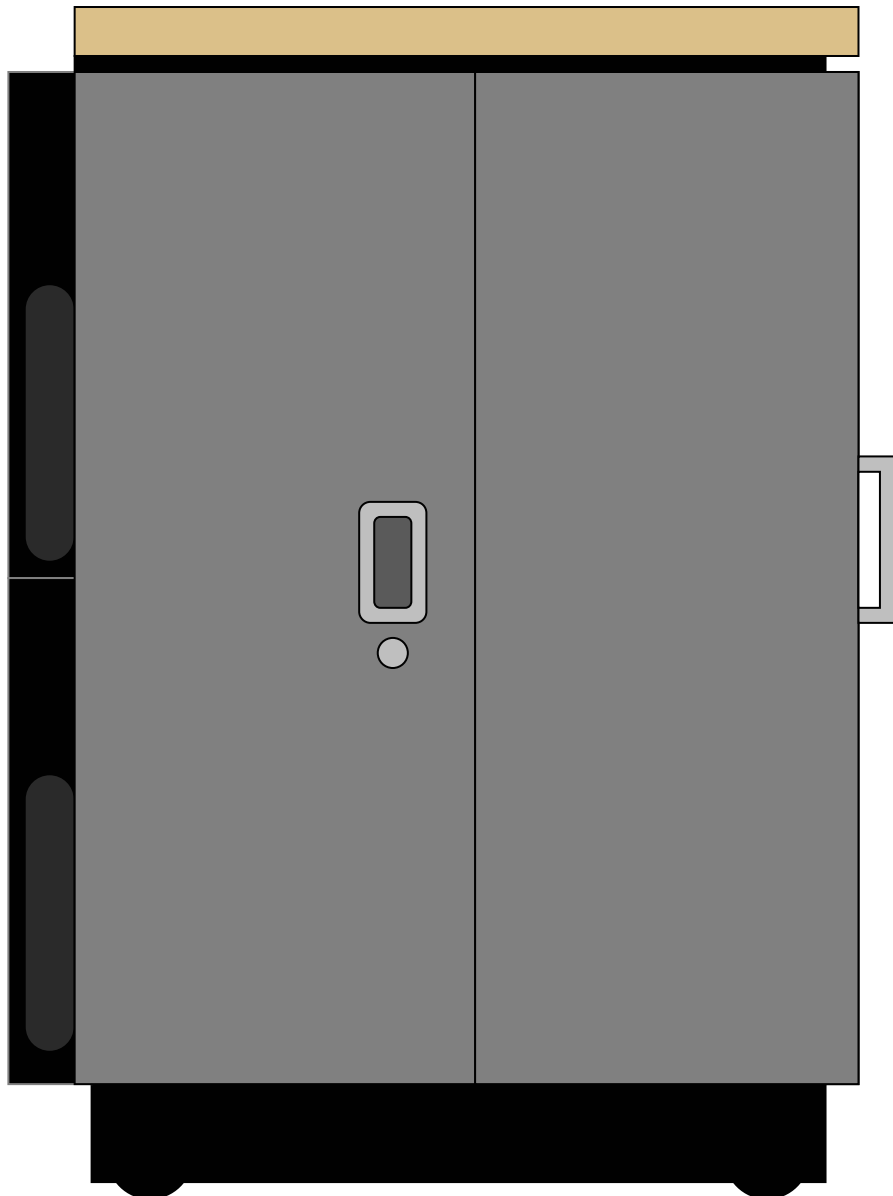
# NetShelter CX2 Deconstruct

Taking the CX2 apart to place in limited-access locations.



The Netshelter CX2 has a unique and very convenient 'split-chassis' design which allows it to be broken down into sub-assemblies. This can be very useful when locating the CX2 somewhere with limited access such as up stairs or down narrow corridors.

In this example we take apart a Netshelter CX2 24U



# NetShelter CX2 Deconstruct

Taking the CX2 apart to place in limited-access locations.

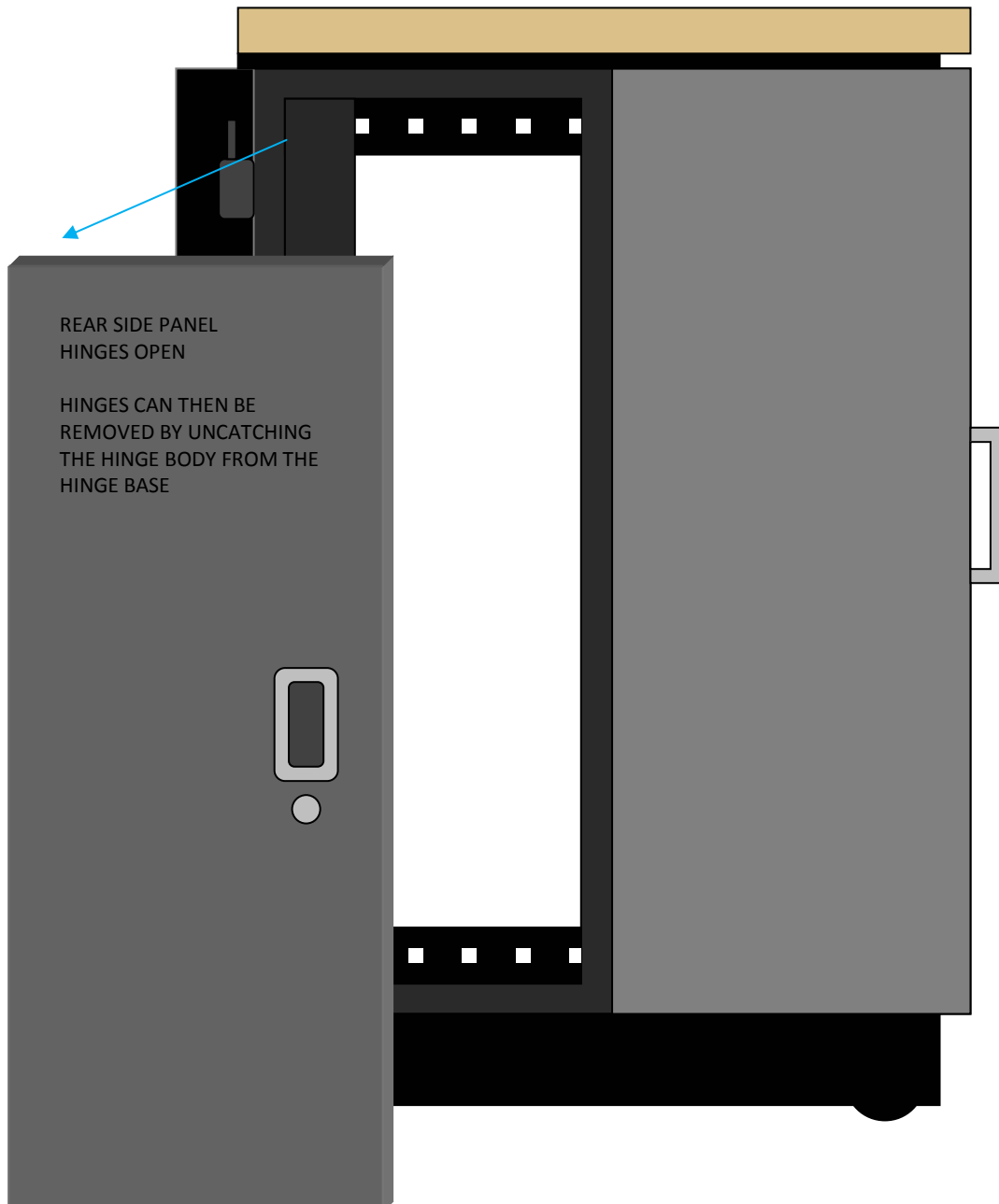
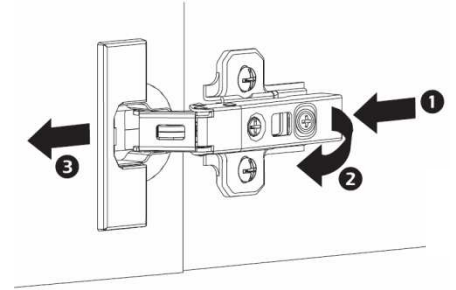


## Step 1 : Remove the rear side panels

The rear side panel is first to come off. This panel is on removable hinges so open the panel using the recessed handle. Locate the small lever at the rear of the hinge arm (1) and press it towards you to (2) release the hinge body from the base.

Do this for all hinges from the bottom to the top, leaving the top until last so you can easily support the panels weight when it (3) comes away.

Please always carry out this task this with two people. One to undo the hinges and one to hold the panel.



# NetShelter CX2 Deconstruct

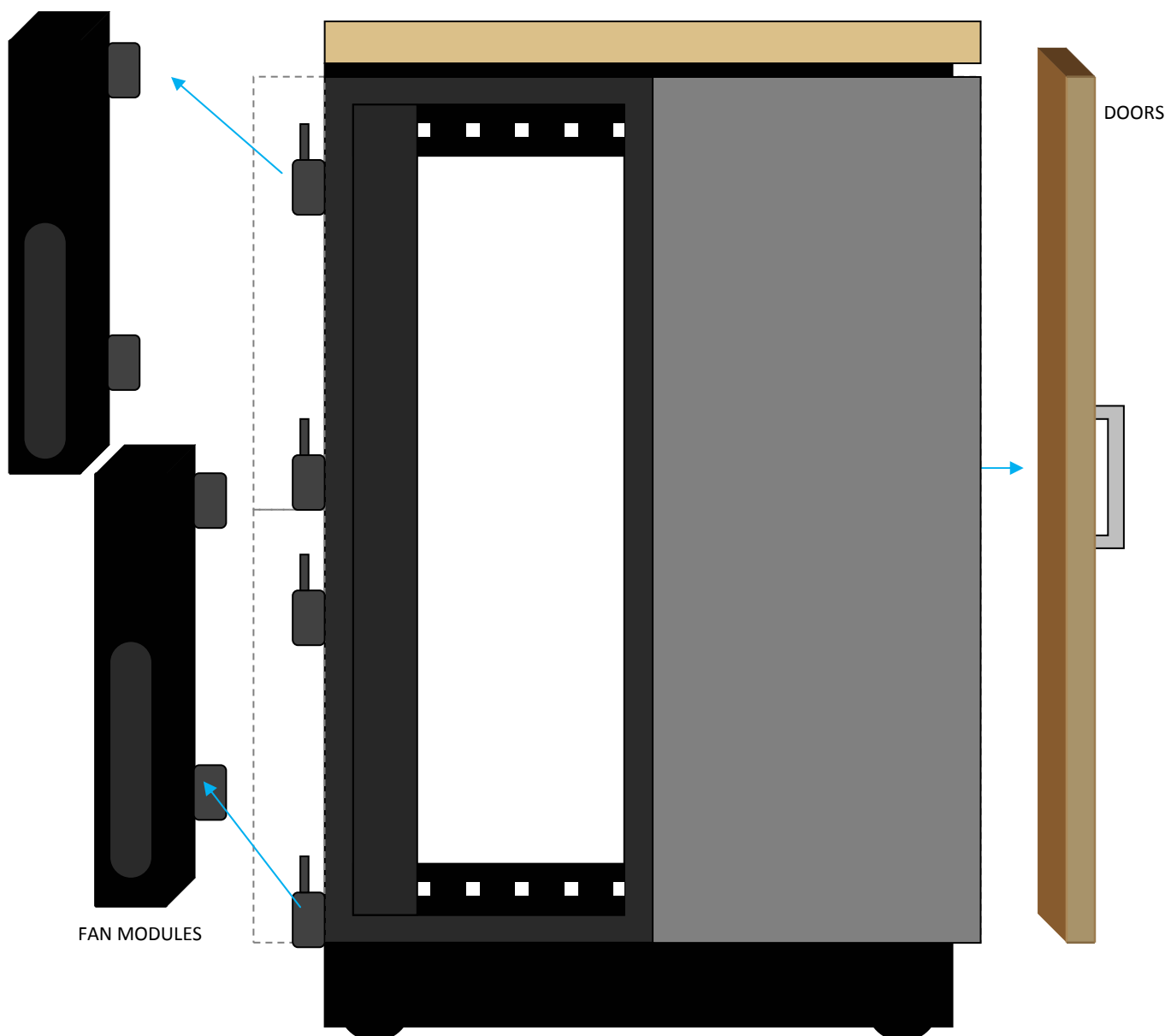
Taking the CX apart to place in limited-access locations.



## Step 2 : Remove the Doors and Fan Modules

The doors can be removed in the same way as the side panels.

The Fan Module Exhaust Units on the rear of the cabinet simply lift off when open, starting with the top unit but **BEWARE** there is a power jack connected on the inside, with some slack. This should be disconnected from the Fan Modules once you've opened them, before lifting them off.



# NetShelter CX2 Deconstruct

Taking the CX apart to place in limited-access locations.



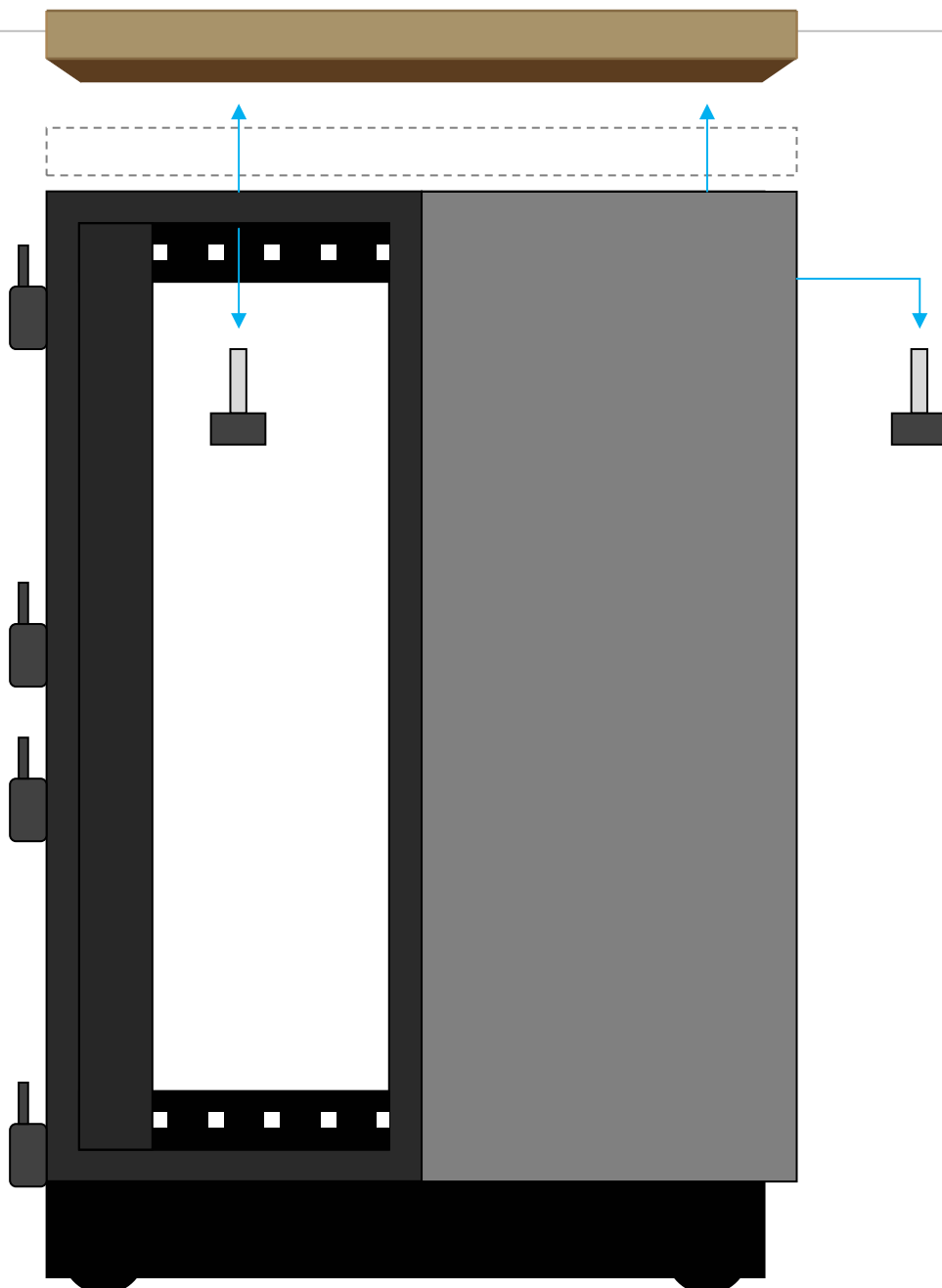
## Step 3 : Top

The Top is held in place by 4 large black thumb-screws in the inner ceiling of the enclosure – 2 at the front of the rack and 1 each in the rear cavity, just inside the rear panels.

Undo all 4 of these fully to release the top. Lift the top straight up and remove.

**Remember:** The NetShelter CX2 38U does not have a desktop like the 18U and 24U.

In the case of the 38U CX2 this step is not required.



# NetShelter CX2 Deconstruct

Taking the CX2 apart to place in limited-access locations.

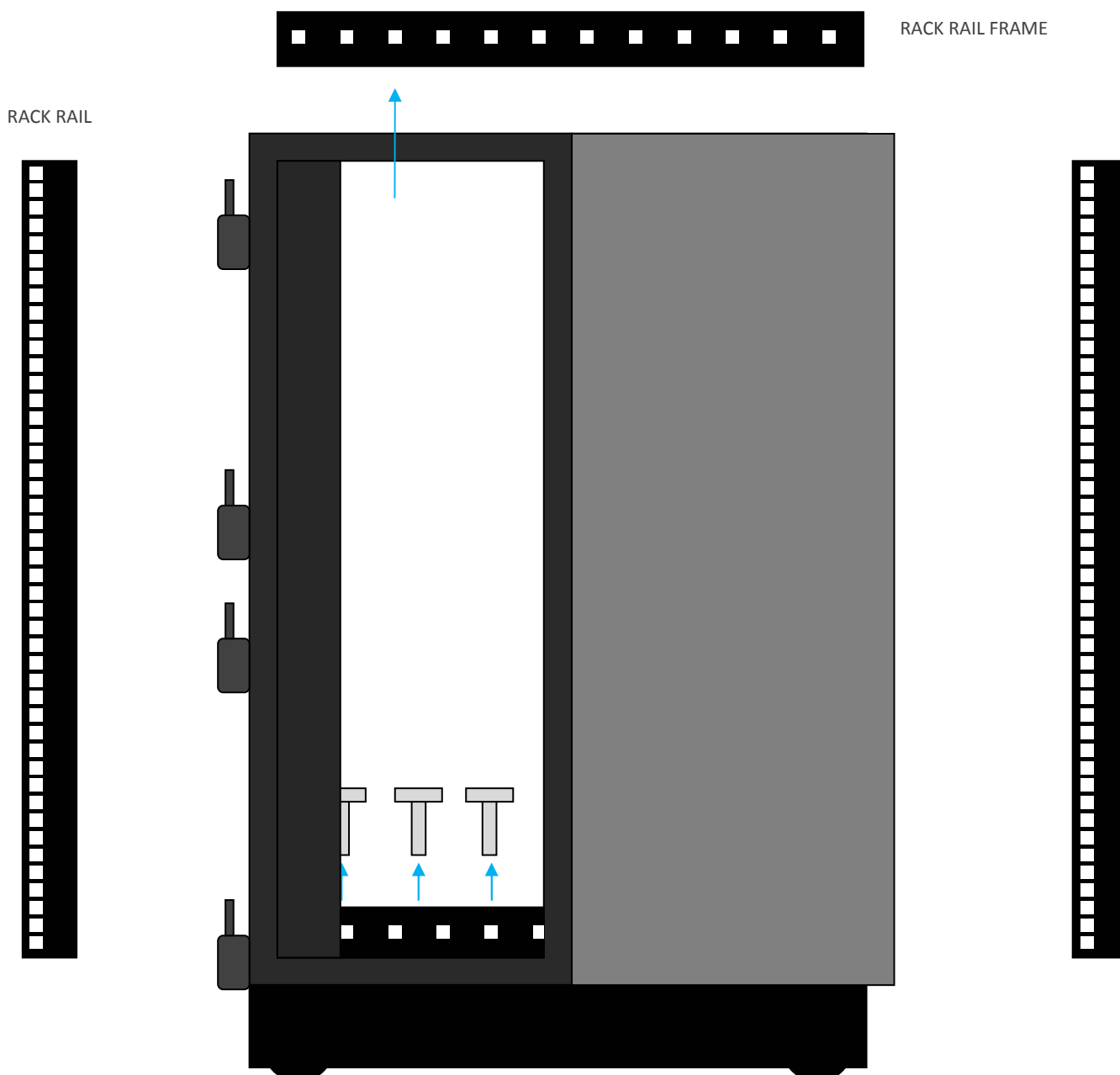


## Step 4 : Rack Rails & Frame

If this more compact CX2 is still not small enough to fit through the narrow space, you can go further.

The Adjustable Rack Rails are held in to the Rack Rail Frame, and both must be removed. The 4 vertical Rack Rails can be removed by undoing the single bolt at top & bottom in each.

The Rack Rail Frame is bolted in to the base & top. Undo all bolts to release.



# NetShelter CX2 Deconstruct

Taking the CX2 apart to place in limited-access locations.



## Step 5 : Separate the chassis rear from the chassis front.

With the Rack Rail Frames removed, you can now split the CX2 Chassis in to two body sections & one base.

Undo the screws holding the chassis body to the base underneath. Then, undo the bolts holding the two chassis parts together.

### Important Notes:

Re-assembly should follow these steps in reverse order

Always make sure to have 2 persons carrying out all operations

Put removed components away safely until ready to re-assemble

