

How to upload - copy PowerChute Network Shutdown installation files to VMware VMA from a PC

First download the install files from APC.com to your PC.

<http://www.apc.com/products/family/index.cfm?id=127>

The screenshot shows the APC.com website with the PowerChute Network Shutdown product page. The browser address bar shows the URL www.apc.com/products/family/index.cfm?id=127. The page features the APC logo, navigation tabs for Solutions, Products and Services, Support, Your Business, and Company. A breadcrumb trail indicates the current location: Home > Products > Uninterruptible Power Supply (UPS) > UPS Management > PowerChute Network Shutdown. The main heading is "PowerChute® Network Shutdown", with a note that it is compatible with APC UPS Network Management Cards and provides a reliable network-based shutdown of multiple servers. A "Product Category" sidebar lists various options, with "PowerChute Network Shutdown" selected. A central section lists resources like Model Information, Application Notes, and Frequently Asked Questions. To the right, there is a graphic of the software interface. Below this, a paragraph describes the software's functionality. A "Model List" table is provided at the bottom, listing two versions of the software with their part numbers and download links. A footer contains navigation links and copyright information.

PowerChute Network Shutdown

(Compatible with APC UPS Network Management Cards)
Reliable network-based shutdown of multiple servers.

Product Category

- Computer and Peripheral (2)
- Network and Server (3)
- Data Center and Facility 3 Phase (11)
- UPS Management
 - PowerChute Personal Edition
 - PowerChute Business Edition
 - PowerChute Network Shutdown**
 - UPS Network Management Cards
 - Additional Management Cards and Options
 - Interface Cables
 - Battery Management

[Return to Uninterruptible Power Supply \(UPS\)](#)

Model List

Products	Part Number	Price **	
PowerChute® Network Shutdown v 2.2.4	SFPCNS224	N/A	Free Download
PowerChute Network Shutdown v3.0.0	SFPCNS300	N/A	Free Download

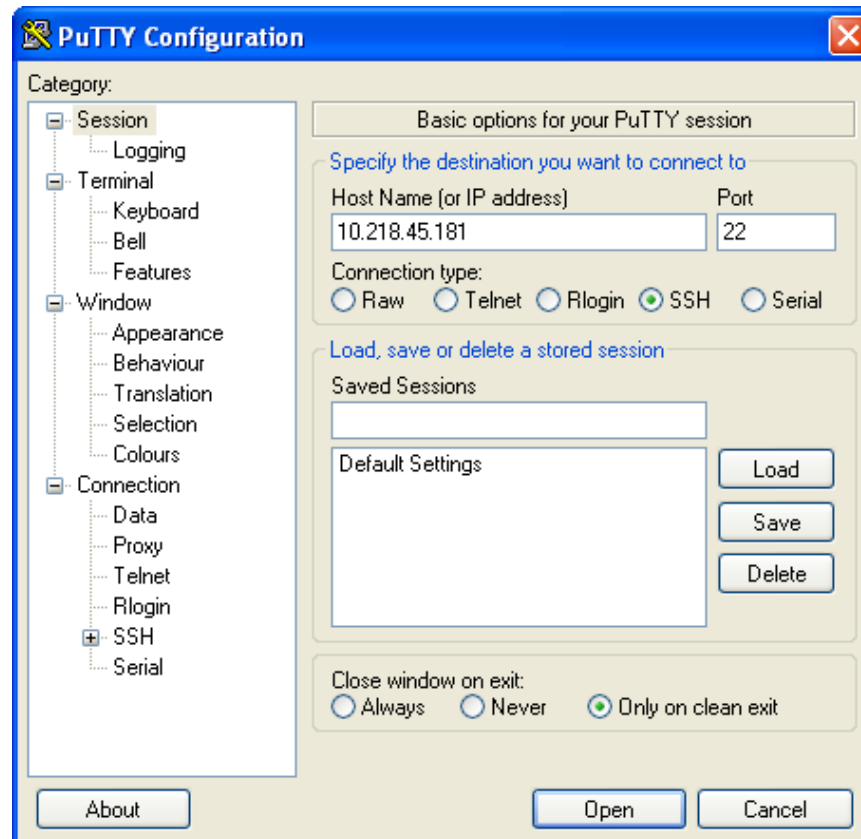
** Except where noted, all prices are Estimated Resale Price (ERP) - Without Tax/VAT. Pricing in other locations and sites may vary.

Home | Solutions | Products and Services | Support | Your Business | Company

©APC by Schneider Electric | Privacy Policy | Contact

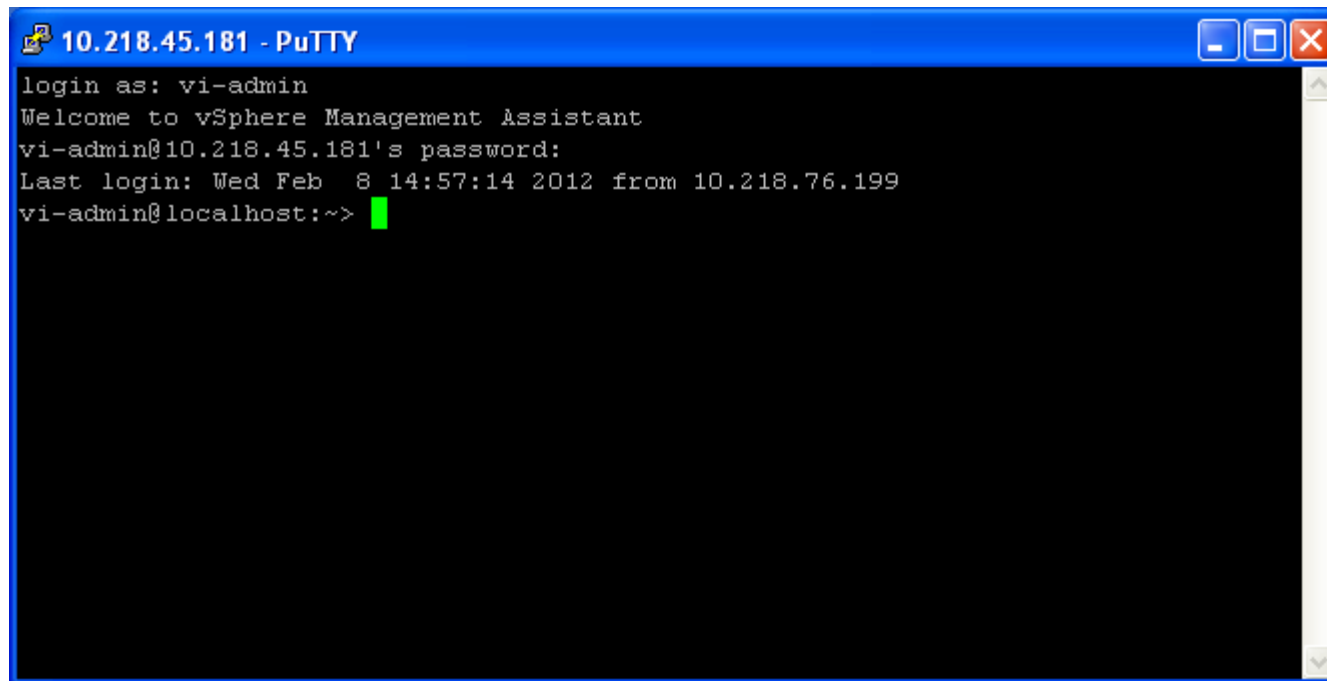
Now log into the vMA using a utility like PUTTY or using the VMware vSphere Client.

Note: If you need assistance installing and configuring vMA 5 please review Kbase FA159777 or review this VMware support video <http://www.youtube.com/watch?v=J4KdUoToCxM>



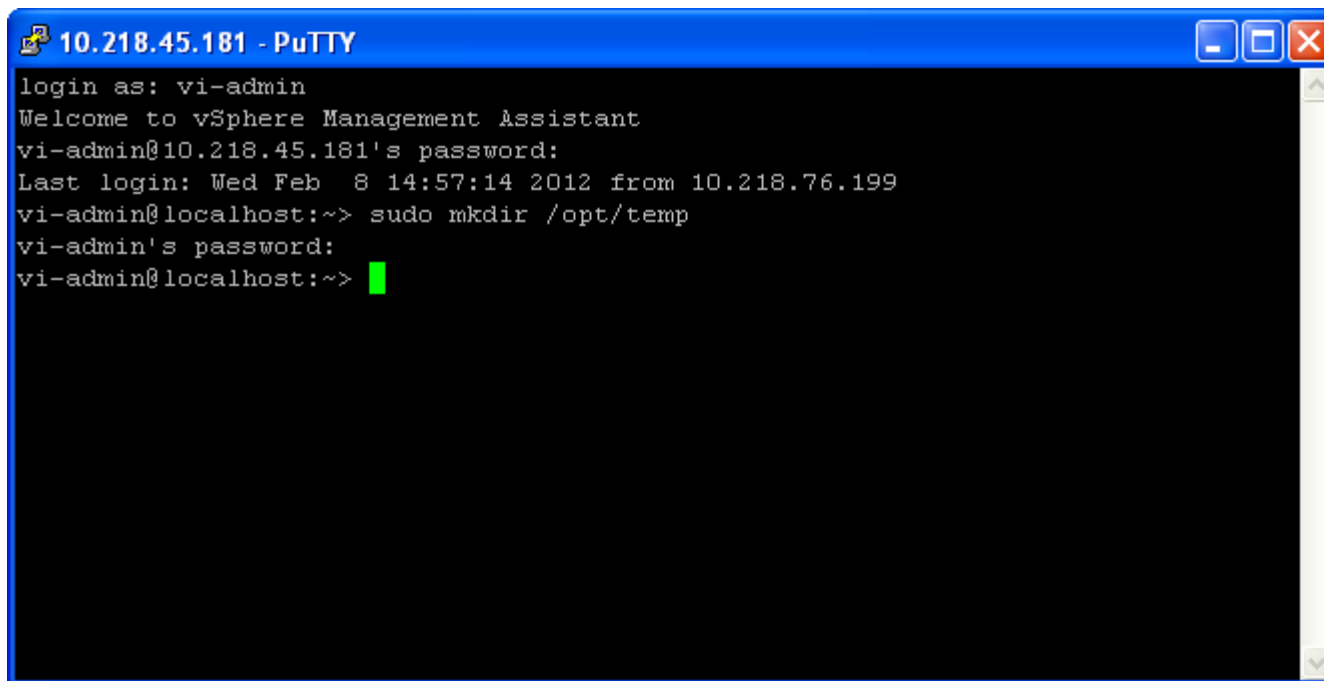
For this demo we have launched PUTTY and entered the ipaddress of the VMware vMA and port 22 should be selected.

When logging in you need to provide a user name and password
Default user is vi-admin



```
10.218.45.181 - PuTTY
login as: vi-admin
Welcome to vSphere Management Assistant
vi-admin@10.218.45.181's password:
Last login: Wed Feb  8 14:57:14 2012 from 10.218.76.199
vi-admin@localhost:~>
```

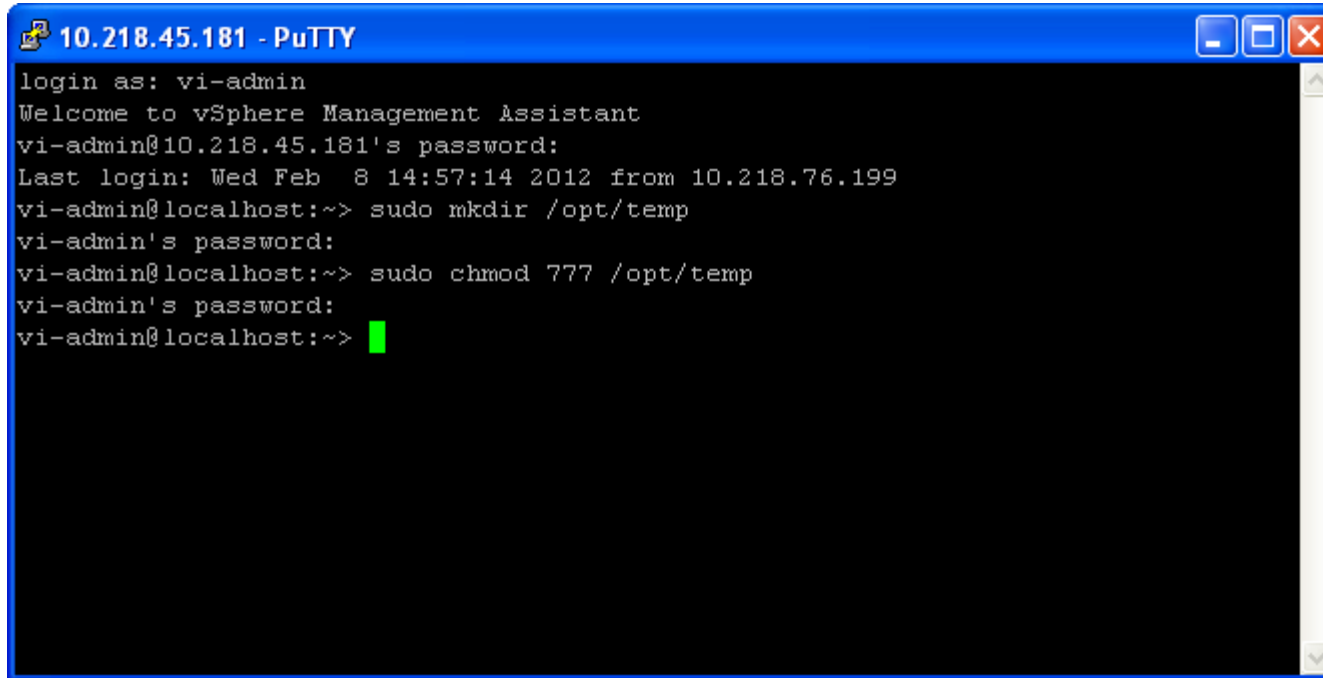
Next you need to create a temp directory
You may be asked to enter the root password



```
10.218.45.181 - PuTTY
login as: vi-admin
Welcome to vSphere Management Assistant
vi-admin@10.218.45.181's password:
Last login: Wed Feb  8 14:57:14 2012 from 10.218.76.199
vi-admin@localhost:~> sudo mkdir /opt/temp
vi-admin's password:
vi-admin@localhost:~> █
```

In this example the temp directory was created in /opt
The command used is
`sudo mkdir /opt/temp`

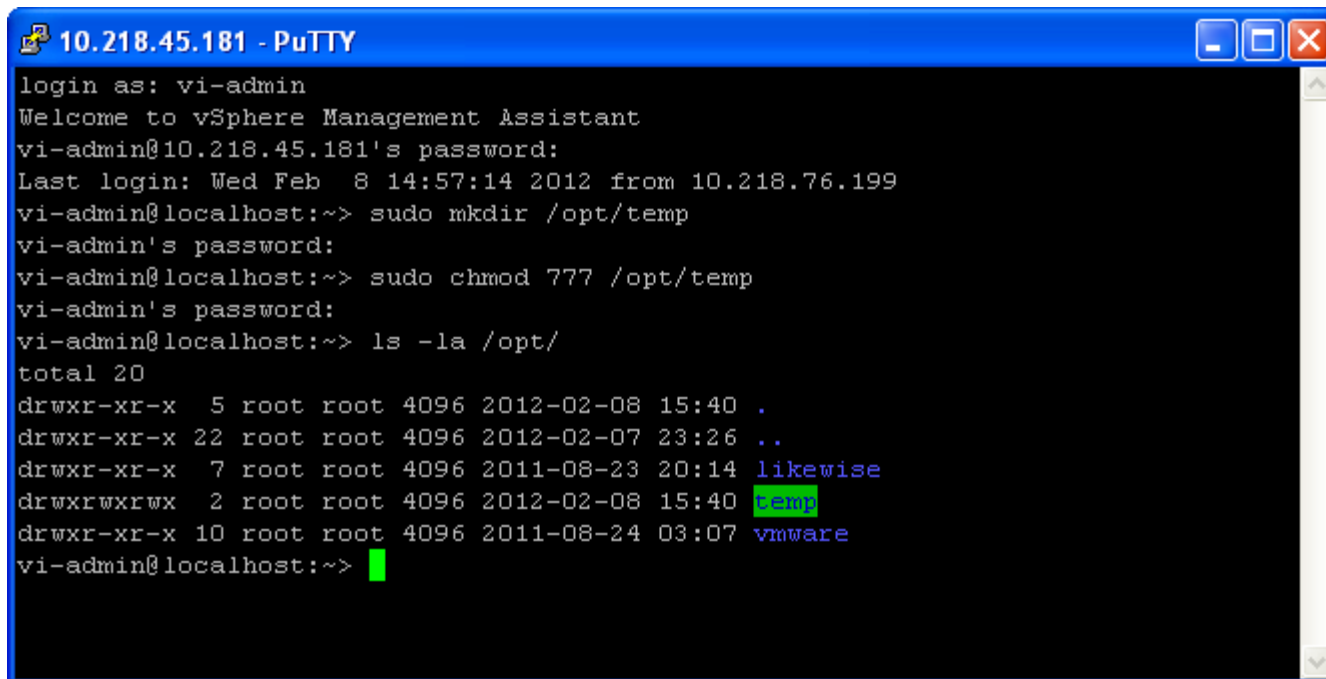
Next you need to change the permissions of the temp directory



```
10.218.45.181 - PuTTY
login as: vi-admin
Welcome to vSphere Management Assistant
vi-admin@10.218.45.181's password:
Last login: Wed Feb  8 14:57:14 2012 from 10.218.76.199
vi-admin@localhost:~> sudo mkdir /opt/temp
vi-admin's password:
vi-admin@localhost:~> sudo chmod 777 /opt/temp
vi-admin's password:
vi-admin@localhost:~> █
```

The command used is
`sudo chmod 777 /opt/temp`

To check the permissions on the temp directory



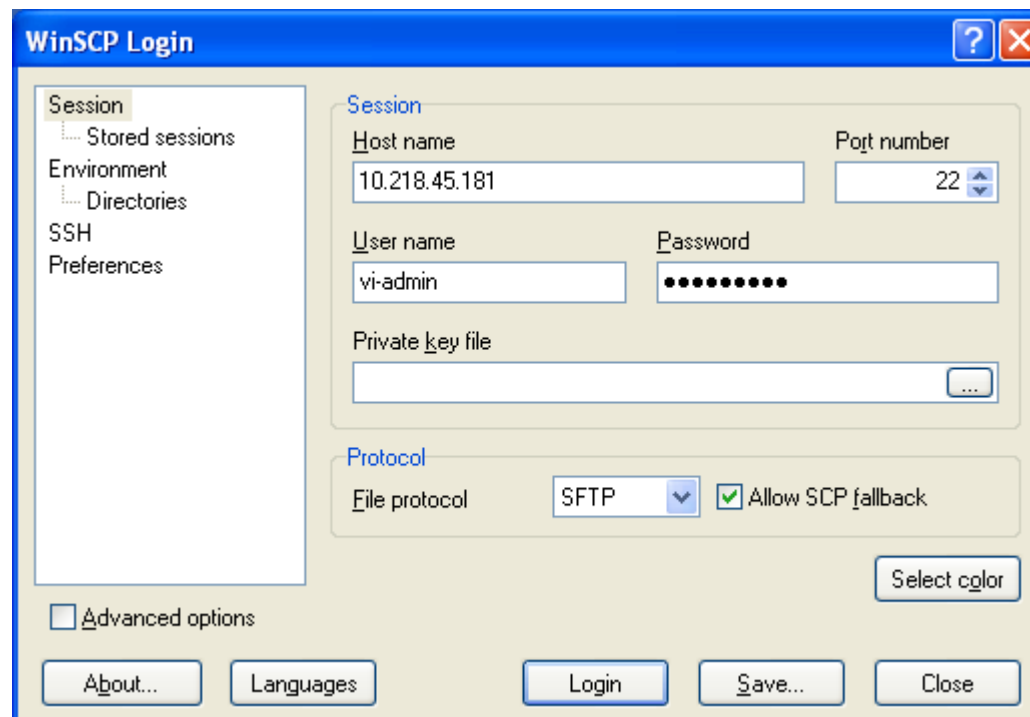
```
10.218.45.181 - PuTTY
login as: vi-admin
Welcome to vSphere Management Assistant
vi-admin@10.218.45.181's password:
Last login: Wed Feb  8 14:57:14 2012 from 10.218.76.199
vi-admin@localhost:~> sudo mkdir /opt/temp
vi-admin's password:
vi-admin@localhost:~> sudo chmod 777 /opt/temp
vi-admin's password:
vi-admin@localhost:~> ls -la /opt/
total 20
drwxr-xr-x  5 root root 4096 2012-02-08 15:40 .
drwxr-xr-x 22 root root 4096 2012-02-07 23:26 ..
drwxr-xr-x  7 root root 4096 2011-08-23 20:14 likewise
drwxrwxrwx  2 root root 4096 2012-02-08 15:40 temp
drwxr-xr-x 10 root root 4096 2011-08-24 03:07 vmware
vi-admin@localhost:~>
```

The command used is

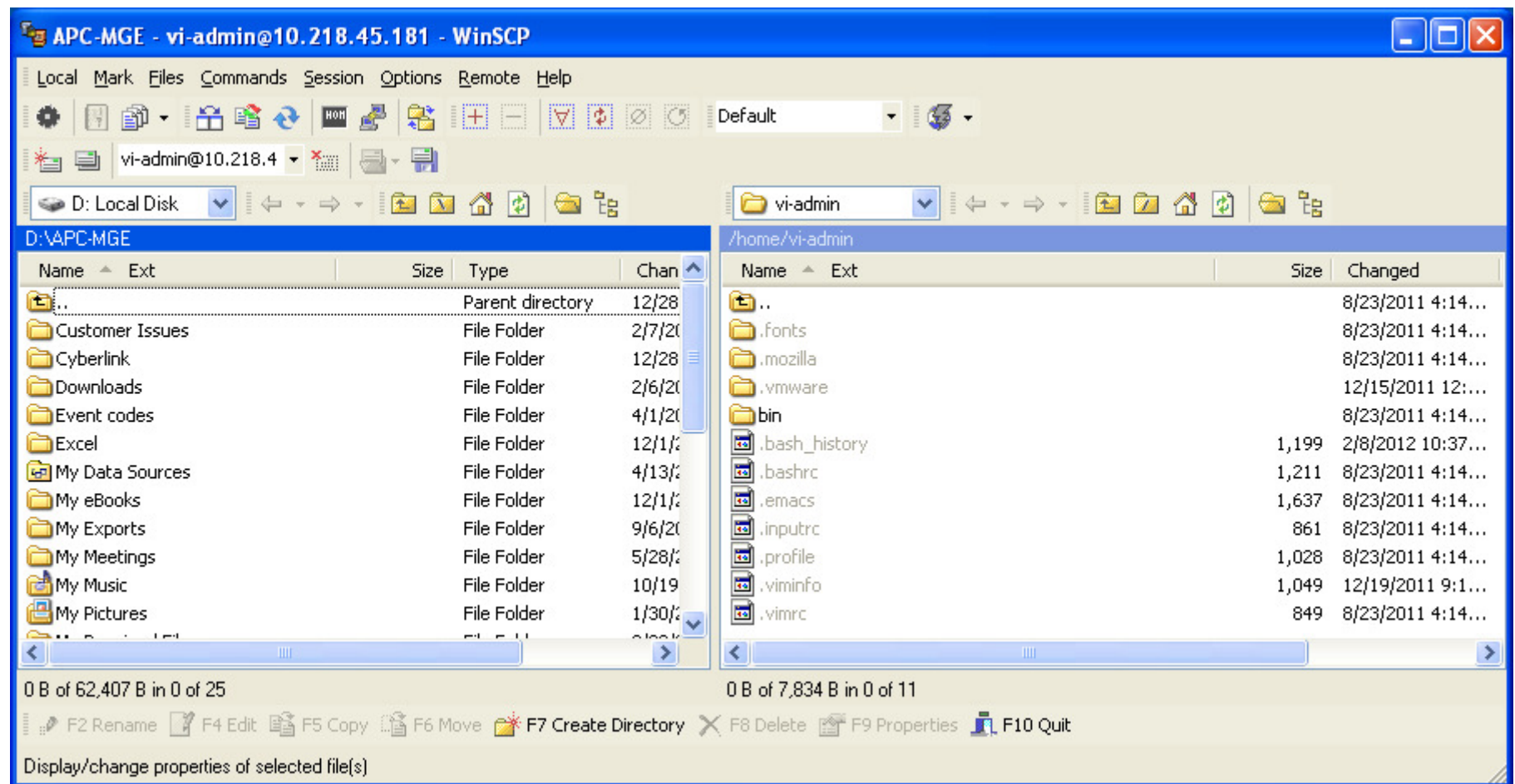
ls -la /opt

You will see that the permissions of temp are now rwxrwxrwx

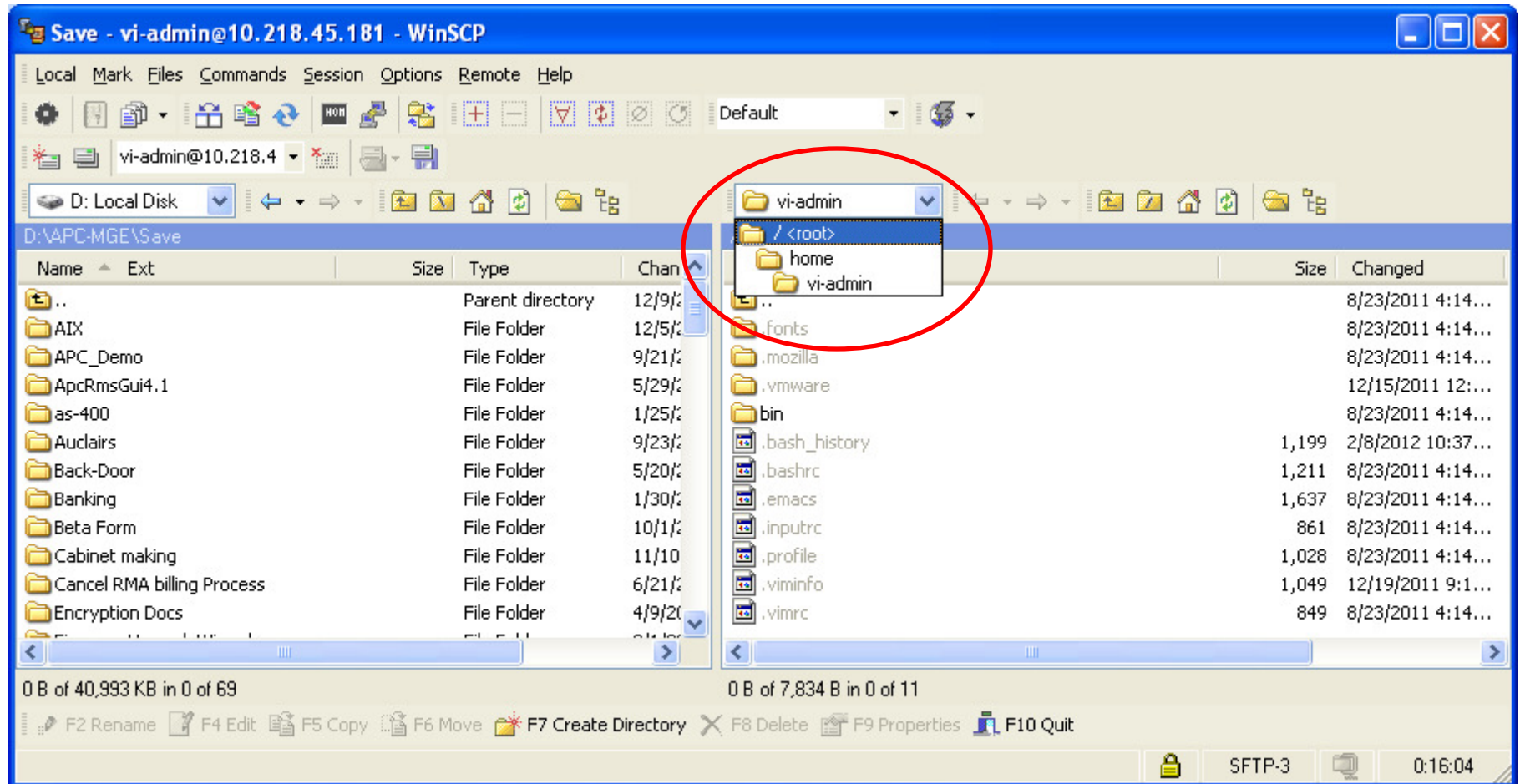
You now need to transfer the PCNS installation files from your PC to the vMA. To do this you can use FTP from the command prompt or use a FTP utility like WinSCP shown below.



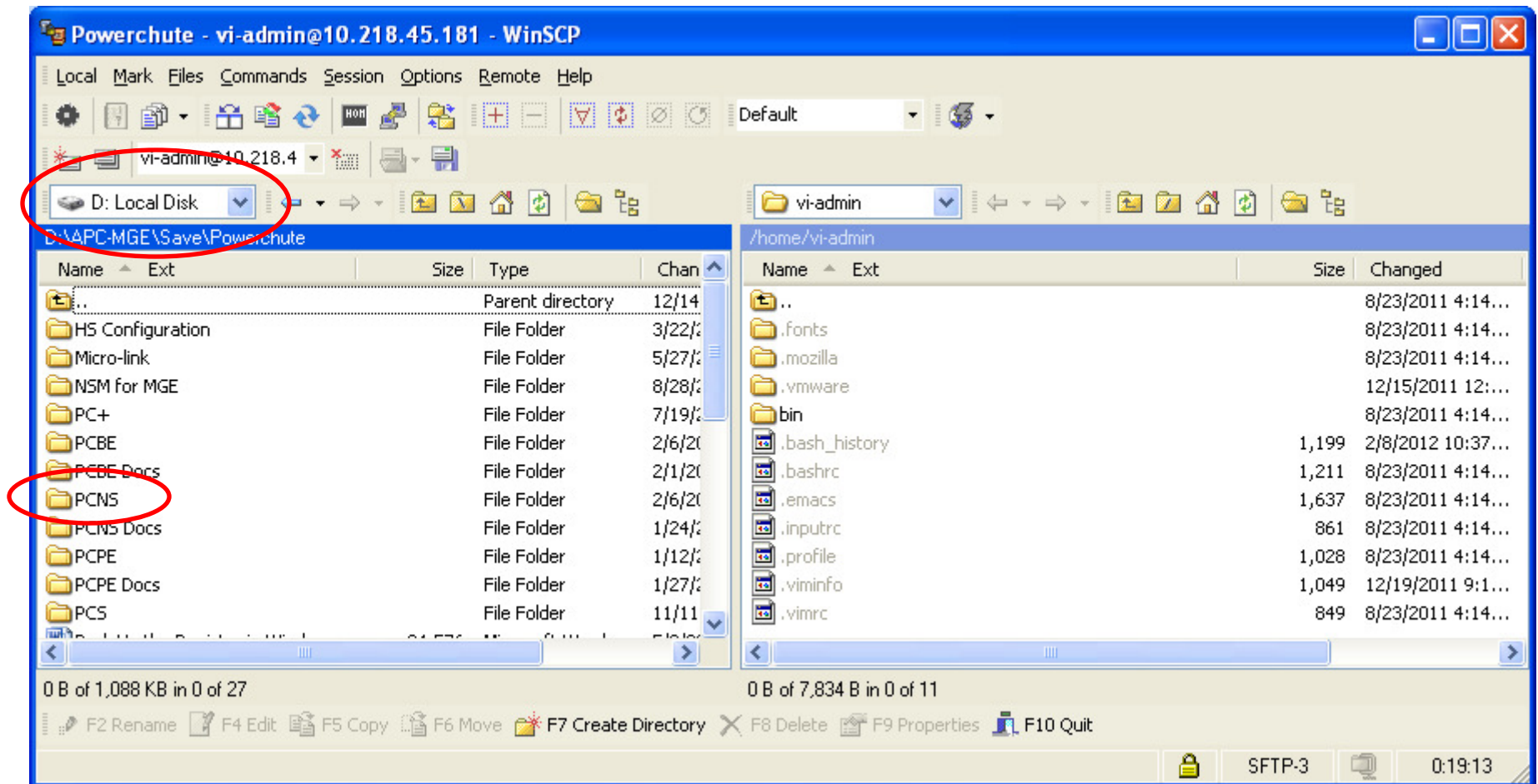
When WinSCP launches you will need to navigate to the folder on the PC that holds the PCNS files and navigate to the temp directory.



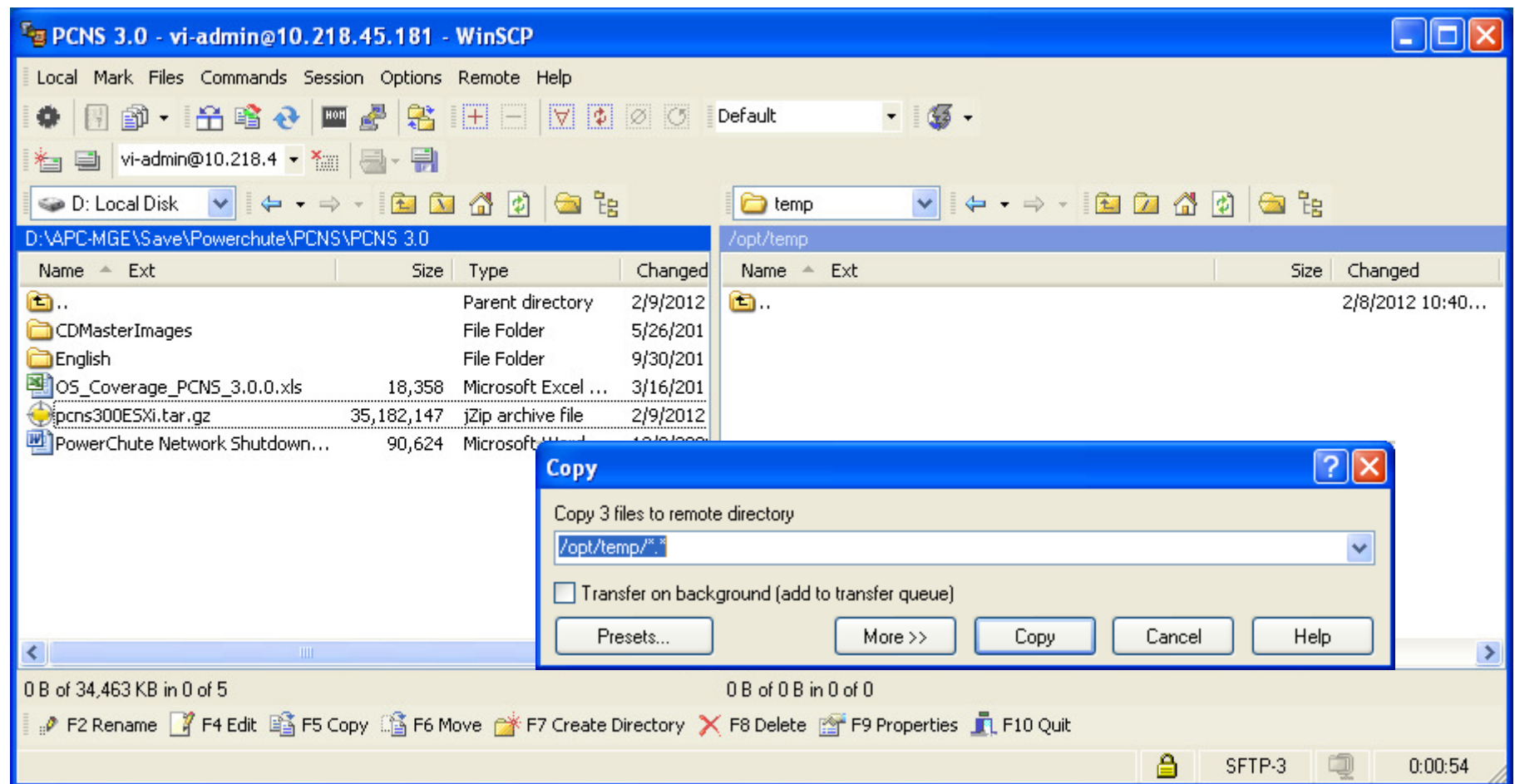
To navigate to the temp directory use the pull down and go to / (root) then select opt and then temp.



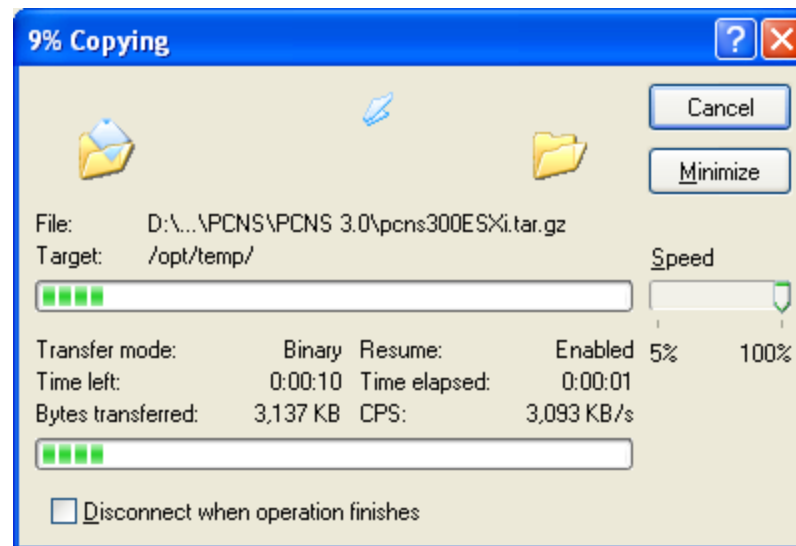
To navigate to the folder that PCNS is stored in use the pull down select the drive and then select the proper folder.



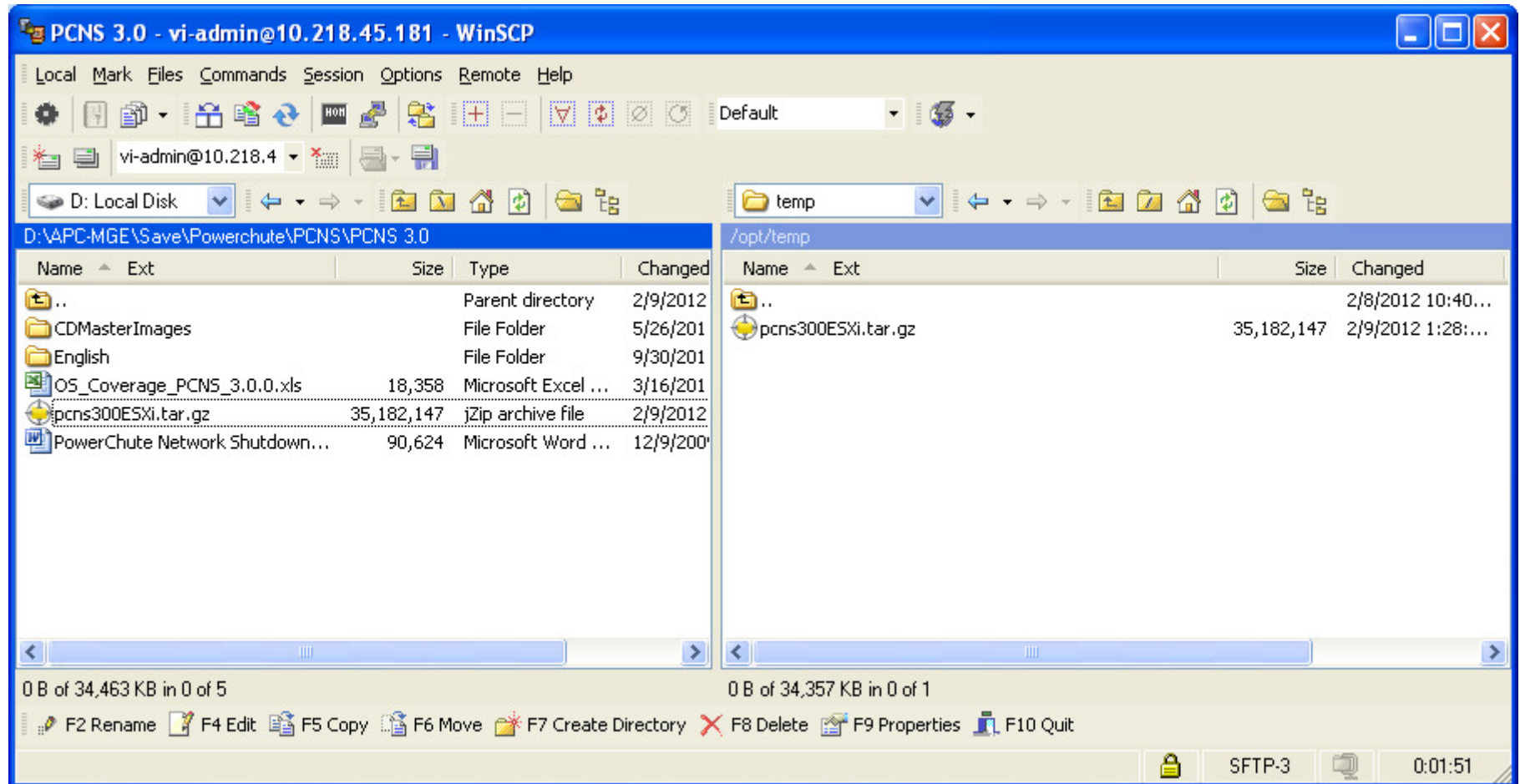
Select the files you want to transfer and drag them to the temp directory on the right. A window will pop up asking if you want to copy. Select copy.



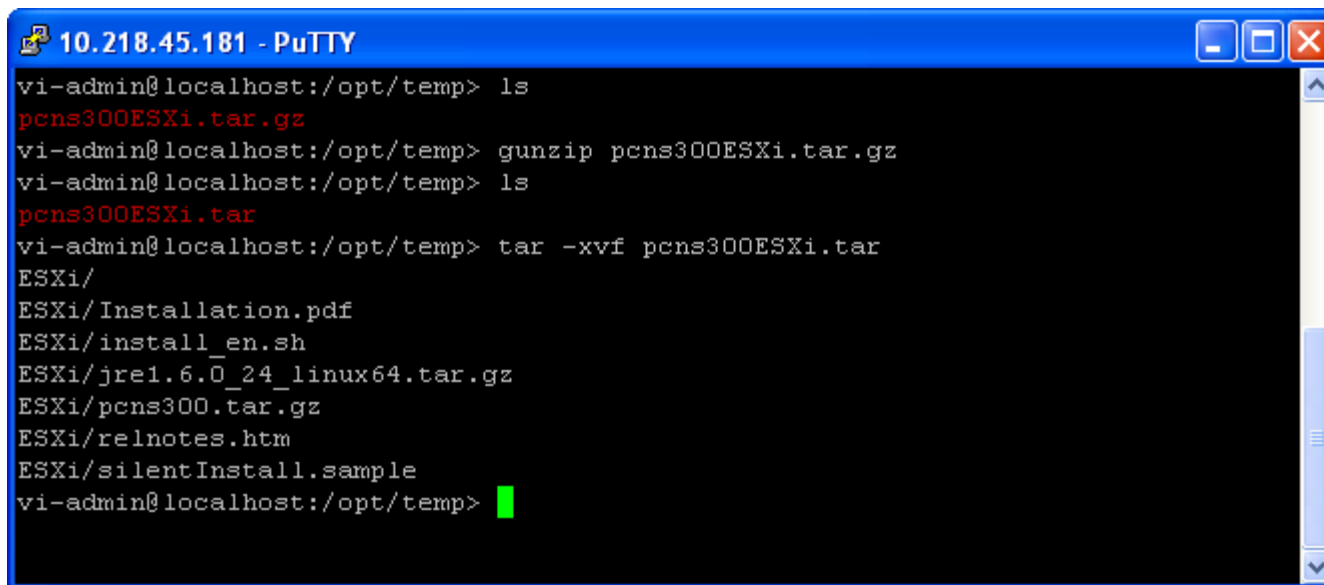
Next you will see a window showing the files being copied.



Then you will see that the file have been copied. In this case we copied pcns300ESXi.tar.gz



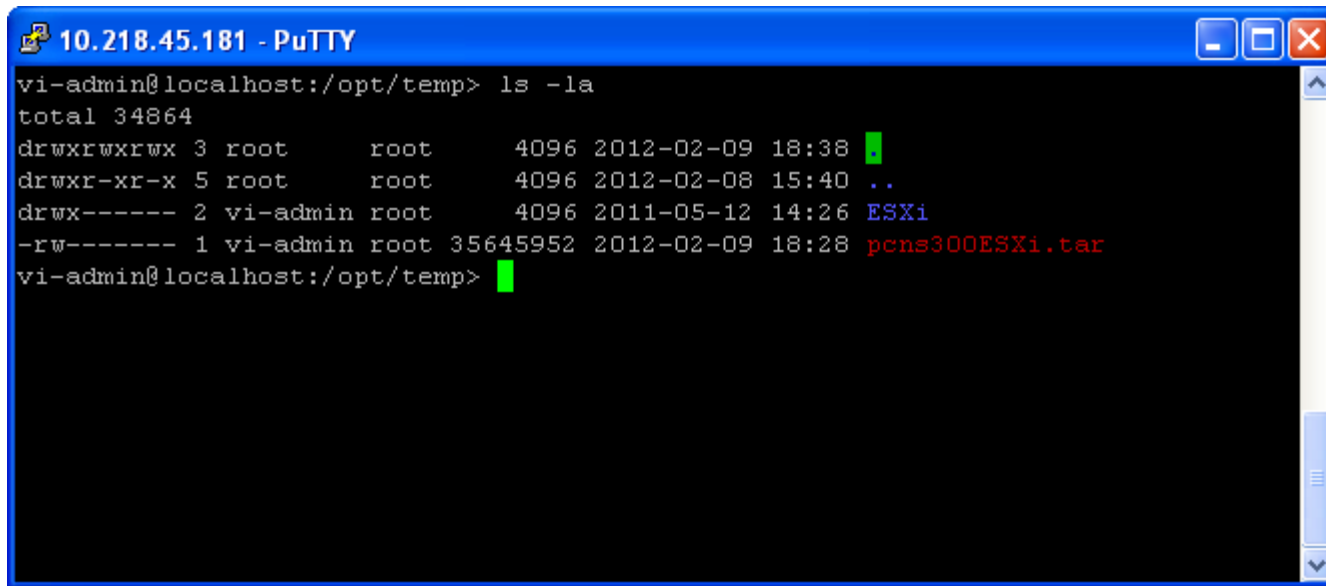
Next using PUTTY you need to change directory to temp and then uncompress the file.

A screenshot of a PuTTY terminal window titled "10.218.45.181 - PuTTY". The terminal shows a user named "vi-admin" at "localhost" in the directory "/opt/temp". The user runs the command "ls", which lists "pcns300ESXi.tar.gz". Then, the user runs "gunzip pcns300ESXi.tar.gz", followed by another "ls" command, which lists "pcns300ESXi.tar". Finally, the user runs "tar -xvf pcns300ESXi.tar", which lists the contents of the tar archive: "ESXi/", "ESXi/Installation.pdf", "ESXi/install_en.sh", "ESXi/jre1.6.0_24_linux64.tar.gz", "ESXi/pcns300.tar.gz", "ESXi/relnotes.htm", and "ESXi/silentInstall.sample". The prompt "vi-admin@localhost:/opt/temp>" is followed by a green cursor.

```
10.218.45.181 - PuTTY
vi-admin@localhost:/opt/temp> ls
pcns300ESXi.tar.gz
vi-admin@localhost:/opt/temp> gunzip pcns300ESXi.tar.gz
vi-admin@localhost:/opt/temp> ls
pcns300ESXi.tar
vi-admin@localhost:/opt/temp> tar -xvf pcns300ESXi.tar
ESXi/
ESXi/Installation.pdf
ESXi/install_en.sh
ESXi/jre1.6.0_24_linux64.tar.gz
ESXi/pcns300.tar.gz
ESXi/relnotes.htm
ESXi/silentInstall.sample
vi-admin@localhost:/opt/temp>
```

The commands are
gunzip pcns300ESXi.tar.gz
Then
tar -xvf pcns300ESXi.tar

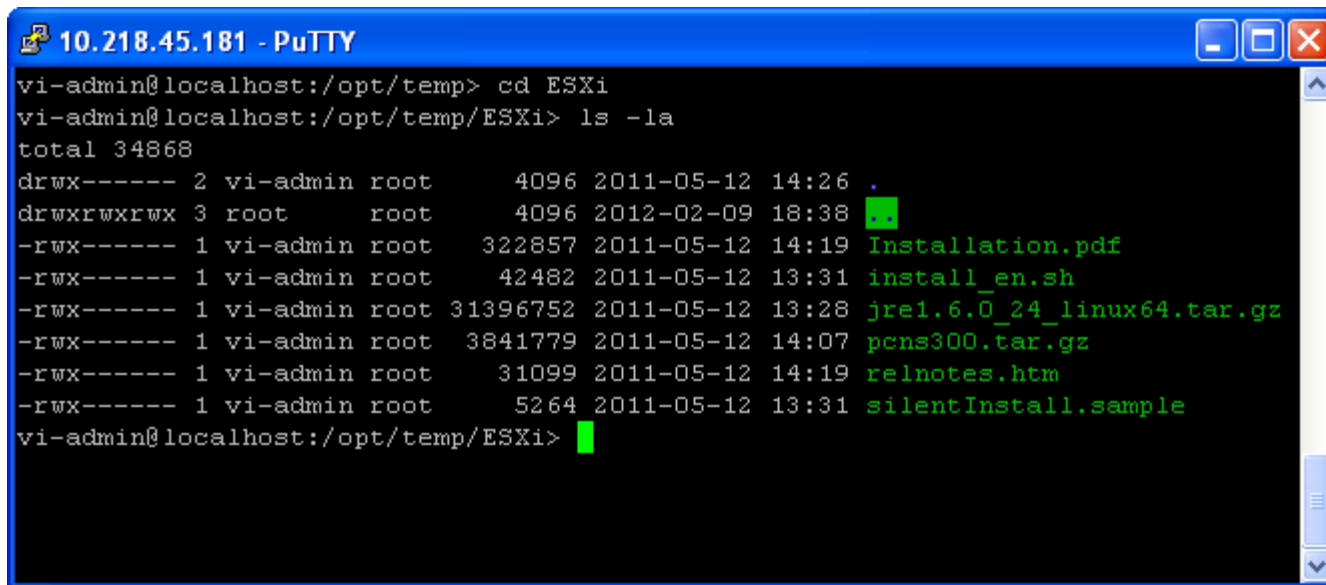
If installing PCNS you will now have a new directory in temp named ESXi



```
10.218.45.181 - PuTTY
vi-admin@localhost:/opt/temp> ls -la
total 34864
drwxrwxrwx 3 root      root      4096 2012-02-09 18:38 .
drwxr-xr-x 5 root      root      4096 2012-02-08 15:40 ..
drwx----- 2 vi-admin root      4096 2011-05-12 14:26 ESXi
-rw----- 1 vi-admin root 35645952 2012-02-09 18:28 pcns300ESXi.tar
vi-admin@localhost:/opt/temp>
```

Change directory to ESXi the command is
cd ESXi

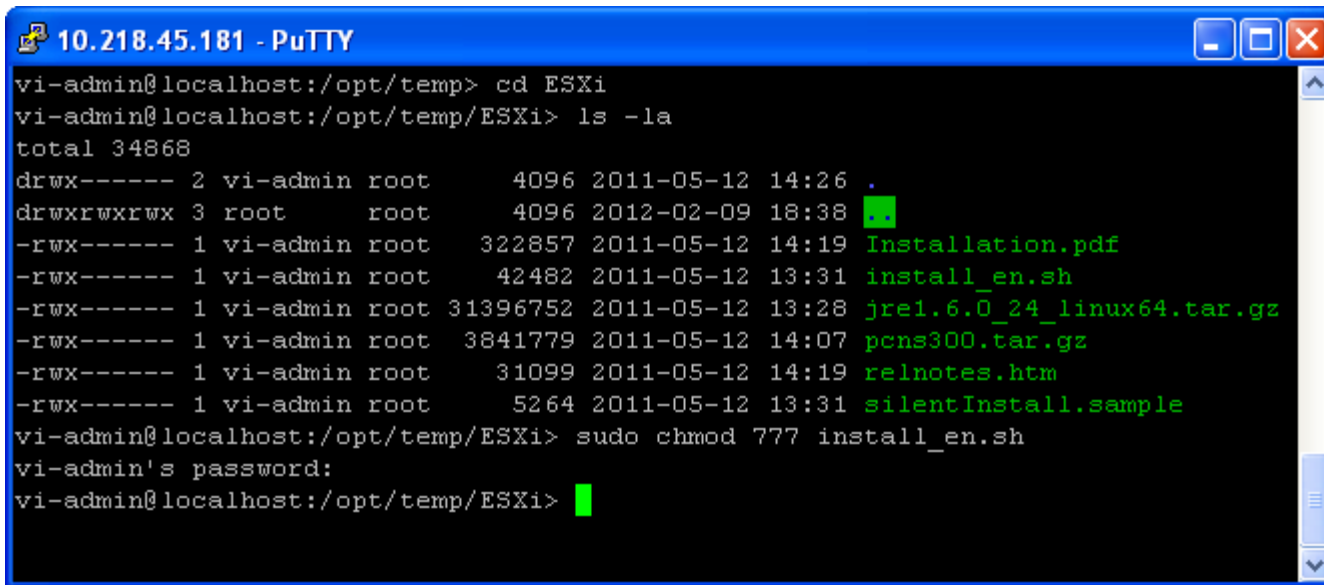
List the contents of the ESXi directory



```
10.218.45.181 - PuTTY
vi-admin@localhost:/opt/temp> cd ESXi
vi-admin@localhost:/opt/temp/ESXi> ls -la
total 34868
drwx----- 2 vi-admin root      4096 2011-05-12 14:26 .
drwxrwxrwx 3 root      root      4096 2012-02-09 18:38 ..
-rwx----- 1 vi-admin root    322857 2011-05-12 14:19 Installation.pdf
-rwx----- 1 vi-admin root     42482 2011-05-12 13:31 install_en.sh
-rwx----- 1 vi-admin root  31396752 2011-05-12 13:28 jre1.6.0_24_linux64.tar.gz
-rwx----- 1 vi-admin root   3841779 2011-05-12 14:07 pcns300.tar.gz
-rwx----- 1 vi-admin root     31099 2011-05-12 14:19 relnotes.htm
-rwx----- 1 vi-admin root      5264 2011-05-12 13:31 silentInstall.sample
vi-admin@localhost:/opt/temp/ESXi>
```

The command is
ls -la

Next you need to change the permissions of the installation file.

A screenshot of a PuTTY terminal window titled "10.218.45.181 - PuTTY". The terminal shows a user named "vi-admin" at a "localhost" prompt. The user navigates to the directory "/opt/temp/ESXi" and runs the command "ls -la". The output shows a list of files with their permissions, owners, and sizes. The file "install_en.sh" is highlighted in green. The user then runs the command "sudo chmod 777 install_en.sh" and enters their password. The prompt returns to the user's shell.

```
vi-admin@localhost:/opt/temp> cd ESXi
vi-admin@localhost:/opt/temp/ESXi> ls -la
total 34868
drwx----- 2 vi-admin root      4096 2011-05-12 14:26 .
drwxrwxrwx 3 root      root      4096 2012-02-09 18:38 ..
-rwx----- 1 vi-admin root    322857 2011-05-12 14:19 Installation.pdf
-rwx----- 1 vi-admin root     42482 2011-05-12 13:31 install_en.sh
-rwx----- 1 vi-admin root  31396752 2011-05-12 13:28 jre1.6.0_24_linux64.tar.gz
-rwx----- 1 vi-admin root  3841779 2011-05-12 14:07 pcns300.tar.gz
-rwx----- 1 vi-admin root     31099 2011-05-12 14:19 relnotes.htm
-rwx----- 1 vi-admin root      5264 2011-05-12 13:31 silentInstall.sample
vi-admin@localhost:/opt/temp/ESXi> sudo chmod 777 install_en.sh
vi-admin's password:
vi-admin@localhost:/opt/temp/ESXi>
```

The command is

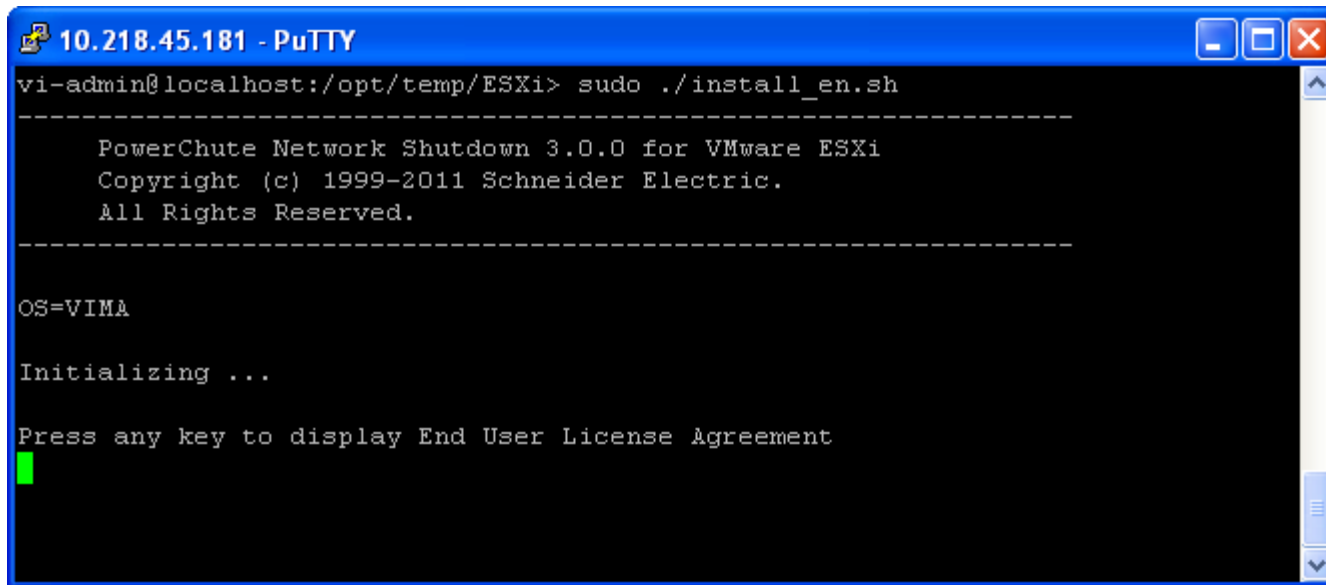
`sudo chmod 777 install_en.sh`

To check the permissions the command is

`ls -la`

You will see that the permissions are now `rwxrwxrwx`

You are now ready to install PCNS on the vMA



```
10.218.45.181 - PuTTY
vi-admin@localhost:/opt/temp/ESXi> sudo ./install_en.sh
-----
PowerChute Network Shutdown 3.0.0 for VMware ESXi
Copyright (c) 1999-2011 Schneider Electric.
All Rights Reserved.
-----

OS=VIMA

Initializing ...

Press any key to display End User License Agreement
█
```

The command used is

`sudo ./install_en.sh`

Further information on the installation PCNS can be found in Kbase articles

FA159780 Install PowerChute Network Shutdown 3.0.1 on ESXi 5.0 with vMA 5.0

FA159765 Installation of PowerChute Network Shutdown version 3.0 on VMware ESXi - vMA 4.0, 4.1

Thank you.

