

## Power Chute Network Shutdown (PCNS) 설치 및 셧다운 시간설정 매뉴얼

SNMP 카드 (AP9630,31)에 IP 할당을 마치셨으면, 이제 셧다운을 원하시는 각 서버에 관리 프로그램인 Power Chute Network Shutdown 을 설치하셔야 합니다. 설치방법은 아래 순서를 따라 주십시오.

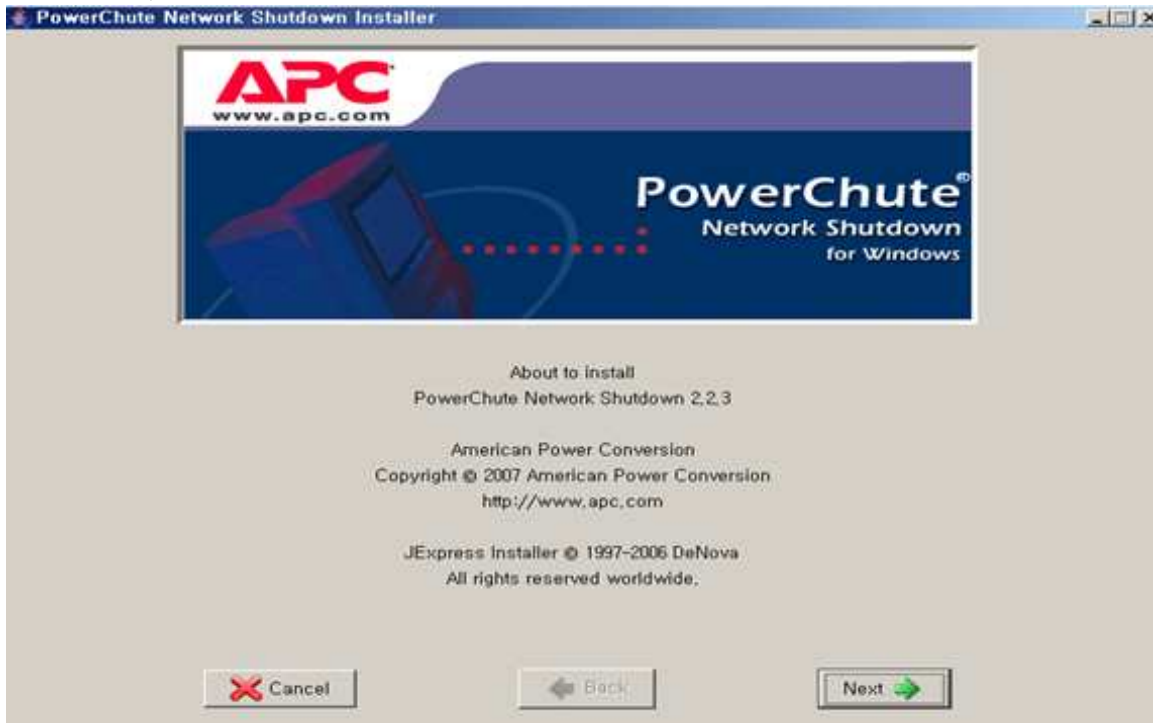
\* IP 할당법은 따로 첨부된 가이드를 참조해 주십시오.

### PCNS 설치하기

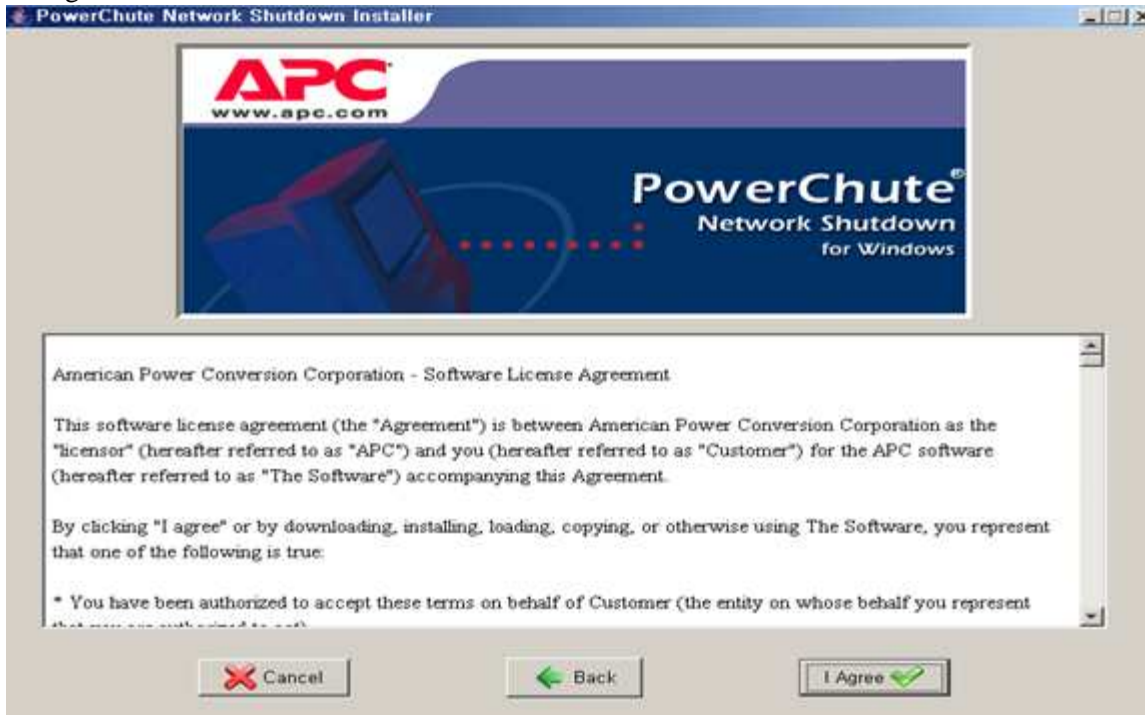
1. Setup 파일을 실행시킵니다.



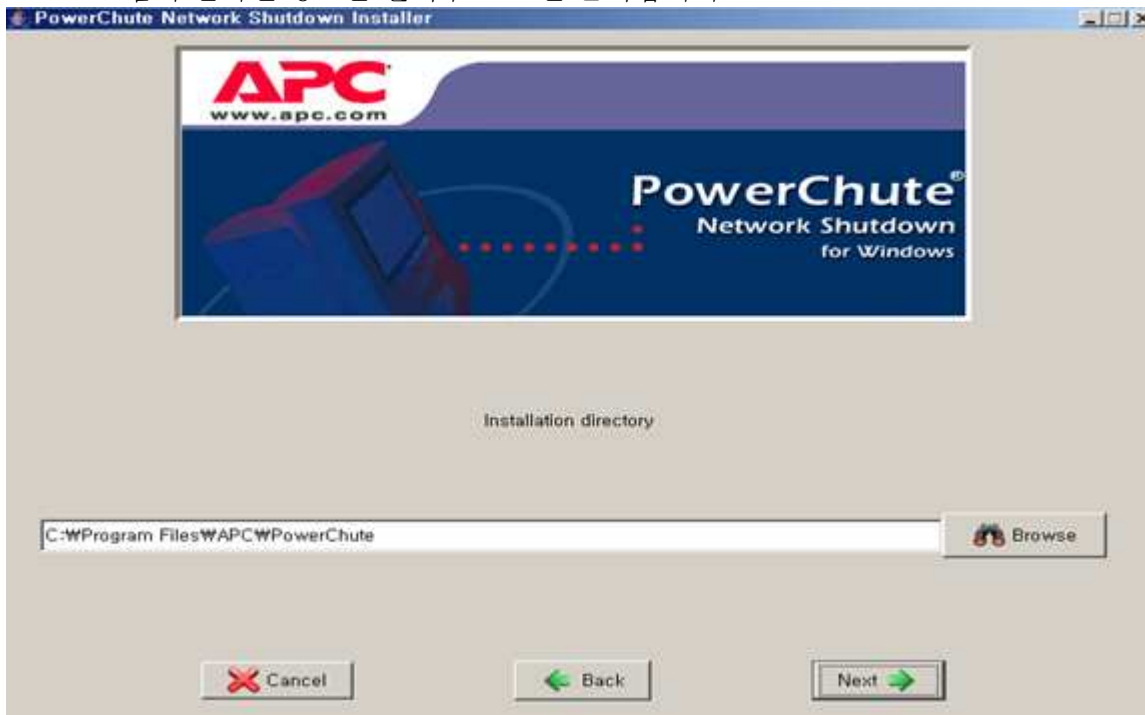
2. Next 클릭



3. I agree 클릭



4. 프로그램이 설치될 경로를 선택후 Next 를 클릭합니다.



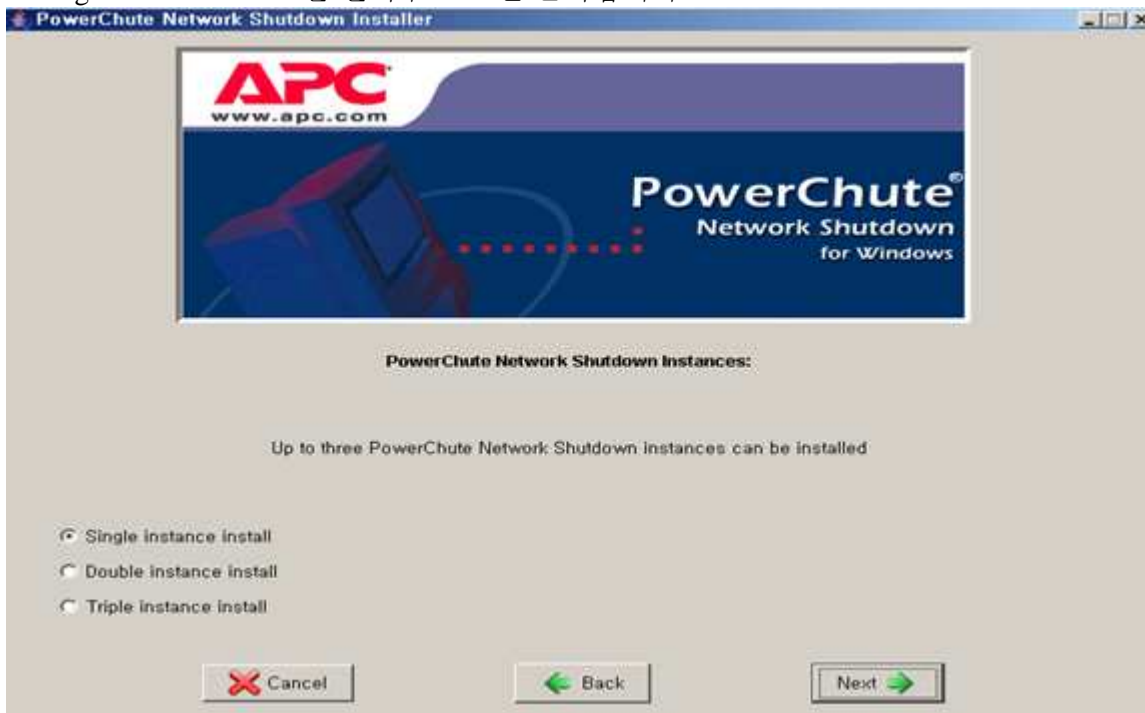


Legendary Reliability™

5. Custom Install 을 선택후 Next 를 클릭합니다.



6. Single Instance install 을 선택후 Next 를 클릭합니다.



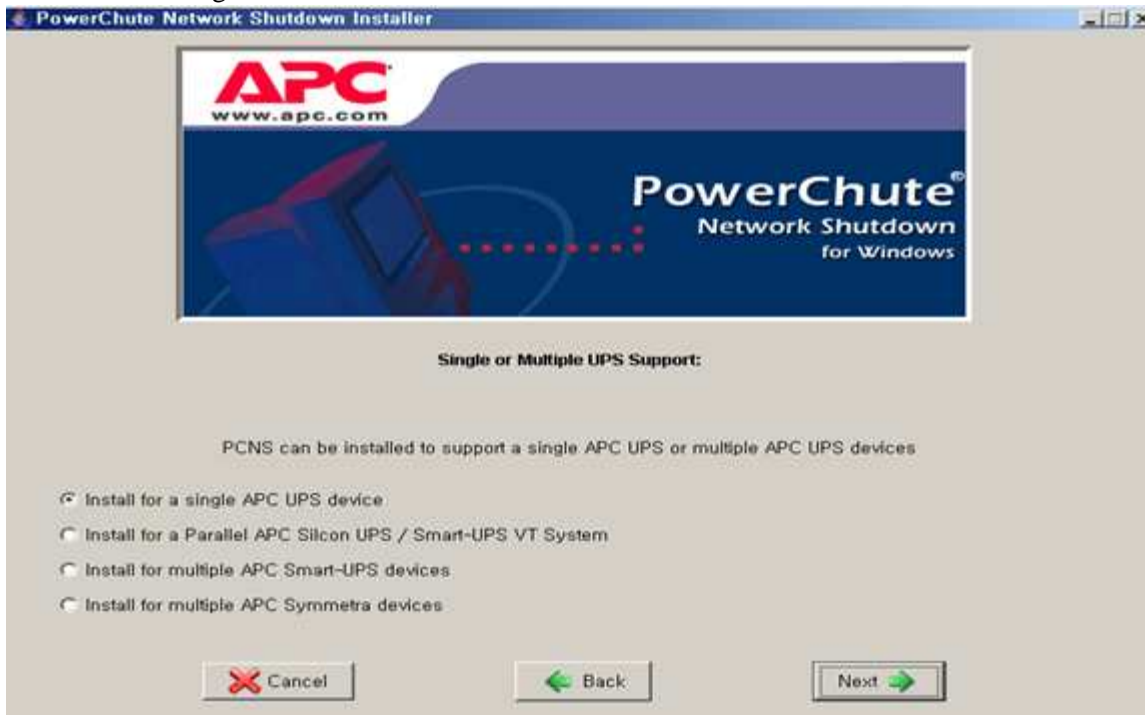
APC Korea

TEL : 02)501-6492 FAX : 02)501-6369 Web : [www.apc.com](http://www.apc.com) Service Call Center : 02)3775-0884/0994



Legendary Reliability™

7. Install for a single APC UPS device 선택후 Next 를 클릭합니다.



8. SNMP 카드의 IP 주소를 입력한후 Next 를 클릭합니다.



APC Korea

TEL : 02)501-6492 FAX : 02)501-6369 Web : [www.apc.com](http://www.apc.com) Service Call Center : 02)3775-0884/0994

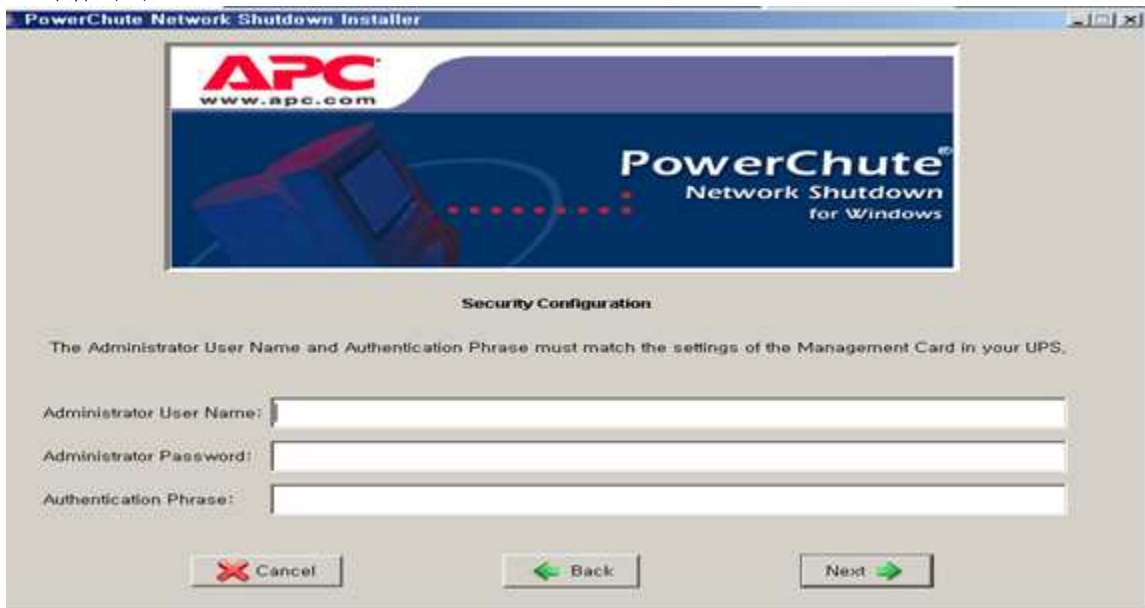


Legendary Reliability™

9. 웹창을 여시고, SNMP 카드에 접속하여 UPS -> Power Chute -> Configuration 에 들어가서, Authentication Phrase 의 인증키를 입력합니다. 임의의 숫자 15 개를 입력합니다.  
(예: 123456789012345)



10. 나중에 잃어버리지 않도록 User name 과 password 는 apc / apc 로 입력하고 세번째 Authentication Phrase 에는 9 번과정에서 입력했던 숫자 인증키를 입력후 Next 를 클릭합니다.







Legendary Reliability™

11. 인증부분이 성공적으로 이루어지면, 아래 화면이 나타납니다. 통신설정을 완료하기까지 2~3 분가량 시간이 소요됩니다.



12. 아래 화면이 보이면 Next 버튼을 눌러 설치를 완료합니다.



APC Korea

TEL : 02)501-6492 FAX : 02)501-6369 Web : [www.apc.com](http://www.apc.com) Service Call Center : 02)3775-0884/0994

13. 설치완료



PCNS 셋다운 시간설정하기

1. 설치한 PCNS 에 접속한 후, Configure Events 메뉴로 들어갑니다. 여러 이벤트 중 UPS: On Battery 이벤트를 찾아서 맨오른쪽 네번째 동그라미를 눌러줍니다

Address <http://127.0.0.1:3052/> Go

|   |  |   |   |   |   |
|---|--|---|---|---|---|
| <b>PowerChute Network Shutdown</b><br>▼ ASPSELND48<br>View Event Log<br><b>Configure Events</b><br>Configure Shutdown<br>Set Up Communications<br>▼ UPS Information<br>Smart-UPS 750<br>Connected Servers<br>► Help<br> | Environment: Humidity Probe 1 Out Of Range               | ✓ | ○ | ○ | ○ |
|   | Environment: Humidity Probe 2 In Range                   | ✓ | ○ | ○ | ○ |
|   | Environment: Humidity Probe 2 Out Of Range               | ✓ | ○ | ○ | ○ |
|   | Environment: Temperature Probe 1 In Range                | ✓ | ○ | ○ | ○ |
|   | Environment: Temperature Probe 1 Out Of Range            | ✓ | ○ | ○ | ○ |
|   | Environment: Temperature Probe 2 In Range                | ✓ | ○ | ○ | ○ |
|   | Environment: Temperature Probe 2 Out Of Range            | ✓ | ○ | ○ | ○ |
|   | Environmental Monitoring Card: Communication Established | ✓ | ○ | ○ | ○ |
|   | Environmental Monitoring Card: Communication Lost        | ✓ | ○ | ○ | ○ |
|   | Input Power: Restored                                    | ✓ | ○ | ○ | ○ |
|   | Runtime: Exceeded  | ✓ | ○ | ○ | ○ |
|   | Runtime: Normal Again                                    | ✓ | ○ | ○ | ○ |
|   | SmartBoost: Activated                                    | ✓ | ○ | ○ | ○ |
|   | SmartTrim: Activated                                     | ✓ | ○ | ○ | ○ |
|   | UPS Overload: Corrected                                  | ✓ | ○ | ○ | ○ |
|   | UPS: On Battery  | ✓ | ○ | ○ | ○ |

※ PCNS 로그인에 문제가 있는 경우엔, JAVA 업데이트 및 인터넷 방화벽에서 APC PowerChute Network Shutdown 프로그램을 예외처리 해주십시오.



Legendary Reliability™


2. Yes, I want to shut down the system 에 체크를 하고, 아래 원하는 시간을 기입합니다.  
(예 : 10seconds 면 배터리 동작한지 10 초후 셧다운이 시작됩니다.)

Address <http://127.0.0.1:3052/> Go

**PowerChute**  
Network Shutdown

- ▼ ASPSELN048
  - View Event Log
  - Configure Events**
  - Configure Shutdown
  - Set Up Communications
- ▼ UPS Information
  - Smart-UPS 750
  - Connected Servers
- ▶ Help




ASPSELN048

**Configure Shutdown** ?

Do you want to shut down the system when the selected event happens?

Yes, I want to shut down the system.


Shutdown the system only when the event lasts this long (seconds):

3. Apply 를 눌러 빠져나오면, On Battery 네번째에 녹색불이 들어온것을 확인하실수 있습니다. 이외에도 이 tab 에서 다른 여러 Event 시 셧다운을 설정할수 있습니다.

Address <http://127.0.0.1:3052/> Go

**PowerChute**  
Network Shutdown

- ▼ ASPSELN048
  - View Event Log
  - Configure Events**
  - Configure Shutdown
  - Set Up Communications
- ▼ UPS Information
  - Smart-UPS 750
  - Connected Servers
- ▶ Help



|  |   |   |   |   |
|--|---|---|---|---|
| Environment: Humidity Probe 1 Out Of Range               | 🟢 | 🟡 | 🟡 | 🟡 |
| Environment: Humidity Probe 2 In Range                   | 🟢 | 🟡 | 🟡 |   |
| Environment: Humidity Probe 2 Out Of Range               | 🟢 | 🟡 | 🟡 | 🟡 |
| Environment: Temperature Probe 1 In Range                | 🟢 | 🟡 | 🟡 |   |
| Environment: Temperature Probe 1 Out Of Range            | 🟢 | 🟡 | 🟡 | 🟡 |
| Environment: Temperature Probe 2 In Range                | 🟢 | 🟡 | 🟡 |   |
| Environment: Temperature Probe 2 Out Of Range            | 🟢 | 🟡 | 🟡 | 🟡 |
| Environmental Monitoring Card: Communication Established | 🟢 | 🟡 | 🟡 |   |
| Environmental Monitoring Card: Communication Lost        | 🟢 | 🟡 | 🟡 | 🟡 |
| Input Power: Restored                                    | 🟢 | 🟡 | 🟡 |   |
| Runtime: Exceeded  | 🟢 | 🟡 | 🟡 | 🟡 |
| Runtime: Normal Again                                    | 🟢 | 🟡 | 🟡 |   |
| SmartBoost: Activated                                    | 🟢 | 🟡 | 🟡 |   |
| SmartTrim: Activated                                     | 🟢 | 🟡 | 🟡 |   |
| UPS Overload: Corrected                                  | 🟢 | 🟡 | 🟡 |   |
| UPS: On Battery  | 🟢 | 🟡 | 🟡 | 🟢 |