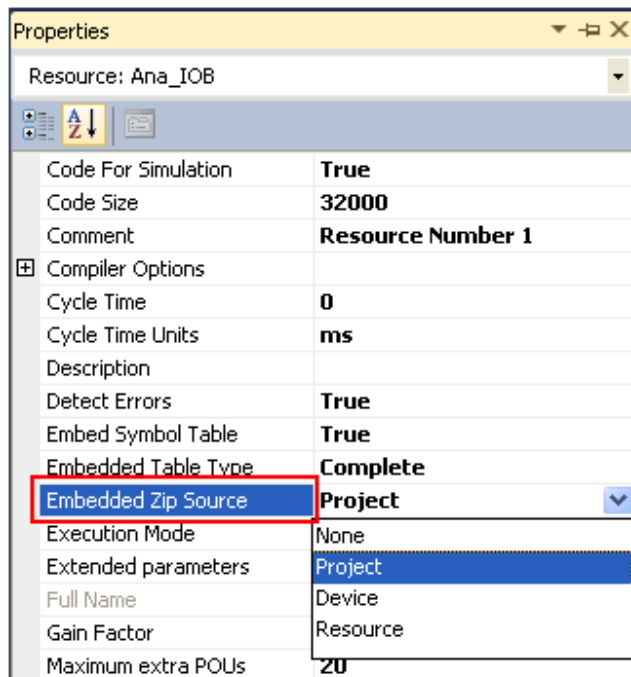


## Downloading a Workbench Project to the Target

The SCADAPack Workbench project "source" can be downloaded along with the RTU TIC code. The project is compressed by the Workbench and forms part of the application resource downloaded to the RTU.

This applies to applications downloaded via the Workbench Debugger or via file transfer in an ".ISP" package file. (See [Remote Target Access](#)).

To include Workbench Project "source" with the execution code to download to the target, set the Resource Property Embedded Zip Source settings as shown below.



*Embedding application source code*

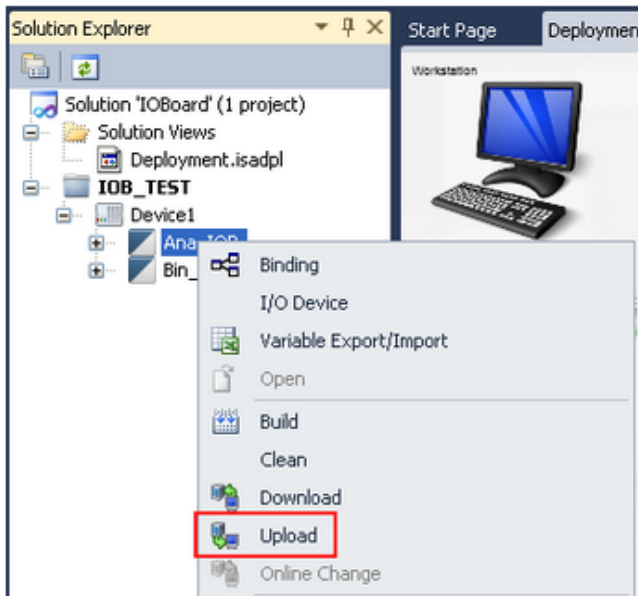
You can embed source for just the selected resource or for the whole project so that source is embedded for both project resources.

When the application is next built by the Workbench and downloaded to the RTU, it will store the project on the RTU for later retrieval by [Uploading](#).

## Uploading a Project from the Target to the Workbench

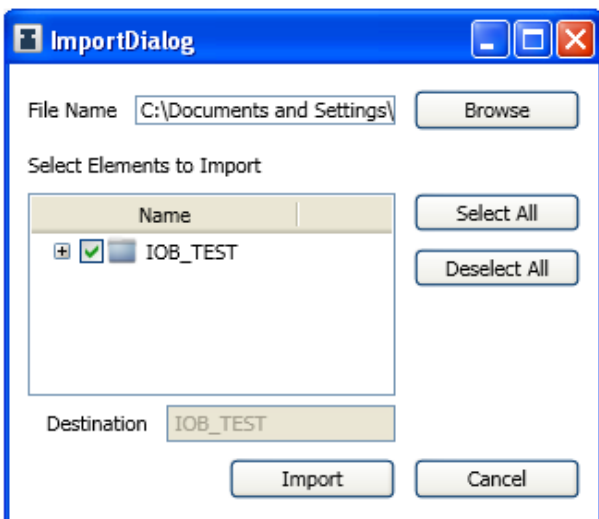
The SCADAPack Workbench allows a project's source to be retrieved from the IEC 61131-3 target if it was originally build with the Embedded Zip Source resource property.

In the Workbench Solution Explorer window, right click the desired resource to upload. It shows the dialog in the following figure:



Select a Resource to [Upload](#)

Select upload and wait while the data is uploaded from the target. When this is complete, an Import dialog will be shown as follows:



Resource Import Dialog

Selecting the Import button will load a copy of the uploaded resource into the Workbench Solution Explorer window.