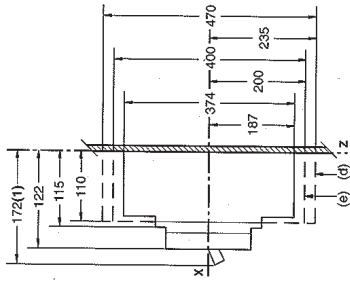
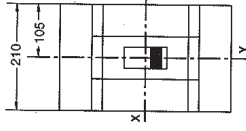


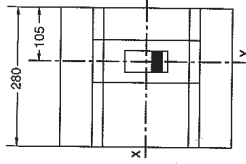
**dimensiones**  
C801NH a C1251NH



3P

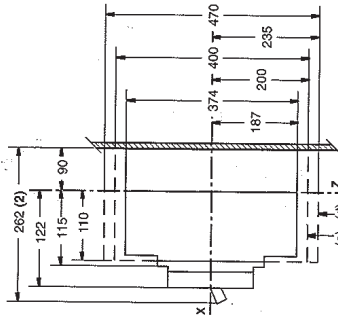


4P

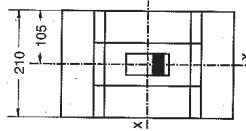


(1): 202 mm con empunadura larga

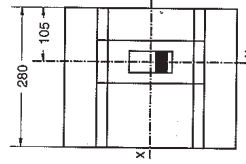
**C801L a C1001L**



3P



4P

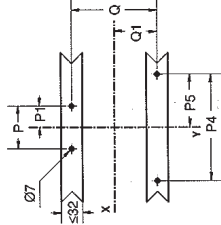


(2): 262 mm con empunadura larga

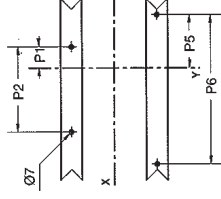
**fijación**

C801NH/L a C1251NH

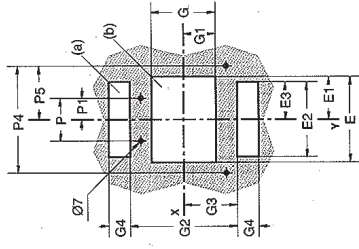
3P



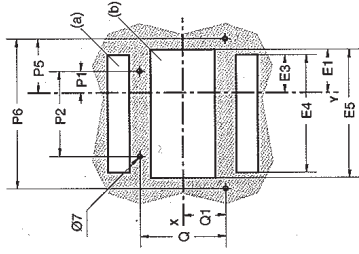
4P



3P



4P



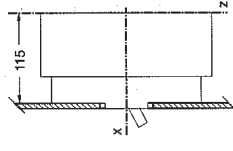
(a) troquel a realizar solamente en conexión fija posterior.  
(b) troquel a realizar solamente en caso de utilización de bloques de cables finos para auxiliar o mando eléctrico.

**Dimensiones (mm)**

cota (mm)	E	E1	E2	E3	E4	E5	G	G1	G2	G3	G4	P	P1	P2	P4	P5	P6	Q	Q1
C801NH	173	86,5	210	105	280	173	104,5	28	272	135	73	70	35	140	200	100	270	240	125
C1001NH																			
C1251NH																			
C801NI																			
C1251NI																			

**troqueles de la cara anterior**

C801NH/L a C1251NH



con marco de puerta

