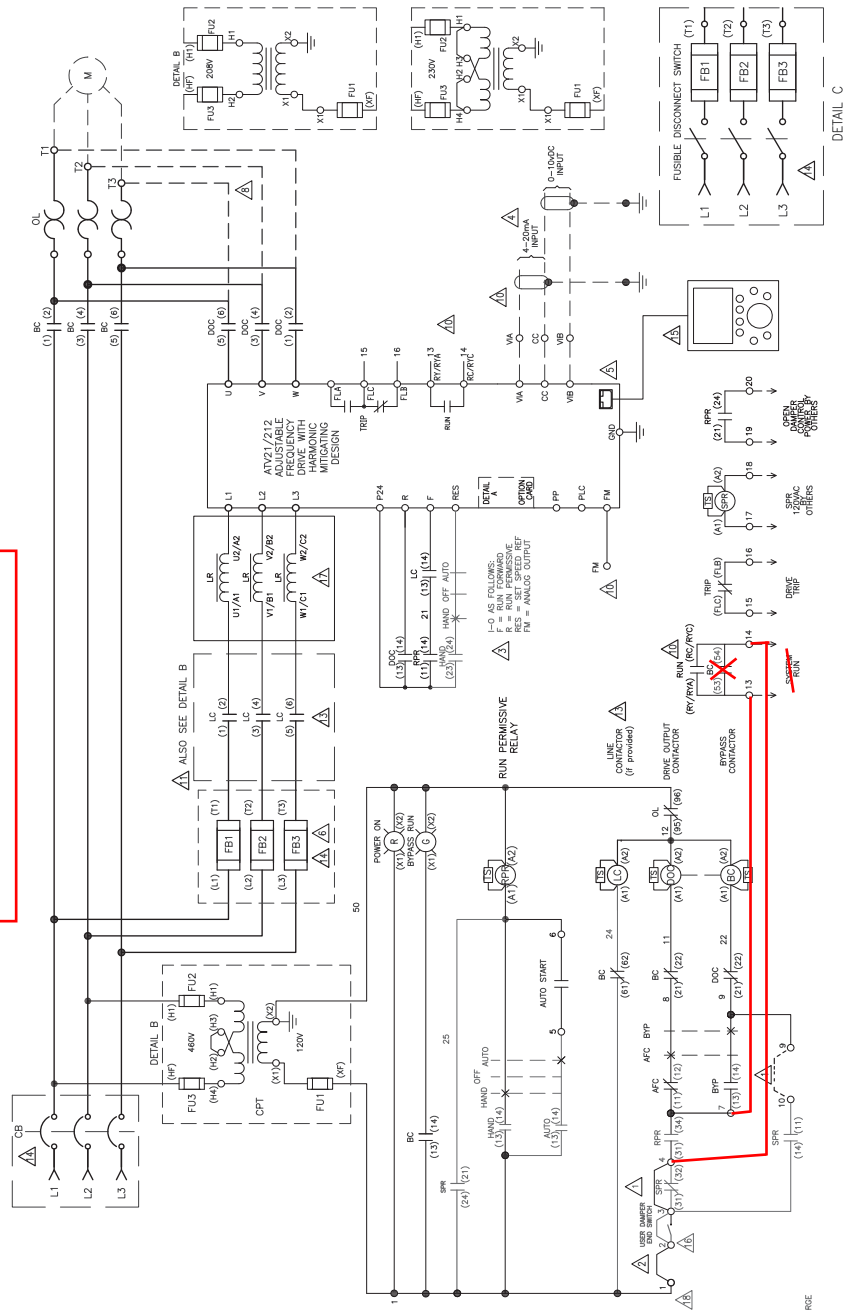


Figure 25 – Full Voltage Bypass Package, Power Circuit Y, Series E¹

Modification allows a ramp to stop but removes System Run status

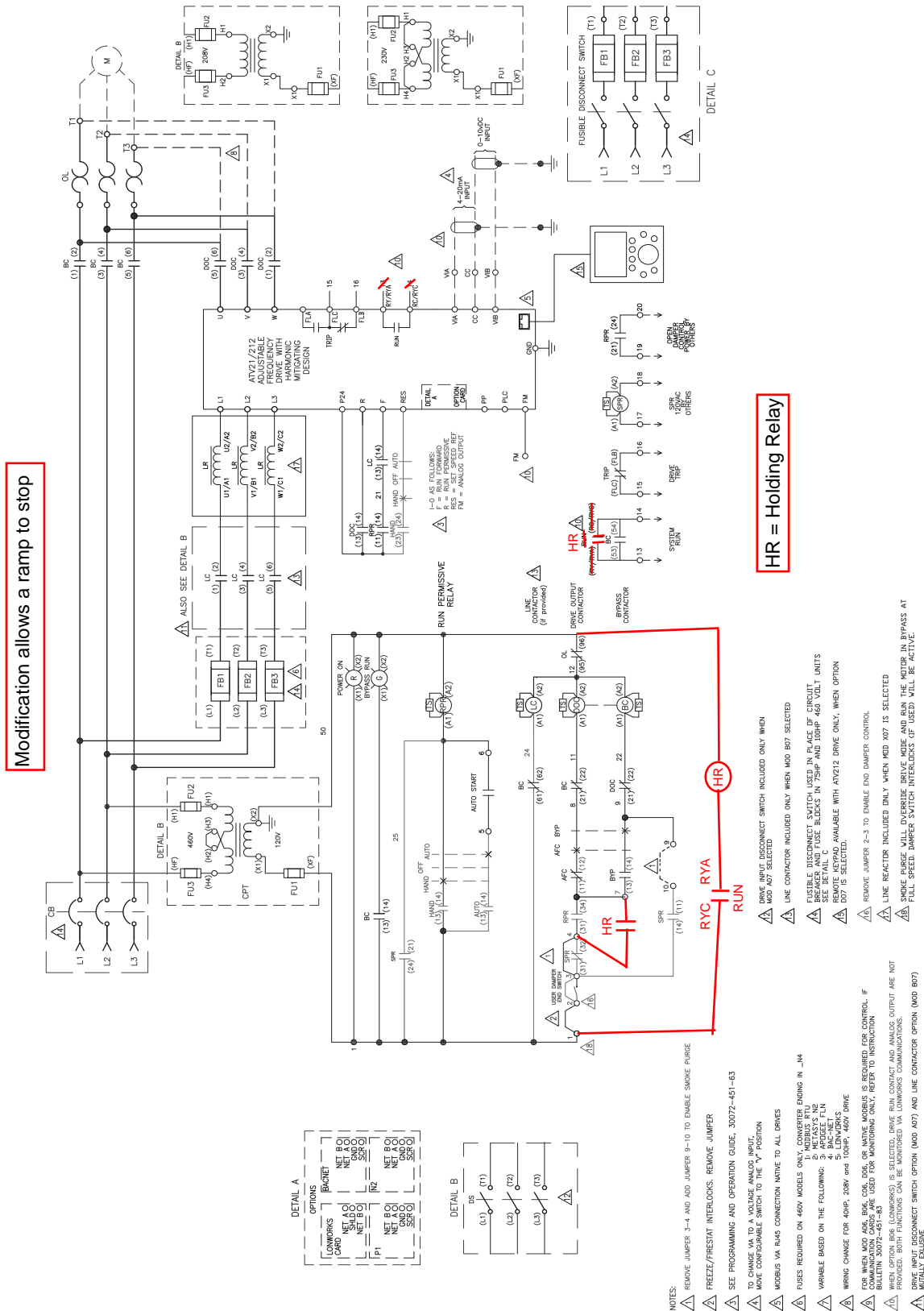


- △ DRIVE INPUT DISCONNECT SWITCH INCLUDED ONLY WHEN MOD A07 SELECTED
- △ LINE CONTACTOR INCLUDED ONLY WHEN MOD B07 SELECTED
- △ FUSEABLE DISCONNECT SWITCH USED IN PLACE OF CIRCUIT BREAKER AND FUSE BLOCKS IN 75HP AND 100HP 460 VOLT UNITS
- △ REMOTE KEYPAD AVAILABLE WITH ATV212 DRIVE ONLY, WHEN OPTION D07 IS SELECTED.
- △ REMOVE JUMPER 2-3 TO ENABLE END DAMPER CONTROL
- △ LINE REACTOR INCLUDED ONLY WHEN MOD A07 IS SELECTED
- △ SMOKE PURGE SHALL DIVERSIFY INVAKE W/FF AND RUN THE MOTOR IN BYPASS AT FULL SPEED DAMPER SWITCH INTERLOCKS IF USED WILL BE ACTIVE.

- NOTES:
- △ REMOVE JUMPER 3-4 AND ADD JUMPER 9-10 TO ENABLE SMOKE PURGE
 - △ FREEZE/PRESTAT INTERLOCKS: REMOVE JUMPER
 - △ SEE PROGRAMMING AND OPERATION GUIDE, 30072-451-63
 - △ TO CHANGE TO A 3-WIRE DAMPER MOTOR, MOD CONFIGURABLE SWITCH TO THE "Y" POSITION
 - △ MODS VIA R4S CONNECTION NATIVE TO ALL DRIVES
 - △ FUSES REQUIRED ON 460V MODELS ONLY, CONVERTER ENDING IN „M“
 - △ VARIABLE BASED ON THE FOLLOWING:
 - 1- HUBBUS INFLUENCE
 - 2- AIR-TECH 2LN
 - 3- AIR-TECH 2LN
 - 4- PAC-NET
 - 5- PAC-NET
 - △ WIRING CHANGE FOR 40HP, 208V and 100HP, 460V DRIVE
 - △ FOR WHICH MOD B08, C08, D08, OR MATE MODS IS REQUIRED FOR CONTROL, IF COMMUNICATION CABLES ARE USED FOR MONITORING ONLY, REFER TO INSTRUCTION BULLETIN 30072-451-65
 - △ BULLETIN 30072-451-65 IS SELECTED, DRIVES RUN, STARTS AND ANALOG OUTPUT ARE NOT PROVIDED. BOTH FUNCTIONS CAN BE MONITORED VIA LOWVOLTAGE COMMUNICATIONS.
 - △ DRIVE INPUT DISCONNECT SWITCH OPTION (MOD A07) AND LINE CONTACTOR OPTION (MOD B07) MUTUALLY EXCLUSIVE

¹ To identify the series, refer to the nameplate on the enclosed drive.

Figure 25 – Full Voltage Bypass Package, Power Circuit Y, Series E¹



¹ To identify the series, refer to the nameplate on the enclosed drive.