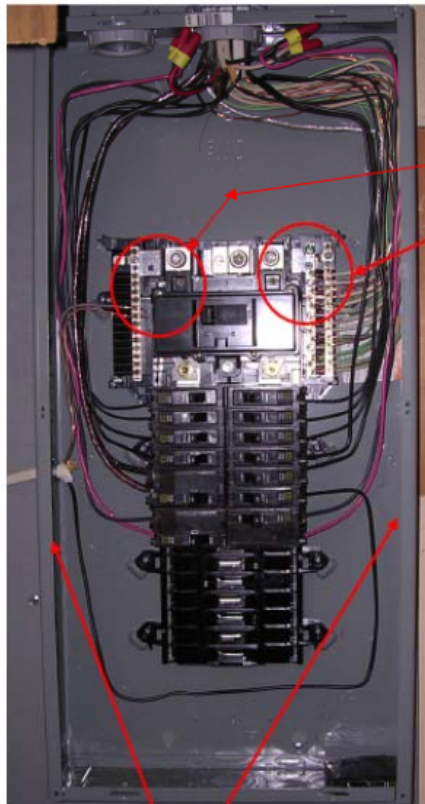
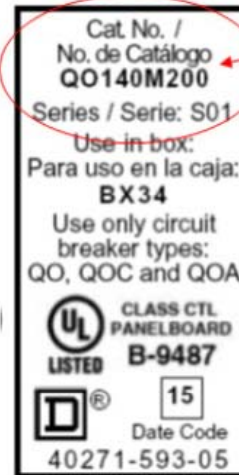


QO Load Centers - Convertible Mains Types

Location of Catalog Number, Series Number, Date Code



Your panel may not look exactly like this one, but the label with the catalog number and series number will be located in this area. The label will look like the below and be attached to the Plastic material of the interior. The label is approx. 1" x 1.5"



Catalog and series number.

Example of Date Code = 10322

10' = Year

32' = Week of Year

2' = Day of Week

The Labels that will contain the DATE CODE will be located on either side of the box.