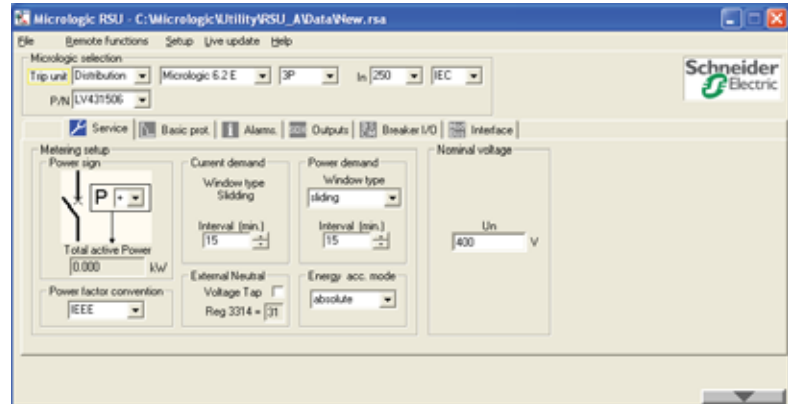


## Presetting the Protection Functions by a Dial

When a protection function is preset by a dial, the dial on the Micrologic trip unit and the virtual dial in the RSU software have to be in an identical position.

## Metering Setup

Access the metering setup settings using the RSU software under the



Description	Screen	Action
<p><b>ENVT Option Setup (Screen Action Device)</b></p>		<p>Check the declaration box for the ENVT option in the Metering setup/External Neutral Voltage Tap window.</p> <p>For a description of the content of Modbus™ 3314 register, see the <i>Modbus™ PowerPact™ H-, J-, and L-Frame Circuit Breaker User Manual</i>.</p> <p><b>NOTE:</b> Set the ENCT option directly on the Micrologic trip unit screen or using the RSU software under the Basic prot tab.</p>
<p><b>Power Setup</b>                      Provides the choice of power sign in the Services tab:</p>		<p>In the Metering setup/Power sign window, select the power sign:</p> <ul style="list-style-type: none"> <li>+ The power running through the circuit breaker from top to bottom is counted positively.</li> <li>- The power running through the circuit breaker from bottom to top is counted negatively.</li> </ul> <p>The default value of the powersign is +.</p>