

Figure 29: Power Circuit Y (With Bypass): Hand-Off-Auto, Speed Potentiometer and Start-Stop
(Drawing No. 80461-071-01)

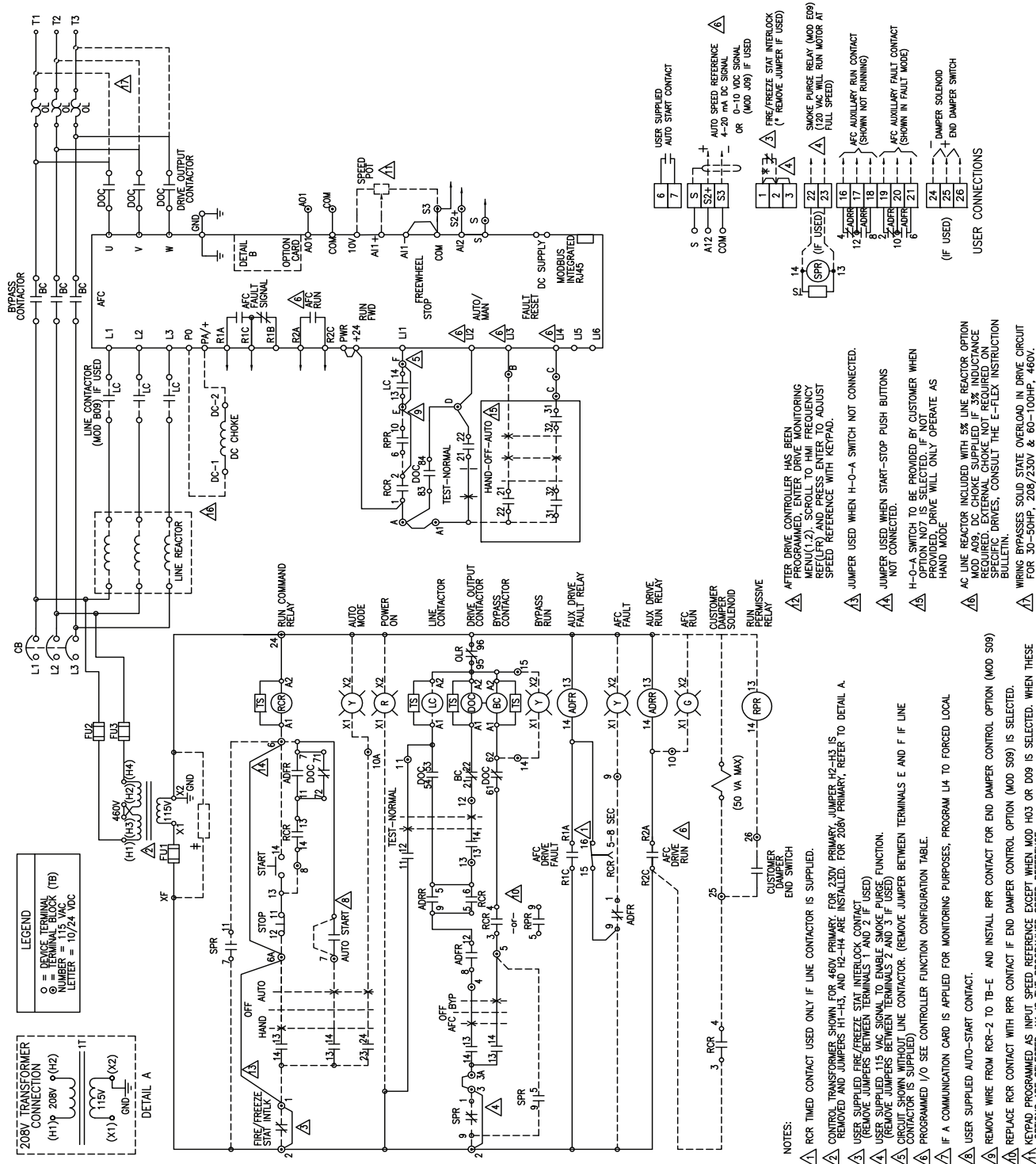
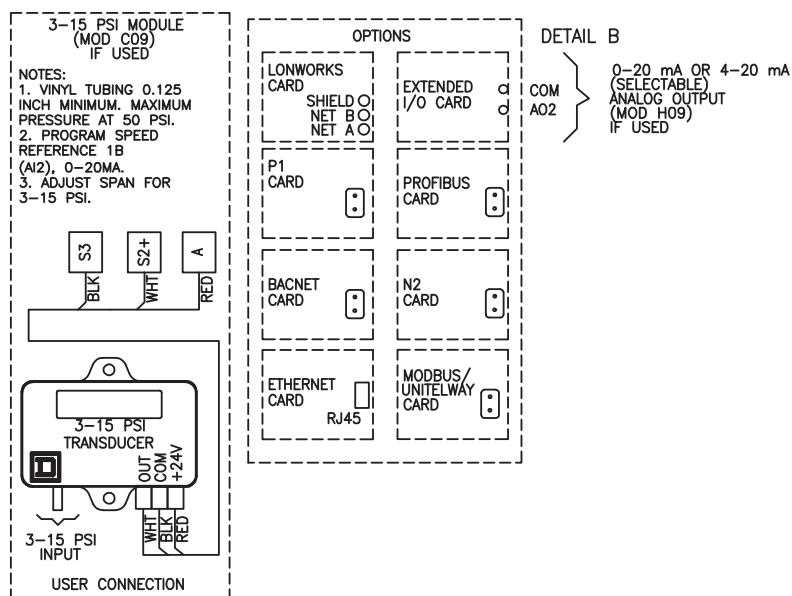


Figure 29: Power Circuit Y (With Bypass): Hand-Off-Auto, Speed Potentiometer and Start-Stop
(Drawing No. 80461-071-01) (continued)

ATV61 FACTORY CONFIGURATION						
MENU	No	SUB-MENU	DESCRIPTION	CODE	ADJ.	
SIM	1.1	----	2/3 WIRE CONTROL	tCC	2C	
SIM	1.1	----	PUMPS/FANS	CFG	PnF	
SIM	1.1	----	STANDARD MOT. FREQ (HZ)	bFr	60	
SIM	1.1	----	ACCELERATION (SEC)	ACC	10	
SIM	1.1	----	DECELERATION (SEC)	dEC	10	
SIM	1.1	----	LOW SPEED (HZ)	LSP	3	
SEt	1.3	----	SWITCHING FREQ. (HZ)	SFr	8	
I-O	1.5	----	2 WIRE TYPE	tCt	LEL	
I-O	1.5	AI2 CONFIG.	AI2 MIN. VALUE (mA)(W/O MOD J09)	CrL2	4	
I-O	1.5	R2 CONFIG.	R2 ASSIGN - DRIVE RUNNING	r2	rUn	
△1	CtL	1.6	----	REF. 1 CHAN	FR1	HMI
	CtL	1.6	----	REF. 1 CHAN(MOD H03 OR D09 ONLY)	FR1	AI1
△2	CtL	1.6	----	PROFILE(W/O MOD H03 OR D09 ONLY)	CHCF	SEP
	FUn	1.7	STOP CONFIG.	FREEWHEEL STOP ASSIGN	nST	LI2
△1	FUn	1.7	REFERENCE SWITCH.	REF. 1B SWITCHING	rCb	LI3
	FUn	1.7	REFERENCE SWITCH.	REF. 1B CHAN	Fr1b	AI2
△1	FLT	1.8	FAULT RESET	FAULT RESET	rSF	LI4
	FLT	1.8	CATCH ON THE FLY	CATCH ON THE FLY	FLR	YES
△1	FLT	1.8	OUTPUT PHASE LOSS	OUTPHASE LOSS	OPL	NO
	COM	1.9	FORCED LOCAL	FORCED LOCAL ASSIGN.	FLO	LI4
WHEN MOD H09 SELECTED - EXTENDED I/O CARD						
MENU	No	SUB-MENU	DESCRIPTION	CODE	ADJ.	
I-O	1.5	A02	A02 ASSIGNMENT (MOTOR FREQ, mA)	A02	OFr	
WHEN MOD J09 SELECTED - 0-10V DC SPEED REF.						
MENU	No	SUB-MENU	DESCRIPTION	CODE	ADJ.	
I-O	1.5	AI2 CONFIG.	AI2 TYPE	AI2t	10U	

DESCRIPTION	TYPE 1	TYPE 12K	TYPE 3R
‡ STIRRING FAN	NA	10-100HP 460V, 7.5-50HP 208/230V	NA
‡ VENTILATION FAN	NA	NA	ALL HP
‡ SPACE HEATER	NA	NA	ALL HP



LEGEND

○ = REMOVE TERMINAL NUMBER = 115 VAC LETTER = 10/24 VDC

208V TRANSFORMER CONNECTION

(H1) 208V 9(H2) 115V (X1) 115V (X2) 115V GND = DETAIL A

208V TRANSFORMER CONNECTION

(H1) 208V 9(H2) 115V (X1) 115V (X2) 115V GND = DETAIL A

WIRING DIAGRAM

The diagram shows the electrical connections for the drive system. Key components include:

- 208V TRANSFORMER:** Connected to the main power supply. Terminals H1, H2, X1, X2, and GND are labeled.
- CONTROL TRANSFORMER:** Provides 24V primary and 120V secondary for the control circuit. Terminals H1, H2, X1, X2, and GND are labeled.
- DRIVE CIRCUIT:** Includes the main power supply (L1, L2, L3), bypass contactor (BC), line reactor (LR), DC choke (DC-1, DC-2), and the drive unit (U1).
- CONTROL CIRCUIT:** Includes the control transformer, RCR (Reset Control Relay), ADR (Auxiliary Drive Relay), and various interlocking contacts (A1, A2, A3, A4, A5, A6, A7, A8, A9, A10, A11, A12, A13, A14, A15, A16, A17, A18, A19, A20, A21, A22, A23, A24, A25, A26, A27, A28, A29, A30, A31, A32, A33, A34, A35, A36, A37, A38, A39, A40, A41, A42, A43, A44, A45, A46, A47, A48, A49, A50, A51, A52, A53, A54, A55, A56, A57, A58, A59, A60, A61, A62, A63, A64, A65, A66, A67, A68, A69, A70, A71, A72, A73, A74, A75, A76, A77, A78, A79, A80, A81, A82, A83, A84, A85, A86, A87, A88, A89, A90, A91, A92, A93, A94, A95, A96, A97, A98, A99, A100, A101, A102, A103, A104, A105, A106, A107, A108, A109, A110, A111, A112, A113, A114, A115, A116, A117, A118, A119, A120, A121, A122, A123, A124, A125, A126, A127, A128, A129, A130, A131, A132, A133, A134, A135, A136, A137, A138, A139, A140, A141, A142, A143, A144, A145, A146, A147, A148, A149, A150, A151, A152, A153, A154, A155, A156, A157, A158, A159, A160, A161, A162, A163, A164, A165, A166, A167, A168, A169, A170, A171, A172, A173, A174, A175, A176, A177, A178, A179, A180, A181, A182, A183, A184, A185, A186, A187, A188, A189, A190, A191, A192, A193, A194, A195, A196, A197, A198, A199, A200, A201, A202, A203, A204, A205, A206, A207, A208, A209, A210, A211, A212, A213, A214, A215, A216, A217, A218, A219, A220, A221, A222, A223, A224, A225, A226, A227, A228, A229, A230, A231, A232, A233, A234, A235, A236, A237, A238, A239, A240, A241, A242, A243, A244, A245, A246, A247, A248, A249, A250, A251, A252, A253, A254, A255, A256, A257, A258, A259, A260, A261, A262, A263, A264, A265, A266, A267, A268, A269, A270, A271, A272, A273, A274, A275, A276, A277, A278, A279, A280, A281, A282, A283, A284, A285, A286, A287, A288, A289, A290, A291, A292, A293, A294, A295, A296, A297, A298, A299, A300, A301, A302, A303, A304, A305, A306, A307, A308, A309, A310, A311, A312, A313, A314, A315, A316, A317, A318, A319, A320, A321, A322, A323, A324, A325, A326, A327, A328, A329, A330, A331, A332, A333, A334, A335, A336, A337, A338, A339, A340, A341, A342, A343, A344, A345, A346, A347, A348, A349, A350, A351, A352, A353, A354, A355, A356, A357, A358, A359, A360, A361, A362, A363, A364, A365, A366, A367, A368, A369, A370, A371, A372, A373, A374, A375, A376, A377, A378, A379, A380, A381, A382, A383, A384, A385, A386, A387, A388, A389, A390, A391, A392, A393, A394, A395, A396, A397, A398, A399, A400, A401, A402, A403, A404, A405, A406, A407, A408, A409, A410, A411, A412, A413, A414, A415, A416, A417, A418, A419, A420, A421, A422, A423, A424, A425, A426, A427, A428, A429, A430, A431, A432, A433, A434, A435, A436, A437, A438, A439, A440, A441, A442, A443, A444, A445, A446, A447, A448, A449, A450, A451, A452, A453, A454, A455, A456, A457, A458, A459, A460, A461, A462, A463, A464, A465, A466, A467, A468, A469, A470, A471, A472, A473, A474, A475, A476, A477, A478, A479, A480, A481, A482, A483, A484, A485, A486, A487, A488, A489, A490, A491, A492, A493, A494, A495, A496, A497, A498, A499, A500, A501, A502, A503, A504, A505, A506, A507, A508, A509, A510, A511, A512, A513, A514, A515, A516, A517, A518, A519, A520, A521, A522, A523, A524, A525, A526, A527, A528, A529, A530, A531, A532, A533, A534, A535, A536, A537, A538, A539, A540, A541, A542, A543, A544, A545, A546, A547, A548, A549, A550, A551, A552, A553, A554, A555, A556, A557, A558, A559, A560, A561, A562, A563, A564, A565, A566, A567, A568, A569, A570, A571, A572, A573, A574, A575, A576, A577, A578, A579, A580, A581, A582, A583, A584, A585, A586, A587, A588, A589, A590, A591, A592, A593, A594, A595, A596, A597, A598, A599, A600, A601, A602, A603, A604, A605, A606, A607, A608, A609, A610, A611, A612, A613, A614, A615, A616, A617, A618, A619, A620, A621, A622, A623, A624, A625, A626, A627, A628, A629, A630, A631, A632, A633, A634, A635, A636, A637, A638, A639, A640, A641, A642, A643, A644, A645, A646, A647, A648, A649, A650, A651, A652, A653, A654, A655, A656, A657, A658, A659, A660, A661, A662, A663, A664, A665, A666, A667, A668, A669, A670, A671, A672, A673, A674, A675, A676, A677, A678, A679, A680, A681, A682, A683, A684, A685, A686, A687, A688, A689, A690, A691, A692, A693, A694, A695, A696, A697, A698, A699, A700, A701, A702, A703, A704, A705, A706, A707, A708, A709, A710, A711, A712, A713, A714, A715, A716, A717, A718, A719, A720, A721, A722, A723, A724, A725, A726, A727, A728, A729, A730, A731, A732, A733, A734, A735, A736, A737, A738, A739, A740, A741, A742, A743, A744, A745, A746, A747, A748, A749, A750, A751, A752, A753, A754, A755, A756, A757, A758, A759, A760, A761, A762, A76

[illegible]

Figure 31: Power Circuit W (Without Bypass): Hand-Off-Auto, Start-Stop, and Speed Potentiometer (Drawing No. 80461-073-01)

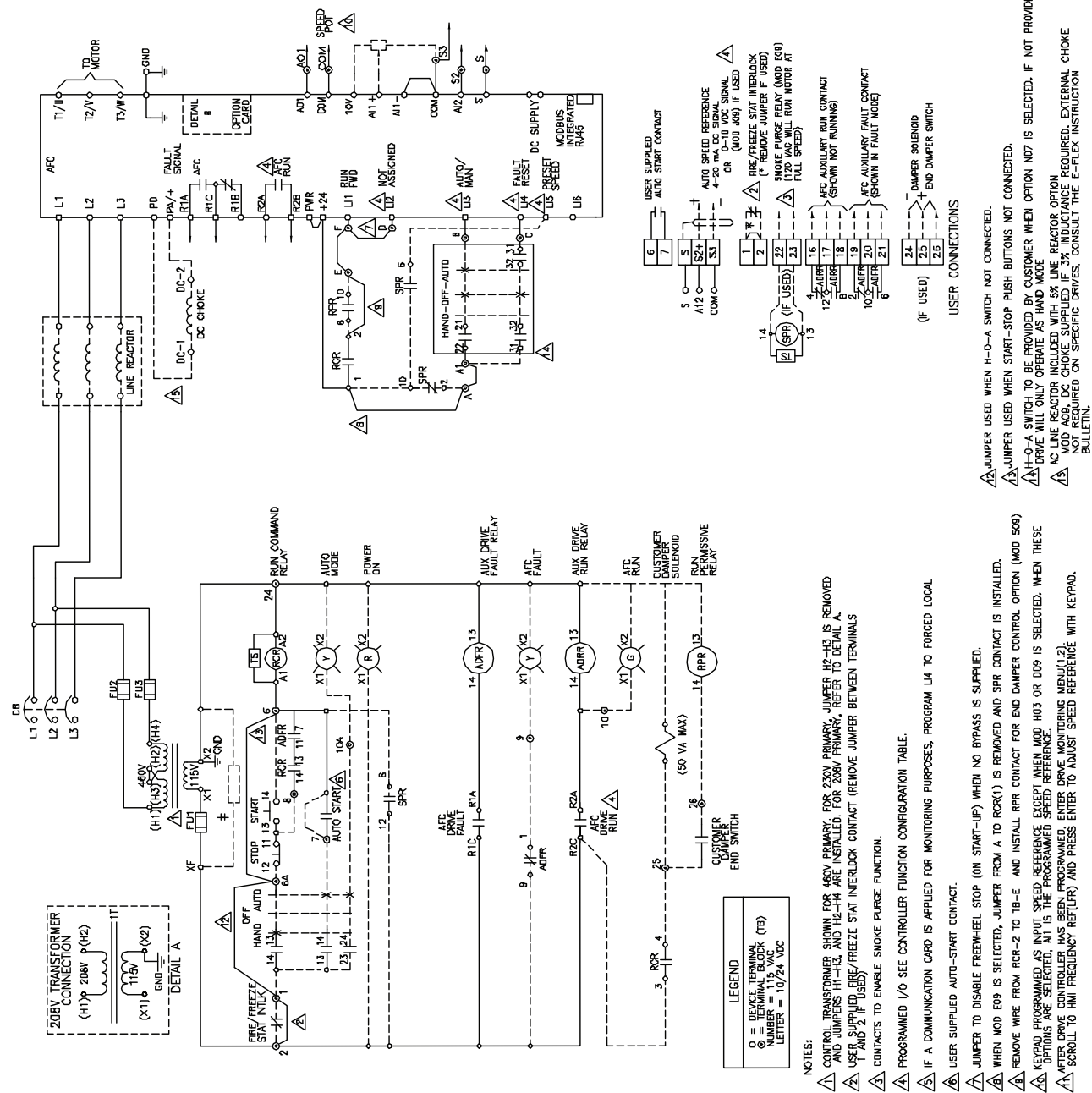


Figure 31: Power Circuit W (Without Bypass): Hand-Off-Auto, Start-Stop, and Speed Potentiometer
(Drawing No. 80461-073-01) (continued)

ATV61 FACTORY CONFIGURATION

MENU	No	SUB-MENU	DESCRIPTION	CODE	ADJ.
SIM	1.1	----	2/3 WIRE CONTROL	tCC	2C
SIM	1.1	----	PUMPS/FANS	CFG	PnF
SIM	1.1	----	STANDARD MOT. FREQ (HZ)	bFr	60
SIM	1.1	----	ACCELERATION (SEC)	ACC	10
SIM	1.1	----	DECELERATION (SEC)	dEC	10
SIM	1.1	----	LOW SPEED (HZ)	LSP	3
SEt	1.3	----	SWITCHING FREQ. (HZ)	SFr	8
I-O	1.5	----	2 WIRE TYPE	tCt	LEL
I-O	1.5	AI2 CONFIG.	AI2 MIN. VALUE (mA)(W/O MOD J09)	CrL2	4
I-O	1.5	R2 CONFIG.	R2 ASSIGN - DRIVE RUNNING	r2	rUn
CtL	1.6	----	REF. 1 CHAN	FR1	HMI
CtL	1.6	----	REF. 1 CHAN(MOD H03 OR D09 ONLY)	FR1	AI1
CtL	1.6	----	PROFILE(W/O MOD H03 OR D09 ONLY)	CHCF	SEP
FUn	1.7	REFERENCE SWITCH.	REF. 1B SWITCHING	rCb	LI3
FUn	1.7	REFERENCE SWITCH.	REF. 1B CHAN	Fr1b	AI2
FUn	1.7	PRESET SPEEDS	2 PRESET SPEEDS	PS2	LI5
FUn	1.7	PRESET SPEEDS	PRESET SPEED 2	SP2	60
FLT	1.8	FAULT RESET	FAULT RESET	rSF	LI4
FLT	1.8	CATCH ON THE FLY	CATCH ON THE FLY	FLR	YES
COM	1.9	FORCED LOCAL	FORCED LOCAL ASSIGN.	FLO	LI4

WHEN MOD H09 SELECTED - EXTENDED I/O CARD

MENU	No	SUB-MENU	DESCRIPTION	CODE	ADJ.
I-O	1.5	A02	A02 ASSIGNMENT (MOTOR FREQ, mA)	A02	QFr

WHEN MOD J09 SELECTED - 0-10V DC SPEED REF.

MENU	No	SUB-MENU	DESCRIPTION	CODE	ADJ.
I-O	1.5	AI2 CONFIG.	AI2 TYPE	AI2t	10U

DESCRIPTION	TYPE 1	TYPE 12K	TYPE 3R
±STIRRING FANS	NA	10-100HP 480V, 7.5-50HP 208/230V	NA
±VENTILATION FAN	NA	NA	ALL HP
±SPACE HEATER	NA	NA	ALL HP

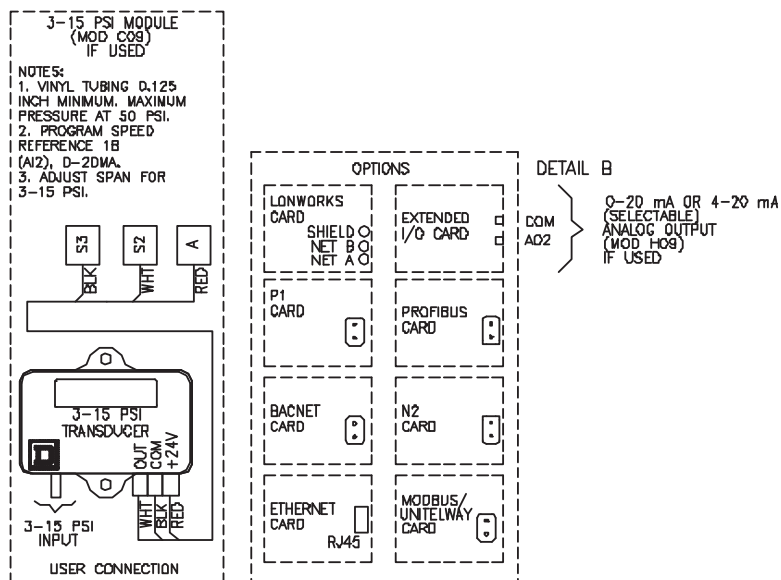
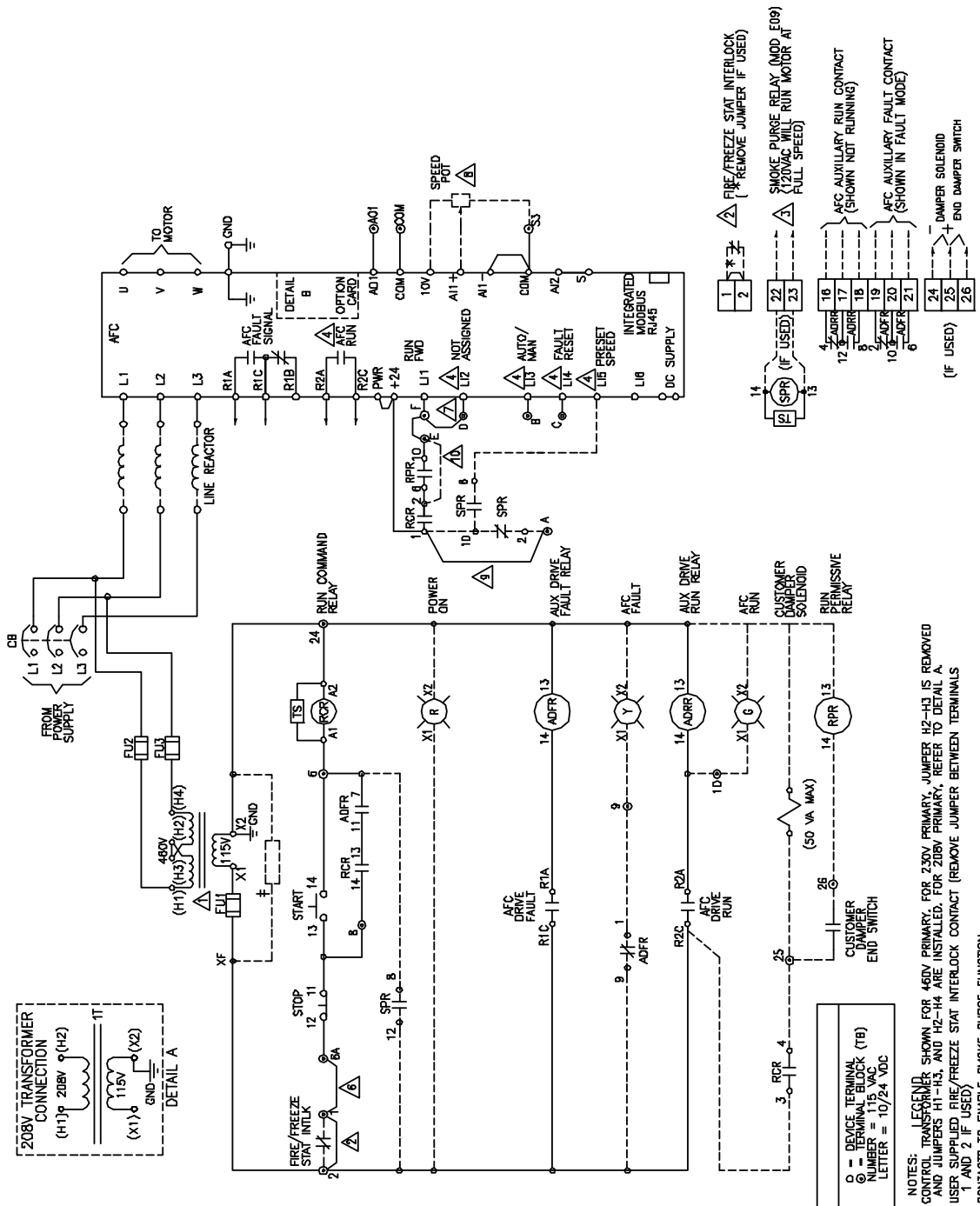


Figure 32: Power Circuit W (Without Bypass): Start-Stop and Speed Potentiometer
(Drawing No. 80461-074-01)



NOTES:
1. CONTROLLER SHOWN FOR 480V PRIMARY. FOR 230V PRIMARY, JUMPER H2-H3 IS REMOVED AND JUMPER H1-H3 AND H2-H4 ARE INSTALLED. FOR 208V PRIMARY, REFER TO DETAIL A.
2. USER SUPPLIED FIRE/FREEZE STAT INTERLOCK CONTACT (REMOVE JUMPER BETWEEN TERMINALS 1 AND 2 IF USED).
3. CONTACTS TO ENABLE SMOKE PURGE FUNCTION.
4. PROGRAMMED I/O SEE CONTROLLER FUNCTION CONFIGURATION TABLE.
5. JUMPER USED WHEN H-O-A SWITCH IS NOT SUPPLIED.
6. JUMPER TO DISABLE FREEWHEEL STOP (ON START-UP) WHEN NO BYPASS IS SUPPLIED.
7. JUMPER TO ENABLE SMOKE PURGE FUNCTION.

USER CONNECTIONS
8. KEYPAD PROGRAMMED AS INPUT SPEED REFERENCE EXCEPT WHEN MOD H03 OR D09 IS SELECTED. WHEN THESE OPTIONS ARE SELECTED, A11 IS THE PROGRAMMED SPEED REFERENCE.
9. WHEN MOD E09 IS SELECTED, JUMPER FROM A TO RCR(1) IS REMOVED AND SPR CONTACT IS INSTALLED.
10. REMOVE WIRE FROM RCR-2 TO TB-E AND INSTALL RPR CONTACT FOR END DAMPER CONTROL OPTION (MOD S09).
11. AFTER DRIVE CONTROLLER HAS BEEN PROGRAMMED, ENTER DRIVE MONITORING MENU(1,2).
12. SCROLL TO HMI FREQUENCY REF(LFR) AND PRESS ENTER TO ADJUST SPEED REFERENCE WITH KEYPAD.

Figure 32: Power Circuit W (Without Bypass): Start-Stop and Speed Potentiometer
(Drawing No. 80461-074-01) (continued)

ATV61 FACTORY CONFIGURATION					
MENU	No	SUB-MENU	DESCRIPTION	CODE	ADJ.
SIM	1.1	----	2/3 WIRE CONTROL	tCC	2C
SIM	1.1	----	PUMPS/FANS	CFG	PnF
SIM	1.1	----	STANDARD MOT. FREQ (HZ)	bFr	60
SIM	1.1	----	ACCELERATION (SEC)	ACC	10
SIM	1.1	----	DECELERATION (SEC)	dEC	10
SIM	1.1	----	LOW SPEED (HZ)	LSP	3
SEt	1.3	----	SWITCHING FREQ. (HZ)	SFr	8
I-O	1.5	----	2 WIRE TYPE	tCt	LEL
I-O	1.5	AI2 CONFIG.	AI2 MIN. VALUE (mA)(W/O MOD J09)	CrL2	4
I-O	1.5	R2 CONFIG.	R2 ASSIGN - DRIVE RUNNING	r2	rUn
CtL	1.6	----	REF. 1 CHAN	FR1	HMI
CtL	1.6	----	REF. 1 CHAN(MOD H03 OR D09 ONLY)	FR1	AI1
CtL	1.6	----	PROFILE(W/O MOD H03 OR D09 ONLY)	CHCF	SEP
FUn	1.7	REFERENCE SWITCH.	REF. 1B SWITCHING	rCb	LI3
FUn	1.7	REFERENCE SWITCH.	REF. 1B CHAN	Fr1b	AI2
FUn	1.7	PRESET SPEEDS	2 PRESET SPEEDS	PS2	LI5
FUn	1.7	PRESET SPEEDS	PRESET SPEED 2	SP2	60
FLT	1.8	FAULT RESET	FAULT RESET	rSF	LI4
FLT	1.8	CATCH ON THE FLY	CATCH ON THE FLY	FLR	YES
WHEN MOD H09 SELECTED - EXTENDED I/O CARD					
MENU	No	SUB-MENU	DESCRIPTION	CODE	ADJ.
I-O	1.5	A02	A02 ASSIGNMENT (MOTOR FREQ, mA)	A02	OFr
WHEN MOD J09 SELECTED - 0-10V DC SPEED REF.					
MENU	No	SUB-MENU	DESCRIPTION	CODE	ADJ.
I-O	1.5	AI2 CONFIG.	AI2 TYPE	AI2t	10U

DESCRIPTION	TYPE 1	TYPE 12K	TYPE 3R
± STIRRING FANS	10-100HP 460V, 7.5-50HP 208/230V	10-100HP 460V, 7.5-50HP 208/230V	NA
± VENTILATION FAN	NA	NA	ALL HP
± SPACE HEATER	NA	NA	ALL HP

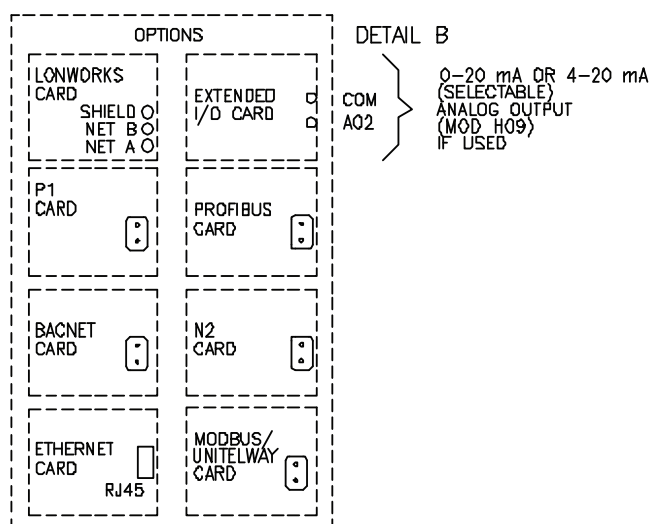


Figure 33: Power Circuit W (Without Bypass): Hand-Off-Auto and Speed Potentiometer
(Drawing No. 80461-075-01)

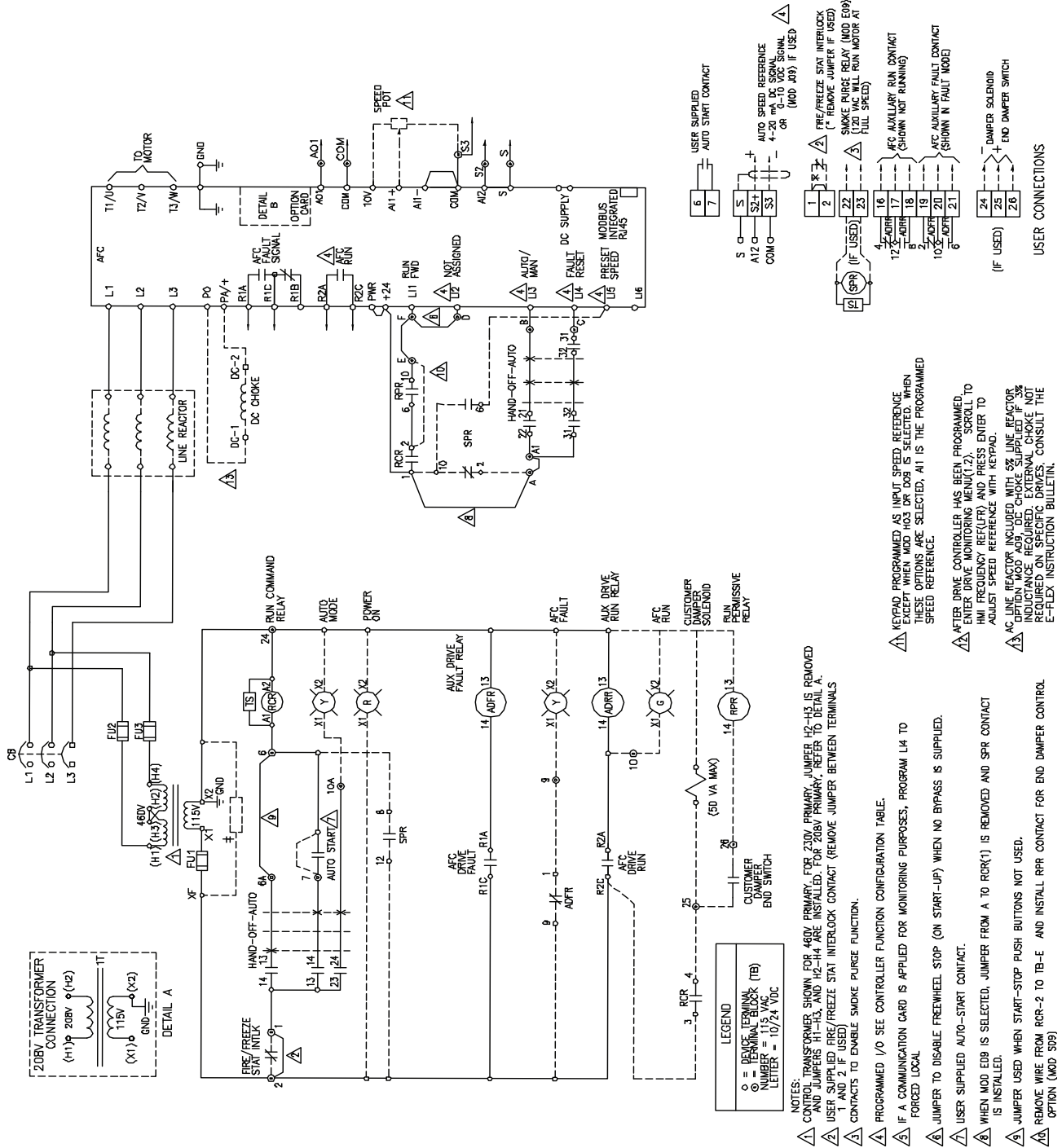
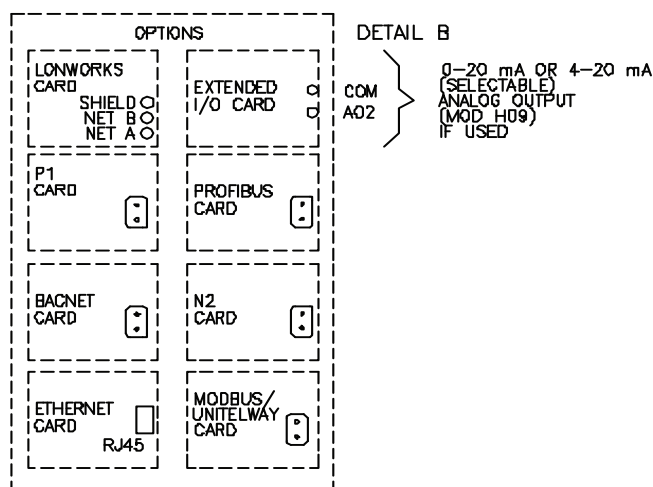
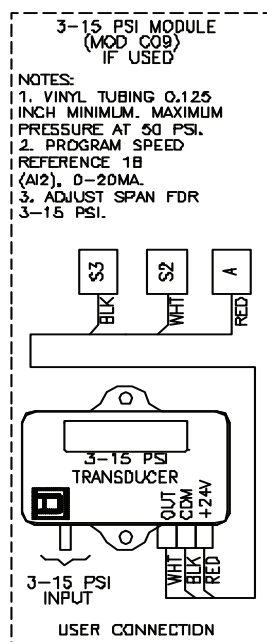


Figure 33: Power Circuit W (Without Bypass): Hand-Off-Auto and Speed Potentiometer
(Drawing No. 80461-075-01) (continued)

ATV61 FACTORY CONFIGURATION

MENU	No	SUB-MENU	DESCRIPTION	CODE	ADJ.
SIM	1.1	----	2/3 WIRE CONTROL	tCC	2C
SIM	1.1	----	PUMPS/FANS	CFG	PnF
SIM	1.1	----	STANDARD MOT. FREQ (HZ)	bFr	60
SIM	1.1	----	ACCELERATION (SEC)	ACC	10
SIM	1.1	----	DECELERATION (SEC)	dEC	10
SIM	1.1	----	LOW SPEED (HZ)	LSP	3
SEt	1.3	----	SWITCHING FREQ. (HZ)	SFr	8
I-O	1.5	----	2 WIRE TYPE	tct	LEL
I-O	1.5	AI2 CONFIG.	AI2 MIN. VALUE (mA)(W/O MOD J09)	CrL2	4
I-O	1.5	R2 CONFIG.	R2 ASSIGN - DRIVE RUNNING	r2	rUn
CtL	1.6	----	REF. 1 CHAN	FR1	HMI
CtL	1.6	----	REF. 1 CHAN(MOD H03 OR D09 ONLY)	FR1	AI1
CtL	1.6	----	PROFILE(W/O MOD H03 OR D09 ONLY)	CHCF	SEP
FUn	1.7	REFERENCE SWITCH.	REF. 1B SWITCHING	rCb	LI3
FUn	1.7	REFERENCE SWITCH.	REF. 1B CHAN	Fr1b	AI2
FUn	1.7	PRESET SPEEDS	2 PRESET SPEEDS	PS2	LI5
FUn	1.7	PRESET SPEEDS	PRESET SPEED 2	SP2	60
FLT	1.8	FAULT RESET	FAULT RESET	rSF	LI4
FLT	1.8	CATCH ON THE FLY	CATCH ON THE FLY	FLR	YES
COM	1.9	FORCED LOCAL	FORCED LOCAL ASSIGN.	FLO	LI4
WHEN MOD H09 SELECTED - EXTENDED I/O CARD					
MENU	No	SUB-MENU	DESCRIPTION	CODE	ADJ.
I-O	1.5	A02	A02 ASSIGNMENT (MOTOR FREQ, mA)	A02	OFr
WHEN MOD J09 SELECTED - 0-10V DC SPEED REF.					
MENU	No	SUB-MENU	DESCRIPTION	CODE	ADJ.
I-O	1.5	AI2 CONFIG.	AI2 TYPE	AI2t	10U

DESCRIPTION	TYPE 1	TYPE 12K	TYPE 3R
± STIRRING FANS	NA	10-100HP 460V, 7.5-50HP 208/230V	NA
± VENTILATION FAN	NA	NA	ALL HP
± SPACE HEATER	NA	NA	ALL HP

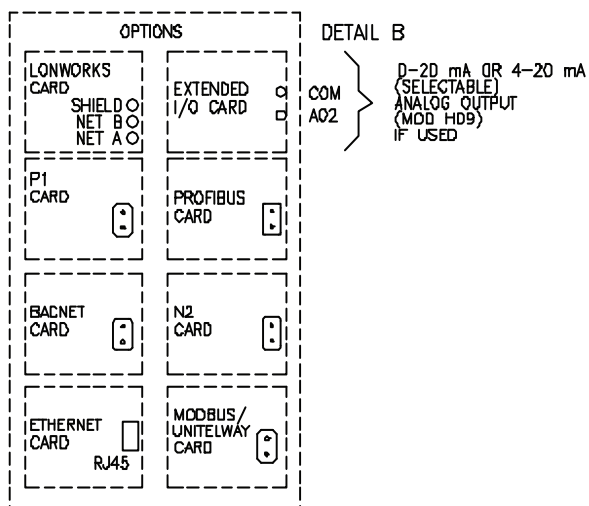


[illegible]

Figure 34: Power Circuit Y (With Bypass): Hand-Off-Comm, Start-Stop, and Speed Potentiometer
(Drawing No. 80461-078-01) (continued)

ATV61 FACTORY CONFIGURATION				
MENU	No	SUB-MENU	DESCRIPTION	CODE
SIM	1.1	----	2/3 WIRE CONTROL	tCC
SIM	1.1	----	PUMPS/FANS	CFG
SIM	1.1	----	STANDARD MOT. FREQ (HZ)	bFr
SIM	1.1	----	ACCELERATION (SEC)	ACC
SIM	1.1	----	DECELERATION (SEC)	dEC
SIM	1.1	----	LOW SPEED (HZ)	LSP
SEt	1.3	----	SWITCHING FREQ. (HZ)	SFr
I-O	1.5	----	2 WIRE TYPE	tCt
I-O	1.5	R2 CONFIG.	R2 ASSIGN - DRIVE RUNNING	r2
CtL	1.6	----	REF. 1 CHAN(W/O H03 OR D09 ONLY)	FR1
CtL	1.6	----	REF. 1 CHAN(MOD H03 OR D09 ONLY)	FR1
CtL	1.6	----	PROFILE	CHCF
CtL	1.6	----	CMD SWITCHING	CCS
CtL	1.6	----	CMD CHANNEL 2	Cd2
FUn	1.7	REFERENCE SWITCH.	REF. 1B SWITCHING	rCb
FUn	1.7	REFERENCE SWITCH.	REF. 1B CHANNEL	Fr1b
FUn	1.7	STOP CONFIG.	FREEWHEEL STOP ASSIGN.	nST
FLT	1.8	FAULT RESET	FAULT RESET	rSF
FLT	1.8	CATCH ON THE FLY	CATCH ON THE FLY	FLR
FLT	1.8	OUTPUT PHASE LOSS	OUTPHASE LOSS	OPL
COM	1.9	FORCED LOCAL	FORCED LOCAL ASSIGN.	FLO
WHEN MOD H09 SELECTED - EXTENDED I/O CARD				
MENU	No	SUB-MENU	DESCRIPTION	CODE
I-O	1.5	A02	A02 ASSIGNMENT (MOTOR FREQ, mA)	A02

DESCRIPTION	TYPE 1	TYPE 12K	TYPE 3R
‡ STIRRING FANS	NA	10-100HP 460V, 7.5-50HP 208/230V	NA
‡ VENTILATION FAN	NA	NA	ALL HP
‡ SPACE HEATER	NA	NA	ALL HP



(Drawing No. 80461-079-01)

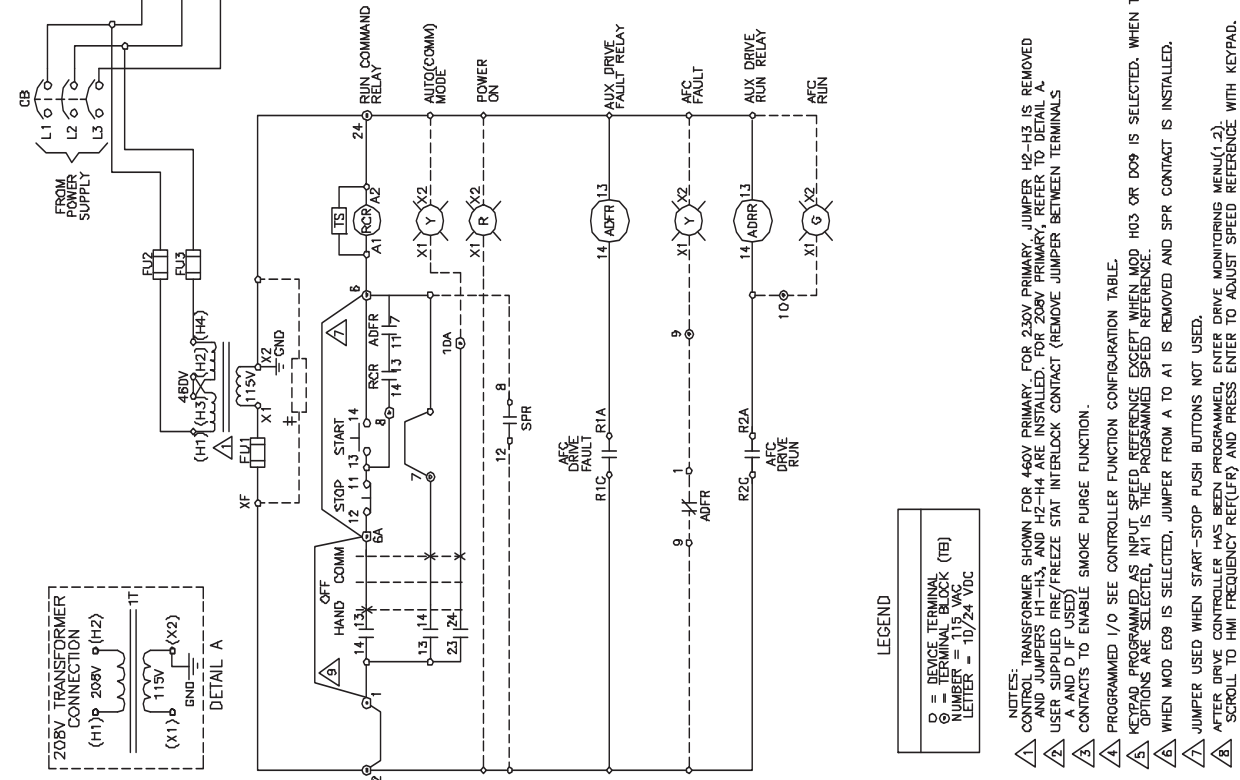


Figure 35: Power Circuit W (Without Bypass): Hand-Off-Comm, Start-Stop, and Speed Potentiometer
(Drawing No. 80461-079-01) (continued)

ATV61 FACTORY CONFIGURATION					
MENU	No	SUB-MENU	DESCRIPTION	CODE	ADJ.
SIM	1.1	----	2/3 WIRE CONTROL	tCC	2C
SIM	1.1	----	PUMPS/FANS	CFG	PnF
SIM	1.1	----	STANDARD MOT. FREQ (HZ)	bFr	60
SIM	1.1	----	ACCELERATION (SEC)	ACC	10
SIM	1.1	----	DECELERATION (SEC)	dEC	10
SIM	1.1	----	LOW SPEED (HZ)	LSP	3
SEt	1.3	----	SWITCHING FREQ. (HZ)	SFr	8
I-O	1.5	----	2 WIRE TYPE	tCt	LEL
I-O	1.5	R2 CONFIG.	R2 ASSIGN — DRIVE RUNNING	r2	rUn
CtL	1.6	----	REF. 1 CHAN(W/O H03 OR D09 ONLY)	FR1	HMI
CtL	1.6	----	REF. 1 CHAN(MOD H03 OR D09 ONLY)	FR1	AI1
CtL	1.6	----	PROFILE	CHCF	SEP
CtL	1.6	----	CMD SWITCHING	CCS	LI3
CtL	1.6	----	CMD CHANNEL 2	Cd2	COM.CARD
FUn	1.7	REFERENCE SWITCH.	REF. 1B SWITCHING	rCb	LI3
FUn	1.7	REFERENCE SWITCH	REF. 1B CHANNEL	Fr1b	COM.CARD
FUn	1.7	STOP CONFIG.	FREEWHEEL STOP ASSIGN.	nST	LI2
FUn	1.7	PRESET SPEEDS	2 PRESET SPEEDS	PS2	LI5
FUn	1.7	PRESET SPEEDS	PRESET SPEED 2	SP2	60
FLT	1.8	FAULT RESET	FAULT RESET	rSF	LI4
FLT	1.8	CATCH ON THE FLY	CATCH ON THE FLY	FLR	YES
COM	1.9	FORCED LOCAL	FORCED LOCAL ASSIGN.	FLO	LI4
WHEN MOD H09 SELECTED — EXTENDED I/O CARD					
MENU	No	SUB-MENU	DESCRIPTION	CODE	ADJ.
I-O	1.5	A02	A02 ASSIGNMENT (MOTOR FREQ, mA)	A02	OFr

DESCRIPTION	TYPE 1	TYPE 12K	TYPE 3R
± STIRRING FANS	NA	10–100HP 460V, 7.5–50HP 208/230V	NA
± VENTILATION FAN	NA	NA	ALL HP
± SPACE HEATER	NA	NA	ALL HP

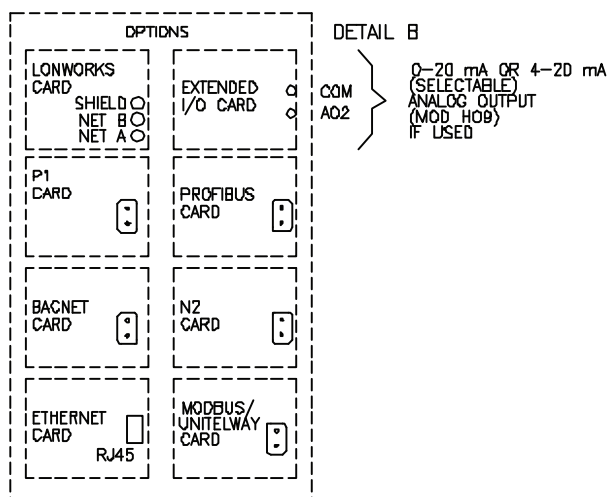


Figure 36: 3R Ventilation and Heater

