

How to add a Data Model to Easergy Studio (MiCOM S1 Studio):

1. Install Easergy Studio
2. Open the Data Model Manager
 - a. Start > All Programs > Schneider Electric > Easergy Studio > Data Model Manager
- 3.





Data Model Manager

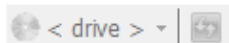
Add Data Models - Select Source

Select data model source. After clicking 'Next' the program will download the data models. This may take a while.



CD-ROM

To add data models from a CD-ROM, select the drive with Easergy Studio installation CD-ROM:



Local Folder

Select a local folder from which to add data models:

Browse



Internet

Select a server (FTP, HTTP, HTTPS):

Advanced



Template

Select a template:

**Select Internet,
Leave it set to Default HTTPS,
Click Next**

Next

Abort



Data Model Manager V6.0.0



Easergy Studio

Data Model Manager

Operations log:

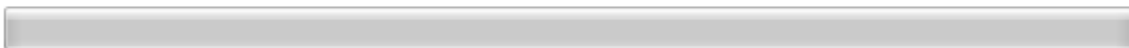
09:27:35.686 Reading local index ended successfully
10:39:47.390 Server name: Default HTTPS
10:39:47.479 Checking access permissions to remote resource.
10:39:49.921 Checking success.
10:39:49.961 Reading index.

This searches for the available data models and may take 15 minutes to finish. All depends on internet connection.

▶ Autoscroll

Status

Please wait.



Abort



Data Model Manager V6.0.0



Easergy Studio

Data Model Manager

Add Data Models - Select Languages

Please select one or more languages from the list, then click 'Next'. Only languages available from the selected source are listed.

- ☐ Chinese [zh]
- ☒ English [en]
- ☐ French [fr]
- ☐ German [de]
- ☐ Italian [it]
- ☐ Polish [pl]
- ☐ Russian [ru]
- ☐ Spanish [es]

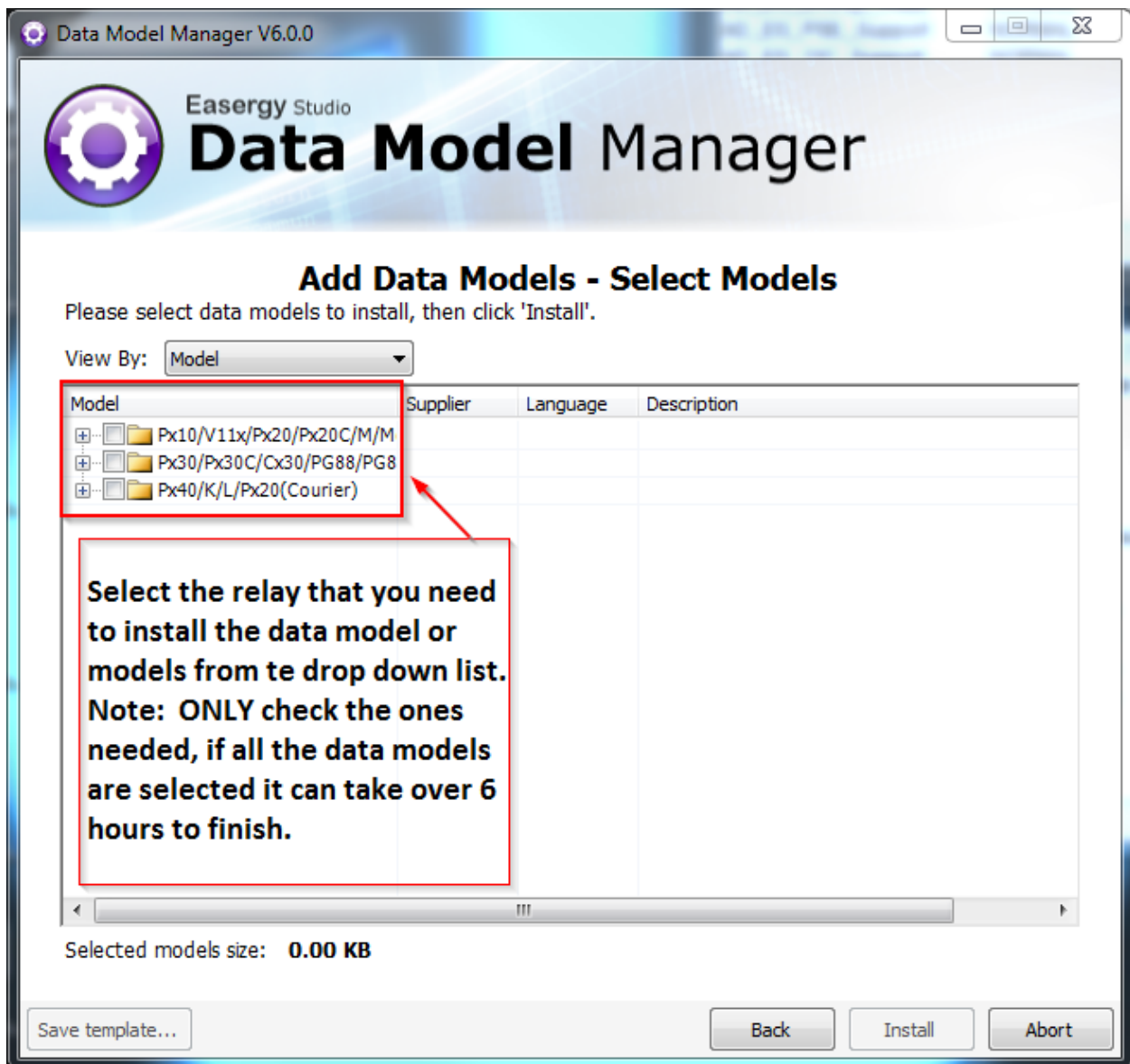
☐ Only selected languages

When this option is checked, only the data models with support for at least one of the selected languages, will appear on model selection page.

Select the appropriate language and click Next.

Next

Abort





Data Model Manager

Add Data Models - Select Models

Please select data models to install, then click 'Install'.

View By:

| Model | Supplier | Language | Description |
|--------------|---------------|----------|--|
| P144 | Schneider Ele | en | Feeder Mgt. with NVD VT Input |
| P145 | Schneider Ele | en | Feeder Mgt. with Function Keys |
| S/w vers. 31 | Legacy | en | |
| S/w vers. 35 | Legacy | en | |
| S/w vers. 36 | Legacy | en | |
| S/w vers. 40 | Legacy | en | |
| S/w vers. 41 | Legacy | en | |
| S/w vers. 42 | Legacy | en | |
| S/w vers. 43 | Legacy | en | |
| S/w vers. 44 | Legacy | en | |
| S/w vers. 45 | Legacy | en | |
| S/w vers. 46 | Schneider Ele | en | |
| S/w vers. A0 | Legacy | en | |
| S/w vers. A1 | Legacy | en | |
| S/w vers. B0 | Legacy | en | |
| P220 | Legacy | en | Motor Protection Relay |
| P225 | Legacy | en | Motor Relay with additional VT Input for Prot. |

In this case a P145 was selected, note the different software versions available. If the software version is known just select the version needed, otherwise select all the software versions. Then click install

Selected models size: **432.96 MB**

Save template...

Back

Install

Abort



Data Model Manager V6.0.0



Easergy Studio

Data Model Manager

Operations log:

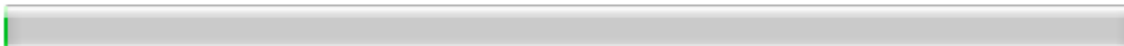
12:52:59.532 Reading local index ended successfully
12:53:14.247 Server name: Default HTTPS
12:53:14.281 Checking access permissions to remote resource.
12:53:16.404 Checking success.
12:53:16.440 Reading index.
12:53:33.000 Reading index ended successfully
12:54:43.719 Downloading data models.
12:54:43.719 Downloading 513 model files.

**The time to download will vary.
It depends on the number of data
models and connection speed.
Can take multiple hours.**

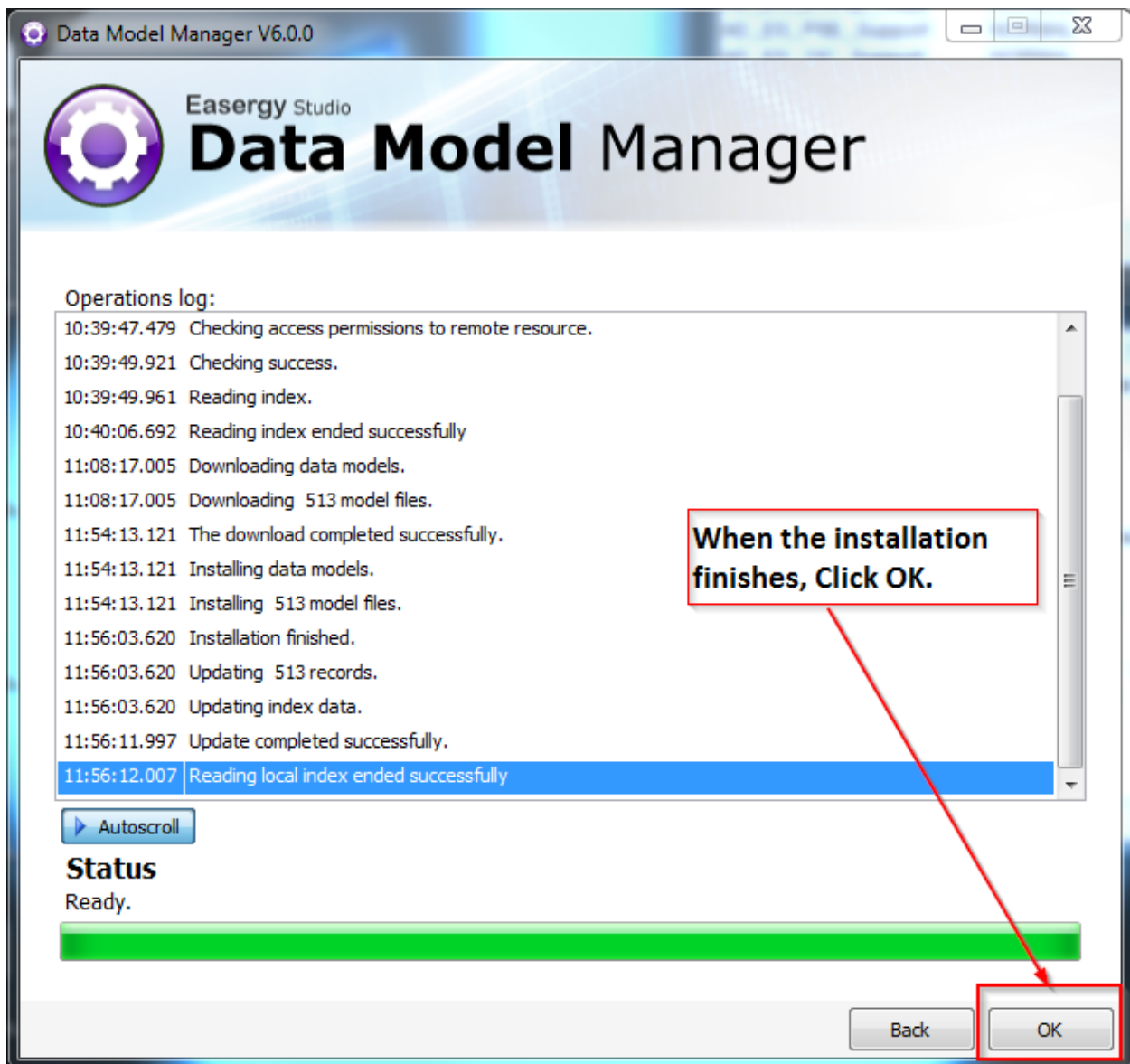
▶ Autoscroll

Status

Downloading file: P145_0A__UK31.PSL



Abort





Easergy Studio

Data Model Manager

Welcome to the Data Model Manager

Before you can use Easergy Studio you must add data models (default files) for your devices. Please select Add and click 'Next'



Add

Select this option to add new data models.



Remove

Select this option to remove installed data models.



Export

Export installed data models to a Data Model Archive file.



Import

Add data models from a Data Model Archive file.

**Click Close, the data models
are now installed and are
available for to use.**

Language

Options

About

Next

Close