

Instruction Bulletin

Replaces 80043-722-01 01/2008

Q-Frame Main Circuit Breaker (225 A Maximum) and Adapter Kit Installation onto an NQ Panelboard Class 1640

Retain for future use.

Introduction

This bulletin contains instructions for installing Square D® brand Q-frame main circuit breaker (225 A maximum) and adapter kit onto a Square D brand NQ panelboard manufactured by Schneider Electric.

Safety Precautions

⚠ DANGER

HAZARD OF ELECTRIC SHOCK, EXPLOSION, OR ARC FLASH

- Apply appropriate personal protective equipment (PPE) and follow safe electrical work practices. See NFPA 70E.
- This equipment must only be installed and serviced by qualified electrical personnel.
- Turn off all power supplying this equipment before working on or inside equipment.
- Always use a properly rated voltage sensing device to confirm power is off.
- Replace all devices, doors and covers before turning on power to this equipment.

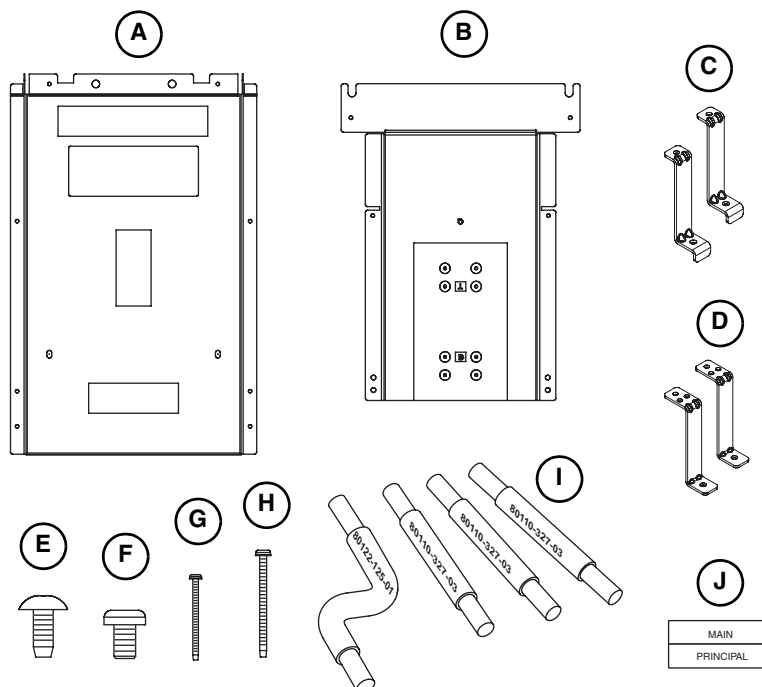
Failure to follow these instructions will result in death or serious injury.

Kit Contents

NQMB2Q and NQMB2Q14

- A. Main circuit breaker deadfront cover (1)
- B. Main circuit breaker mounting pan (1)
- C. **NQMB2Q kit only**–
Deadfront support brackets (2)
- D. **NQMB2Q14 kit only**–
Deadfront support brackets (2)
- E. 10-32 x 7/16-inch tapping screws (2)
- F. 10-32 x 5/16-inch tapping screws (6)
- G. 8-32 x 2 1/4-inch tapping screws (2)
- H. 8-32 x 3 1/4-inch tapping screws (2)
- I. Main lug wires (4)
- J. “MAIN” circuit breaker label (1)

NOTE: Kit contents not shown to scale.



Tools Needed

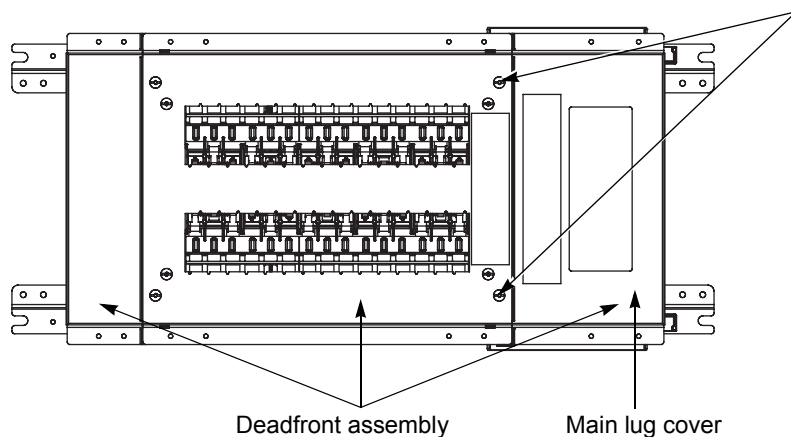


- #2 Square-head Robertson driver
- Torque wrench with 3/8-inch Allen driver



Turn off all power supplying this equipment before working inside the panelboard; follow all lockout/tagout procedures.

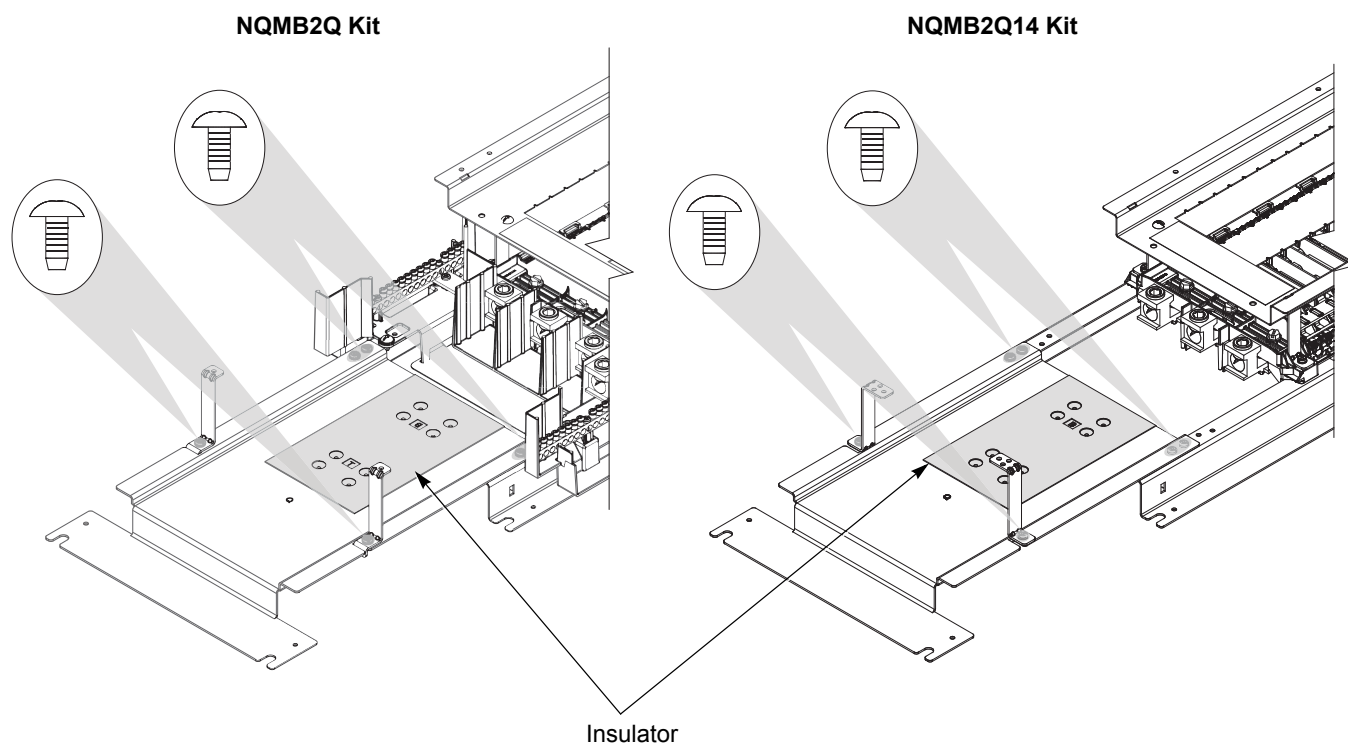
Installing the Main Circuit Breaker and Adapter Kit



- 1 Remove the main lug cover and discard. Retain the two screws for reuse.

2 NOTE: Do not remove the insulator that is located on the main circuit breaker mounting pan.

Attach the main circuit breaker mounting pan to the main lug end of the panelboard using four 10-32 x 5/16-inch tapping screws included in the kit.



3 For installing the NQMB2Q kit:

Attach the two deadfront support brackets to the alignment slots on the main circuit breaker mounting pan (with the top of the brackets pointing to the panelboard, as shown) using the remaining two 10-32 x 5/16-inch tapping screws included in the kit.

For installing the NQMB2Q14 kit:

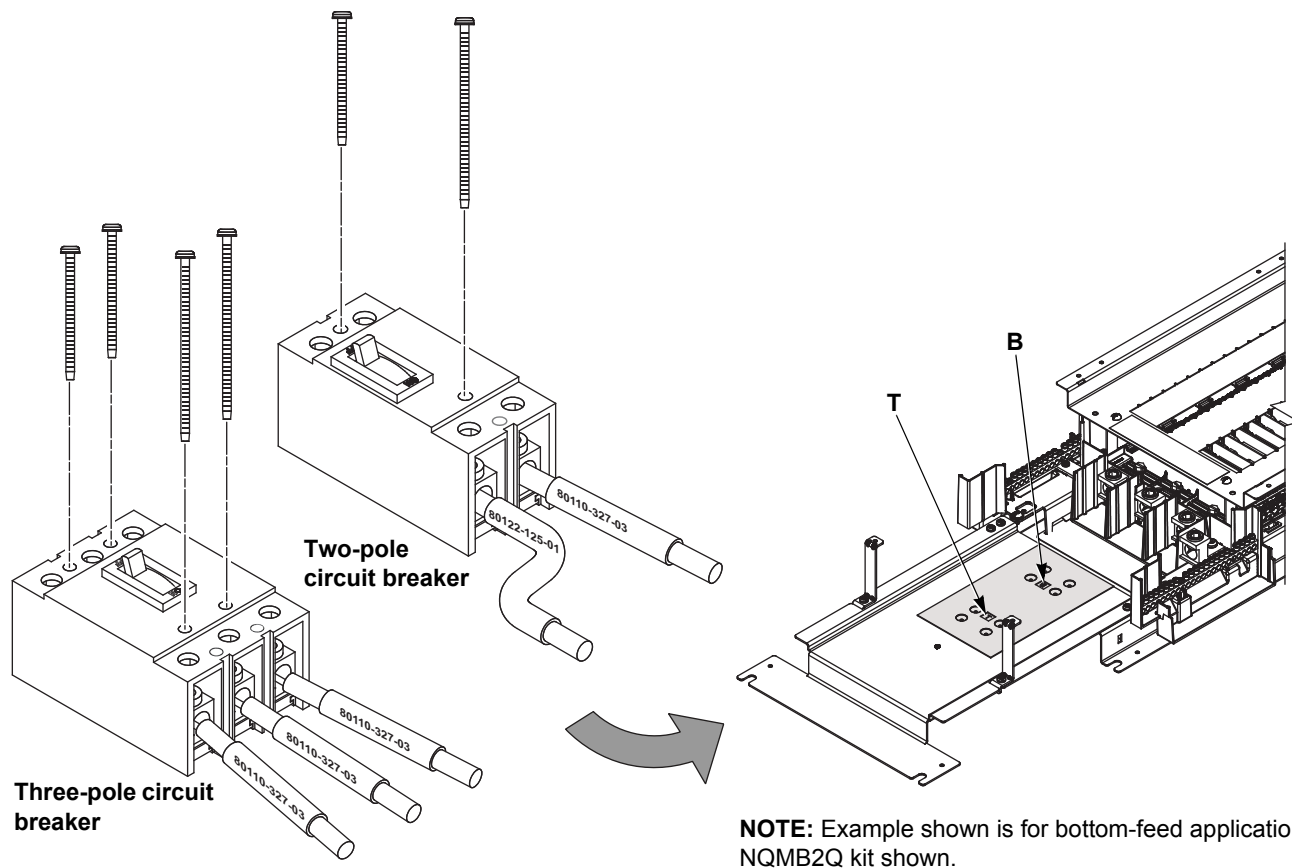
Attach the two deadfront support brackets to the main circuit breaker mounting pan (with the top of the brackets pointing inward, as shown) using the remaining two 10-32 x 5/16-inch tapping screws included in the kit.

Connecting the Main Circuit Breaker to Panelboard Bus Structure

- 4** Insert the wires loosely into the circuit breaker lugs.

NOTE: For bottom-feed applications, mount the main circuit breaker in the holes marked with “B” on the mounting pan. For top-feed applications, mount the main circuit breaker in the holes marked with “T” on the mounting pan. The circuit breaker should be installed so that the “ON” end will always be positioned toward the top of the panelboard.

NOTE: The circuit breakers are shown in the “OFF” position.

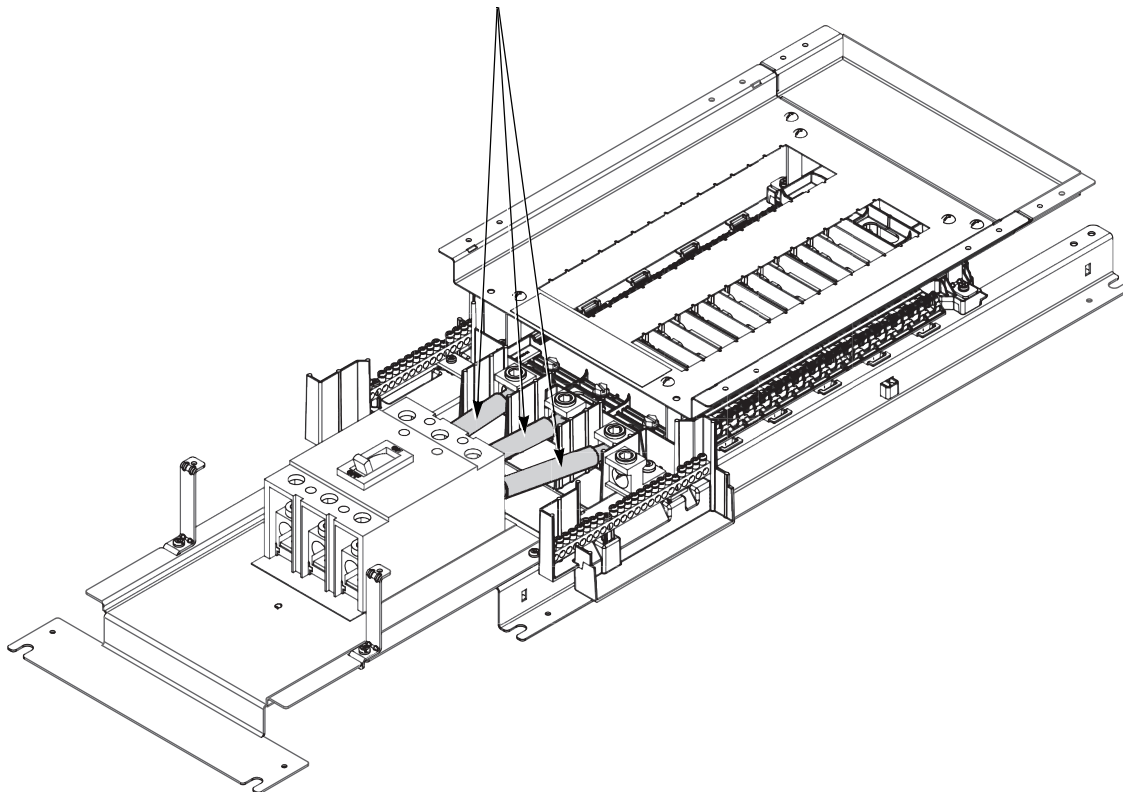


- 5** **NOTE:** Discard the screws supplied with the breaker.

Install the main circuit breaker on the mounting pan using the 8-32 x 3 1/4 and 8-32 x 2 1/4-inch tapping screws included in the kit.

- 6** Verify that the wire connectors are properly inserted into the lugs on the panelboard and the circuit breaker lugs. Discard any unused wire connectors.

NOTE: NQMB2Q kit shown.

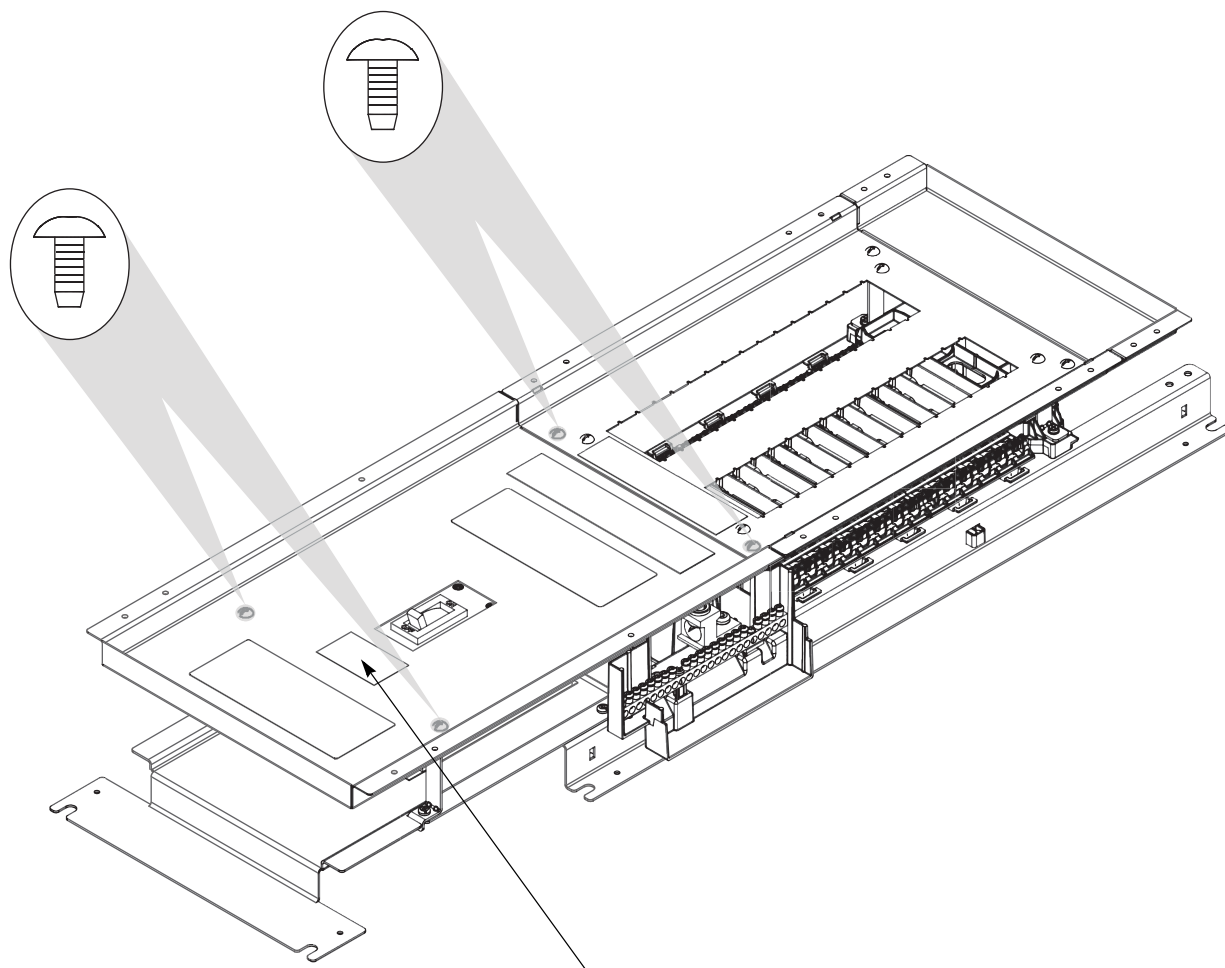


- 7** Tighten the panel main lug wire binding screws to 275 lb-in (31 N•m).

- 8** Refer to the circuit breaker label for the appropriate lug torque value.

- 9** Attach the main circuit breaker deadfront cover to the panelboard deadfront using the two 10-32 x 7/16 inch tapping screws supplied in the kit and the two screws retained from Figure 1.

NOTE: NQMB2Q kit shown.



- 10** Peel off the backing of the “MAIN” circuit breaker label. Apply it to the cover near the circuit breaker handle.



For technical support on the installation of this kit, contact the Square D / Schneider Electric Customer Information Center at 1-888-SquareD (1-888-778-2733).

Schneider Electric USA
252 North Tippecanoe
Peru, IN 46970 USA
1-888-SquareD (1-888-778-2733)
www.us.SquareD.com

Square D® is a trademark or registered trademark of Schneider Electric. Other trademarks used herein are the property of their respective owners.

Electrical equipment should be installed, operated, serviced, and maintained only by qualified personnel. No responsibility is assumed by Schneider Electric for any consequences arising out of the use of this material.