

Multi-Loader - Firmware update

Update ATV12 / ATV32



Version 2

Schneider
Electric

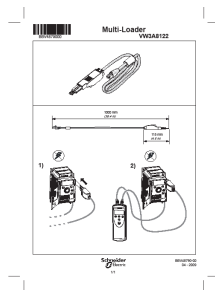
References needed to update product firmware

- VW3 A8 121

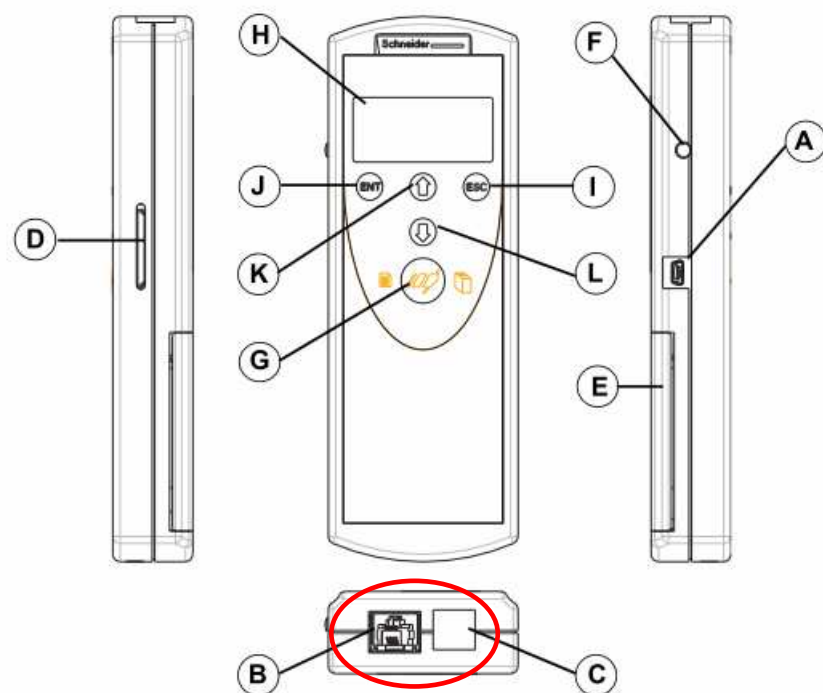


- VW3 A8 122 (specific cable)

See IS BBV4879000 below (or see Annexe 1)



Connection on Multiloader side



Connectors labelled B& C are used to update products firmware version.

- RJ45 cable connected to B
- VW3 A8 122 connected to C

Figure 2

Letter	Description	Comments
A	Mini-B USB connector	The connection between the Multi-Loader (USB Mini-B type) and the PC (USB type A) is via a 1 m (3.28 feet) USB type A to Mini-B cable.
B	RJ 45 connector	The connection between the Multi-Loader and the device is via a RJ45 cable to load and transfer configuration files or updated application
C	RJ11 connector with label cover	This connector is reserved for Schneider Electric product support.

Step by step procedure software update

DANGER

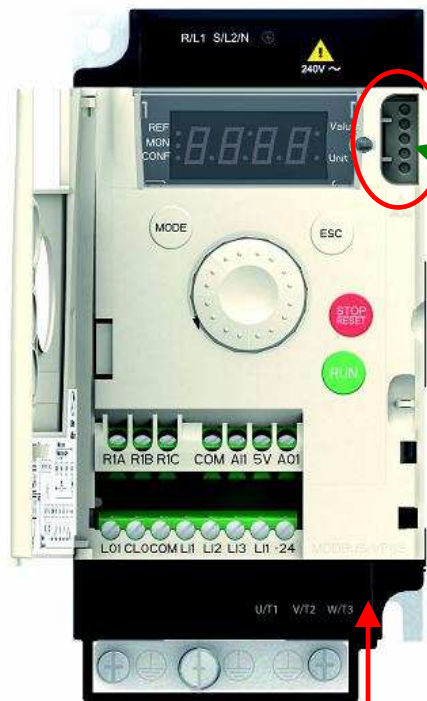
RISK OF ELECTRIC SHOCK, EXPLOSION, OR ARC FLASH

The drive must be powered off before performing the step by step procedure software update

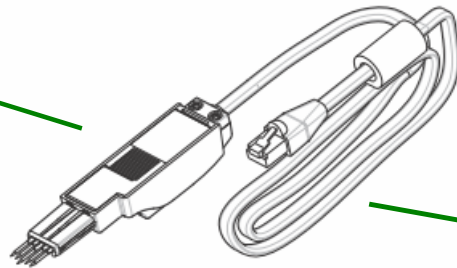
Failure to follow these instructions will result in death or serious injury.

1. Remove all power from the drive and from all enclosures housing the drive and wait 15 minutes to allow the DC bus of the drive to discharge.
2. Insert the Multi-Loader's communication cables into the RJ45 and RJ11 communication ports. (Refer to page 3.)
3. Connect the cables to the drive (refer to pages 5 & 6).
4. Perform the desired transfer (refer to pages 7 & 8)
5. Upon completing the transfer, remove the Multi-Loader communication cables from the drive.
7. Install and close all covers and doors before reapplying power to the drive.
8. Update the identification of the software revision on the drive.

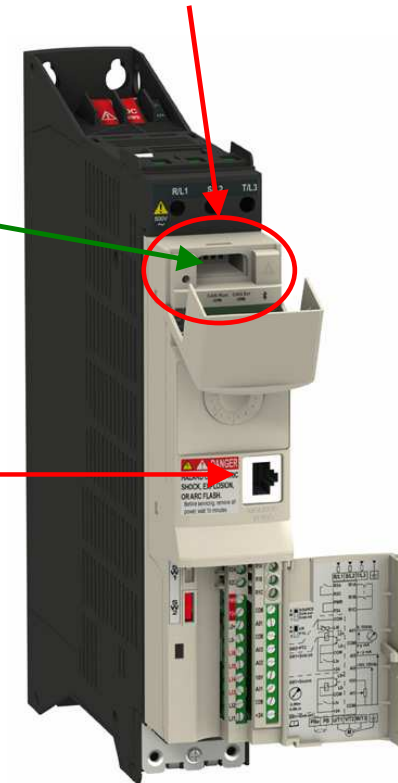
Connection on Drives side



RJ45



On ATV32, connector is behind the protective covert

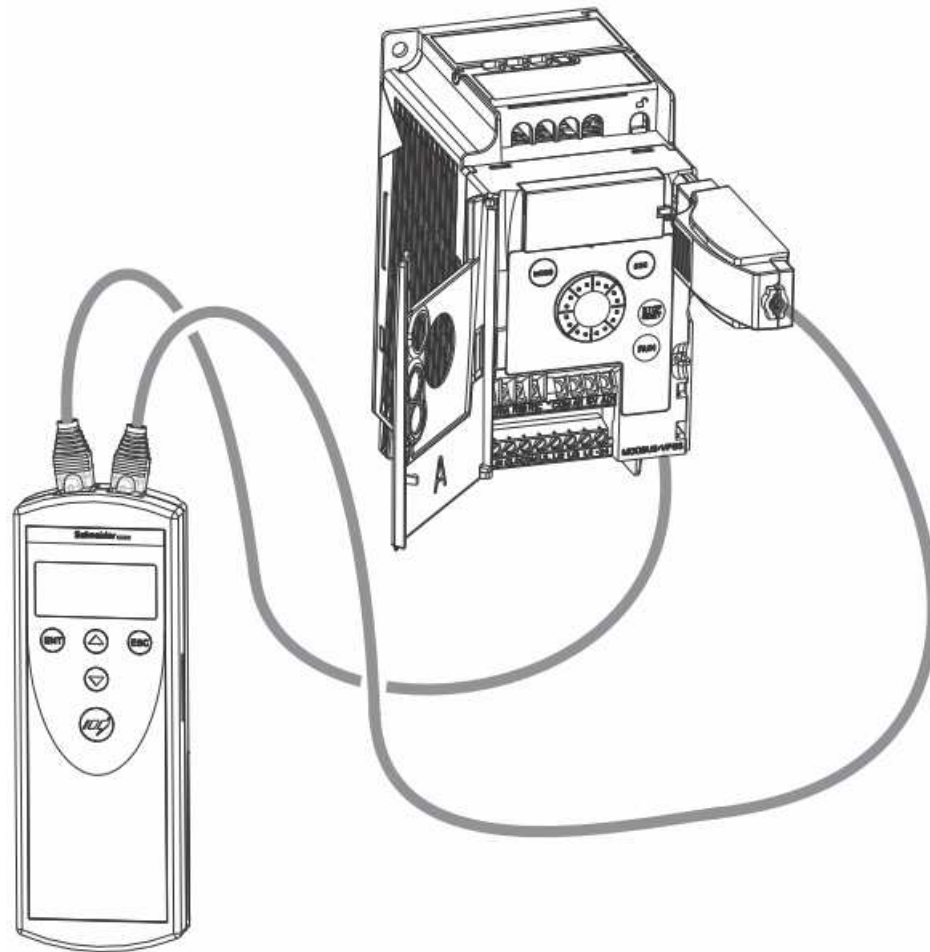


RJ45

Complete connection Drive / Multi-Loader

Before starting the flashing operation, check that the drive and the Multiloader are well connected as described in this picture.

In case of wrong connection the update will not be done successfully.



Process to flash 1/2

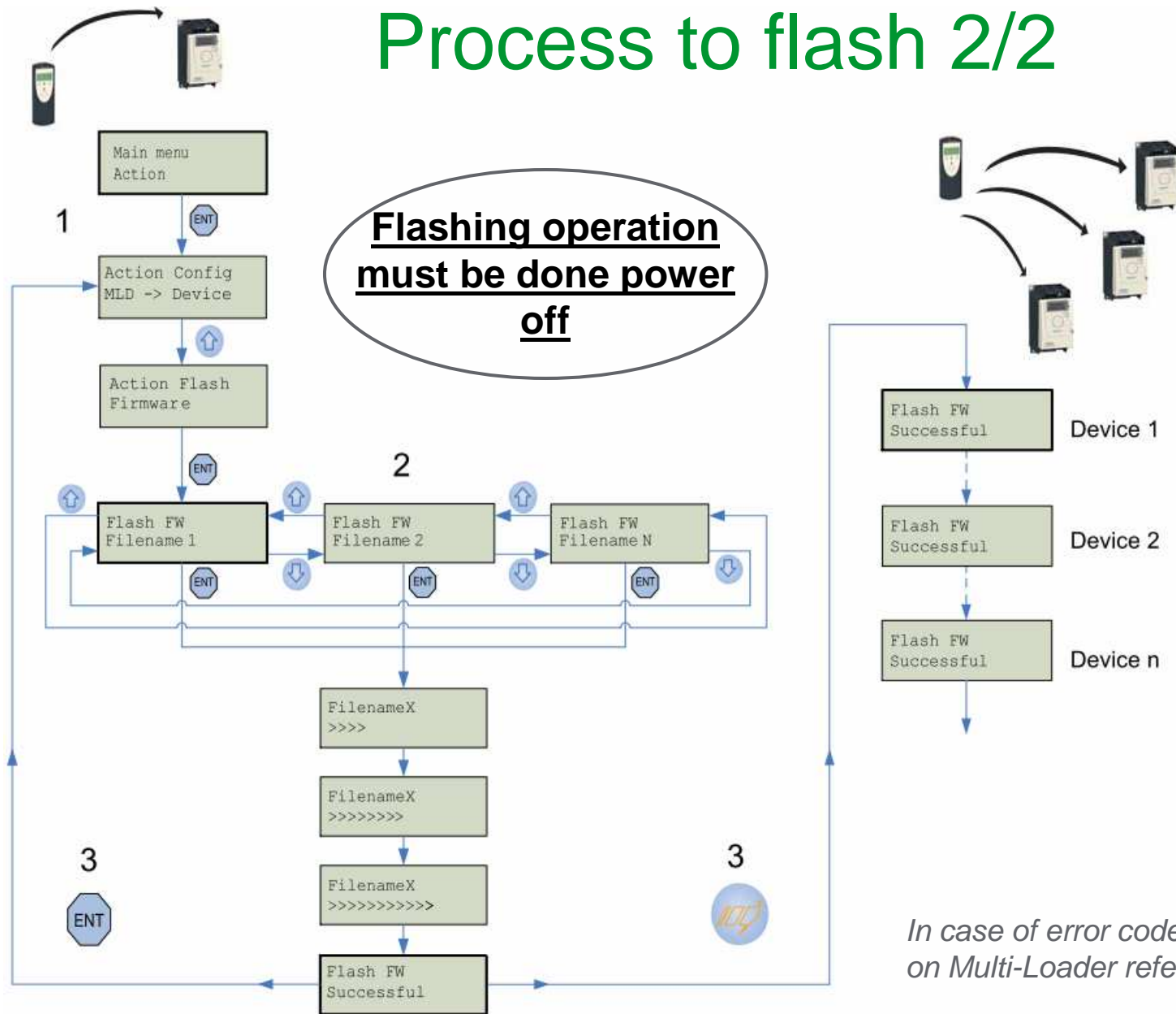
The procedure below describes how to select the device update file and start the update drive operation.

The user must already have :

- Download the update file from www.schneider-electric.com.
- Transferred the file to the Multi-Loader (refer to p13 of User Manual).

STEP	Transfer	Quick Store
1	<ul style="list-style-type: none">• Turn the Multi-Loader on using the ON/OFF button 'F' (see page 3).• Connect the Multi-Loader to the device using the RJ45 cable and VW3 A8 122 cable.• Press 'ENT' when the screen displays Main menu / Action.• Select the Action Flash / Firmware menu using the arrow keys and press 'ENT'.	
2	<ul style="list-style-type: none">• Select the file to be transferred using the arrow keys and press "ENT" to start the transfer. If no device is connected, a message (No device connected) appears on the screen	
3	<ul style="list-style-type: none">• The firmware update file has been loaded successfully onto the device; disconnect the RJ45 cable from the device.• Pressing "ENT" returns the user to the "Action Config" menu if no other devices require updating.	<ul style="list-style-type: none">• Connect the Multi-Loader to the next device, then press the Quick Store key.• Flash FW Successful: The firmware update file has been loaded successfully onto the device; disconnect the RJ45 cable from the device.• This action can be carried out as many times as necessary.

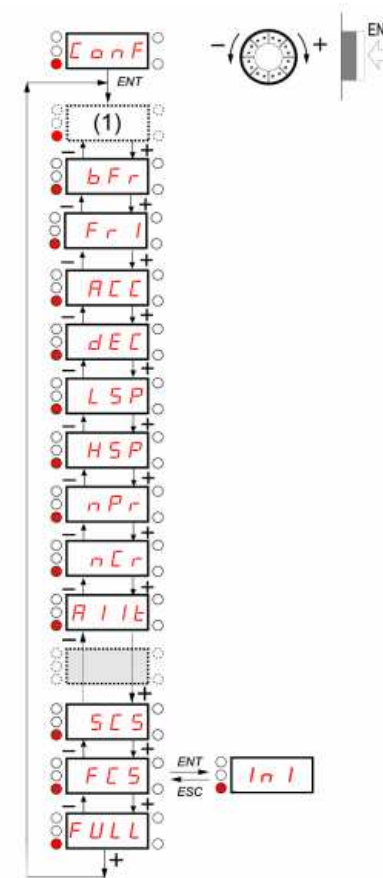
Process to flash 2/2



ATV12 & CFF status

Following the update of the ATV12 firmware (V1.1 to V1.2) with Multiloader:

- On first start up, product display CFF
- Do a factory setting (FCS = Inl).



Error codes

Codes	Display on the Multi-Loader
General	
Flash FW FAULT - 0x01	Wrong memory write detected
Flash FW FAULT - 0x02	Wrong check at the end of the upgrade detected
Flash FW FAULT - 0x11	Interruption connection detected or wrong file
Flash FW FAULT - 0x12	Missing file on the SD card Path too long
Flash FW FAULT - 0x13	File in a wrong format (Drives)
Flash FW FAULT - 0x14	File in a wrong format (Graphic keypad)

Codes	Display on the Multi-Loader
Specific application FW	
Flash FW FAULT - 0x21 - 0x31	Wrong communication detected
Flash FW FAULT - 0x22 - 0x32	Wrong reference detected
Flash FW FAULT - 0x23 - 0x33	Wrong communication detected (baud rate)
Flash FW FAULT - 0x24 - 0x34	Wrong program erase detected
Flash FW FAULT - 0x25 - 0x35	Wrong program download detected

Specific motor control FW	
Flash FW FAULT - 0x4a	Wrong download detected
Flash FW FAULT - 0x40	Flashing Motor Control is not allowed when the drive is Power On
Flash FW FAULT - 0x41	Wrong communication detected
Flash FW FAULT - 0x42	Inquiry device failed
Flash FW FAULT - 0x43	Selection device failed
Flash FW FAULT - 0x44	Inquiry of clock modes failed
Flash FW FAULT - 0x45	Selection of clock modes failed
Flash FW FAULT - 0x46	Inquiry of write line size failed
Flash FW FAULT - 0x47	Wrong communication detected (baud rate)
Flash FW FAULT - 0x48	End setting data failed
Flash FW FAULT - 0x49	Wrong memory write detected

Additional error code are described in the User Manual BBV48778 04/2010

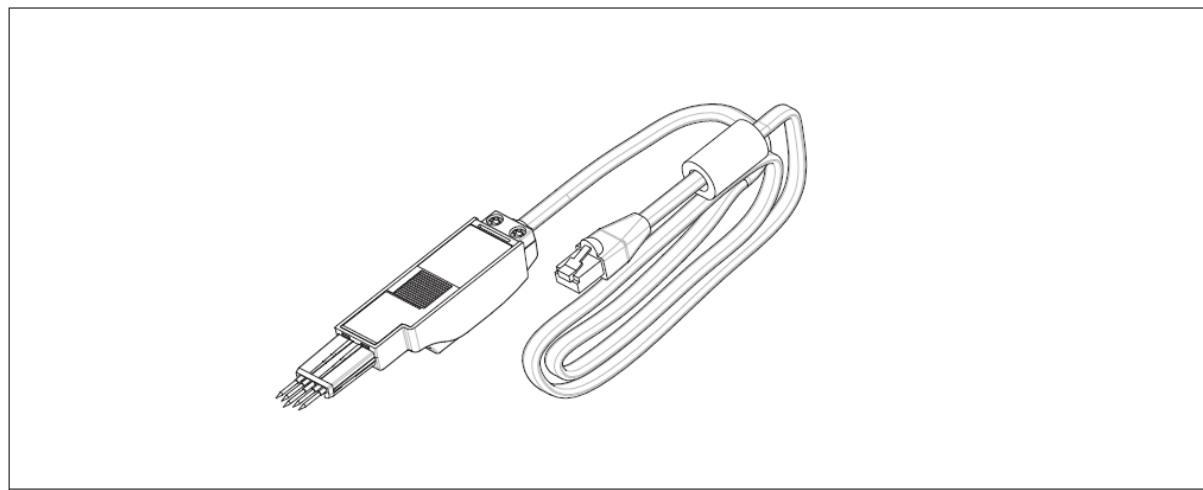
Annexe 1

IS Multi-Loader VW3A8122 (1/2)



BBV4879000

Multi-Loader
VW3A8122



IS Multi-Loader VW3A8122 (2/2)

