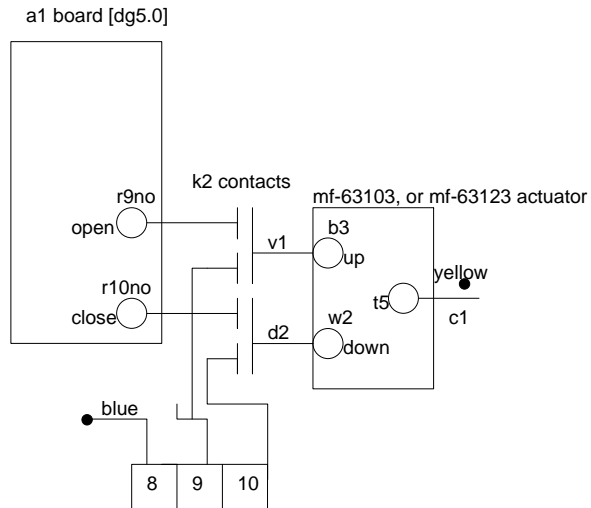
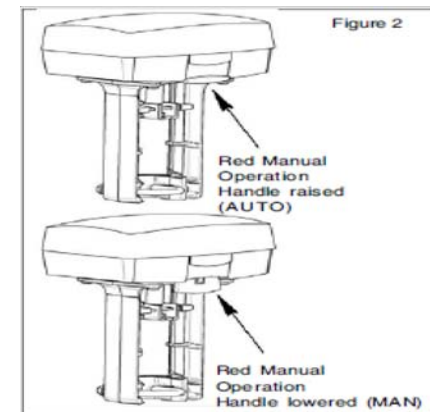
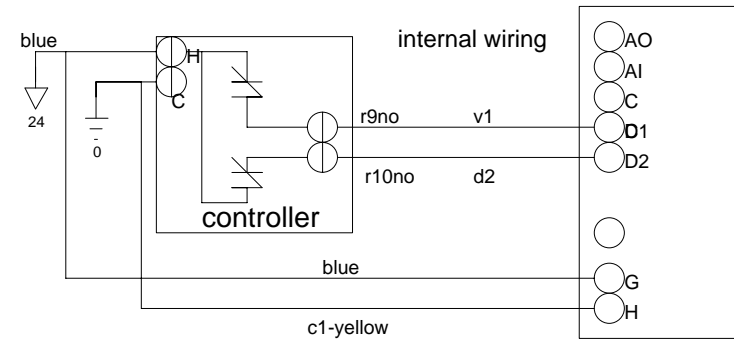


Original Wiring



New Wiring



NOTE: The above schematic works for M400 & M800 actuators

NOTE: The system needs a 30VA transformer for the new actuator

NOTE: The actuator dipswitches need to be adjusted for Floating [24v open & 24v close]

Dipswitches 1 & 2 on and the rest off

NOTE: Manual operation

There is a red manual operation handle on the actuator, see figure 2.

When it is lowered, the motor stops. Then the actuator can be operated manually if the handle is turned.

ATTENTION: actuators is shipped with manual override lowered (MAN). For normal operating, the handle must be raised (AUTO).

Title M400/M800 Actuator to DG5 Board		
Author Raymond Mills		
File DG5 to M400_M800 Wiring Instructions.pdf CAD files\m400_m800 actuator to DG5 board.dsn		Document
Revision 1.0	Date 21 December 2011	Sheets 1 of 1