

Rotary push-button dimmers

RL, 230 V, 1000 VA - SDN22009XX

Area of application

- Regulation of different loads (see load table) for homes and buildings.
- As the regulator reduces the current supplying the load, it allows considerable energy savings.
- A comfort feature: setting minimum brightness level.
- Additional ON/OFF supply possibility to additional load with separated terminal output.

Technical data

- Rated voltage: 230 V AC \pm 10 %, 50 Hz
- Load on the switch output: max. 2 A, $\cos \phi$ 0.6,
- IP degree of protection: IP20,
- Conformity mark: CE,
- Standard: EN 60669-2-1,
- Product certification: GOST-R.

Load table

	1	2	3	4	5
25 °C 230 V 50 Hz					
Max.	1000 W	1000 W	1000 VA	NO	600 VA
Min.	40 W	40 W	60 VA		60 VA

- 1 - Incandescent lamps
2 - Halogen lamps
3 - Low voltage halogen lamps with ferromagnetic transformer
4 - Low voltage halogen lamps with electronic transformers
5 - Single-phase motors

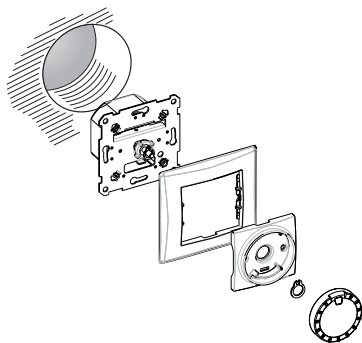
Installation

The maximum allowed load is reduced due to the decreased heat dissipation when you do not install the device into a single standard flushmounting box:

Load reduction by	Mounted in cavity walls*	Several installed together in combination*	In 1-gang or 2-gang surface-mounted housing	In 3-gang surface-mounted housing
25 %	■	■		
30 %			■	
50 %				■

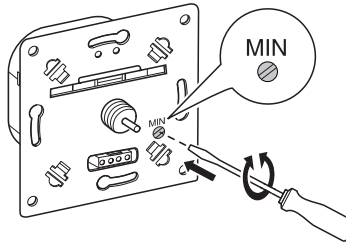
* If several factors apply, add the load reductions together.

Installing the dimmer and covers



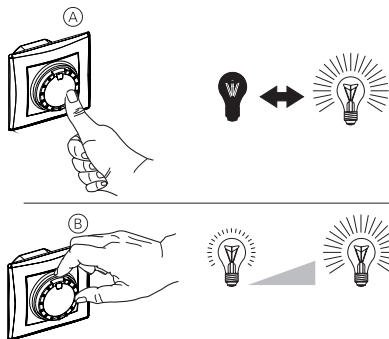
Use

Setting the minimum brightness of the lamps



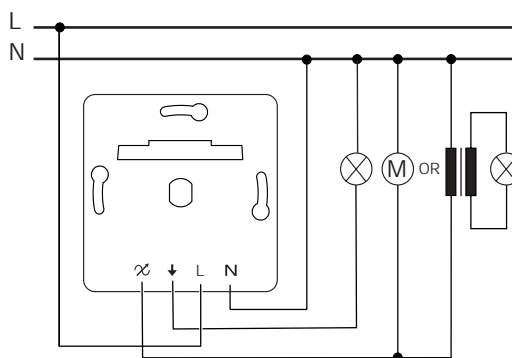
- ① Set the dimmer.
- ② Dim the brightness right down using the rotary knob.
- ③ Set the minimum brightness using the set-screw (MIN).

Operating the dimmer



You switch the connected lamps on and off by simply pressing the rotary knob (A).
By turning the rotary knob (B), you dim the lamps brighter or darker.

Connections



∞ : controlled/dimmed output
+ : ON/OFF output

Dimensions (mm)

