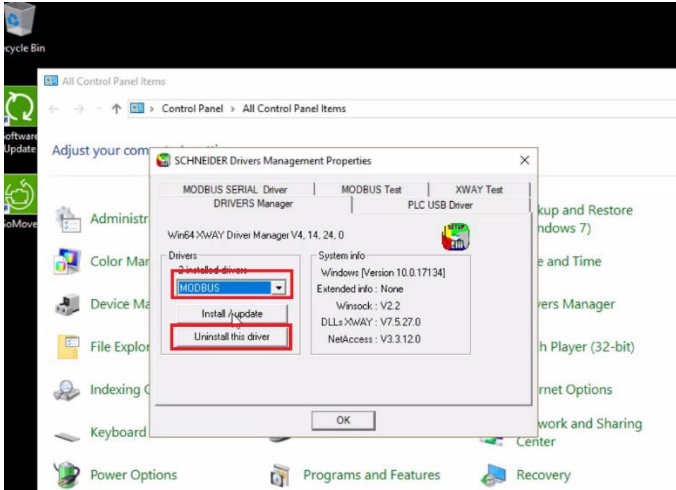
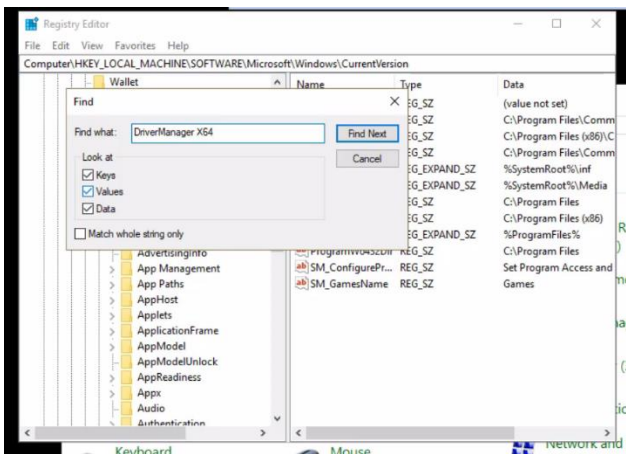


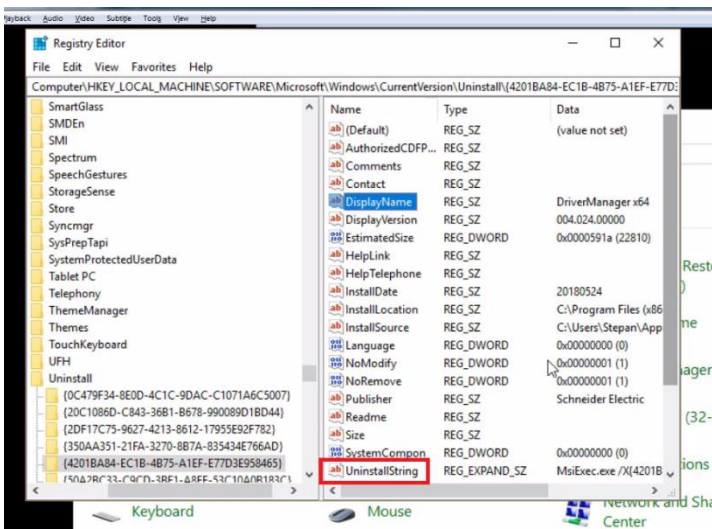
- 0) Disconnect the cable
- 1) Remove Modbus driver in Schneider Electric Driver management properties (can be found on Control panels)



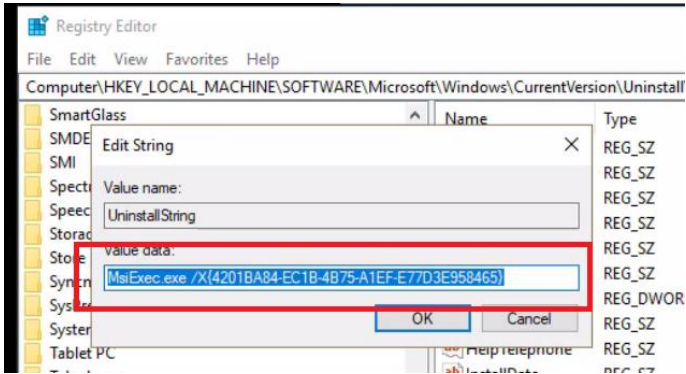
- 2) Open registry editor and search for „DriverManager X64“



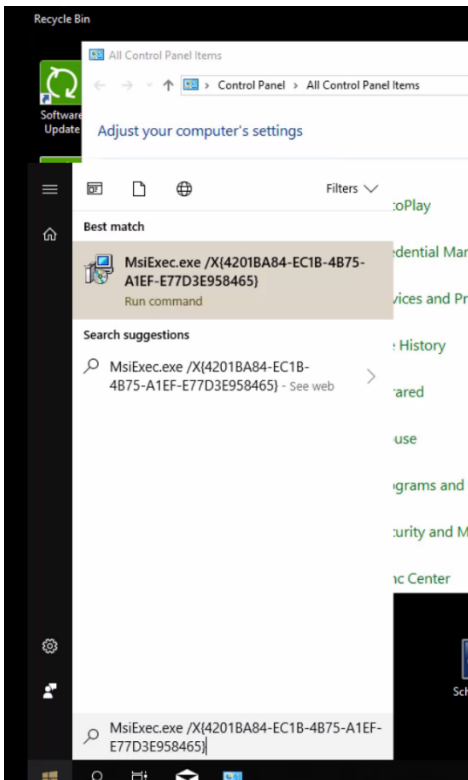
- 3) It will find registry folder for this driver. Open UninstallString register



4) Copy the value



5) Past it in search row in windows or in RUN row. Driver will be completely uninstll.

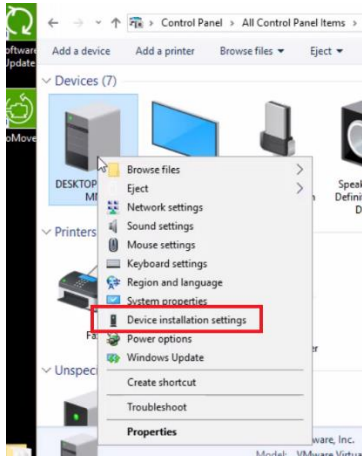


6) Restart the PC

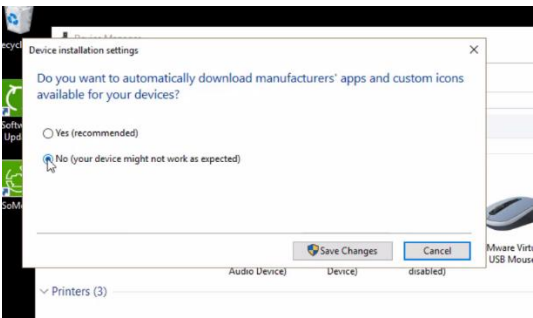
7) Download new driver <https://schneider-electric.box.com/s/2adk9fagckmlkyvfd9e2ugb11y7ctb34>

8) Install it as administrator

9) Open Devices and printers, right click on PC and open Device installation setting



10) Disable automatic updates of drivers



11) Connect the cable and enjoy 😊