

EXPORTAÇÃO/IMPORTAÇÃO DE VARIÁVEIS XML – UNITY.

Objetivo: Ilustrar as operações para exportar/ importar lista de variáveis XML – Unity Pro.

Versões de Software:

Unity:

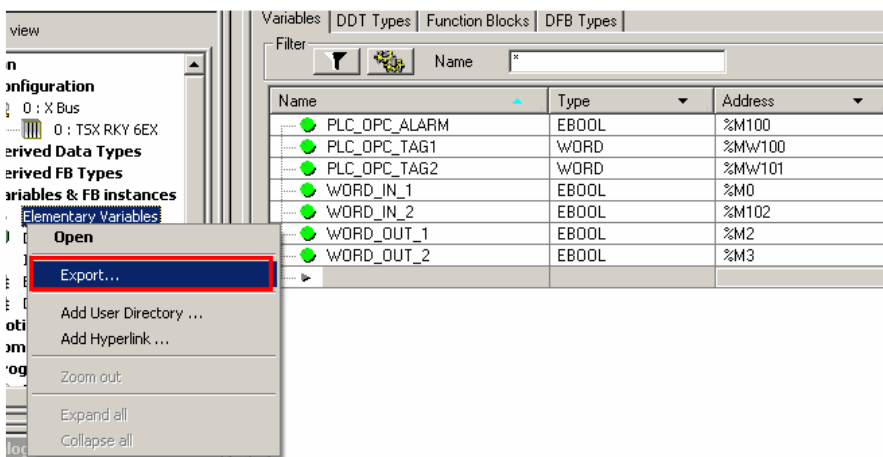


Microsoft Excel:

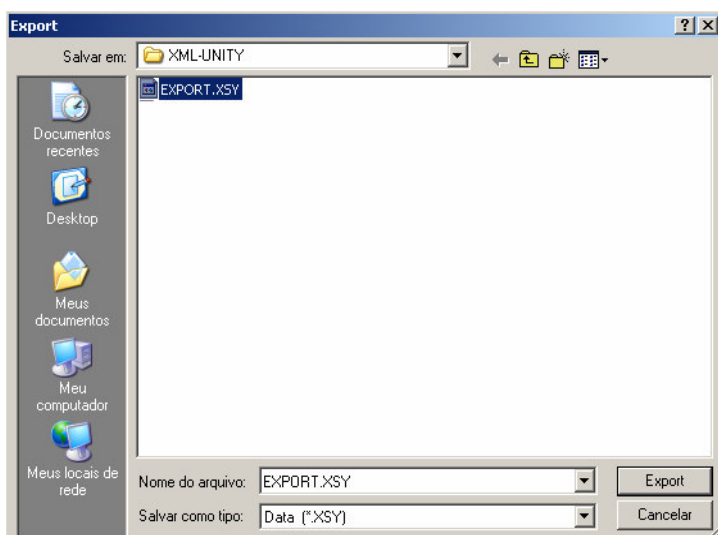


Exportar arquivo XML – Unity:

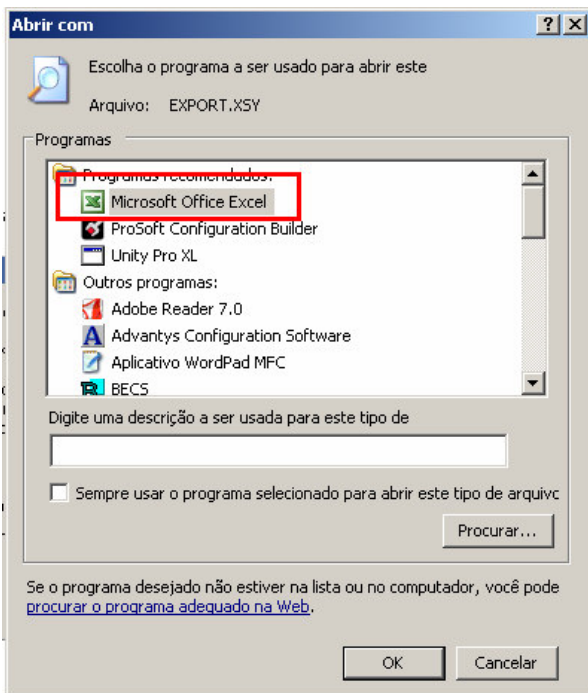
A partir de uma tabela de variáveis criada em **Elementary Variables**, clicar em **Export**:



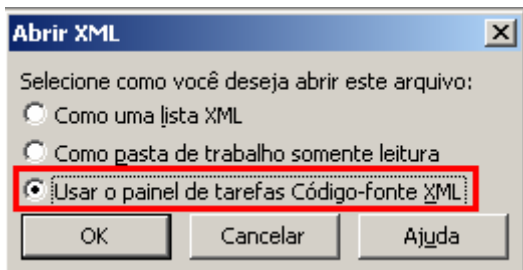
Salvar a tabela exportada no formato ***.XSJ**:



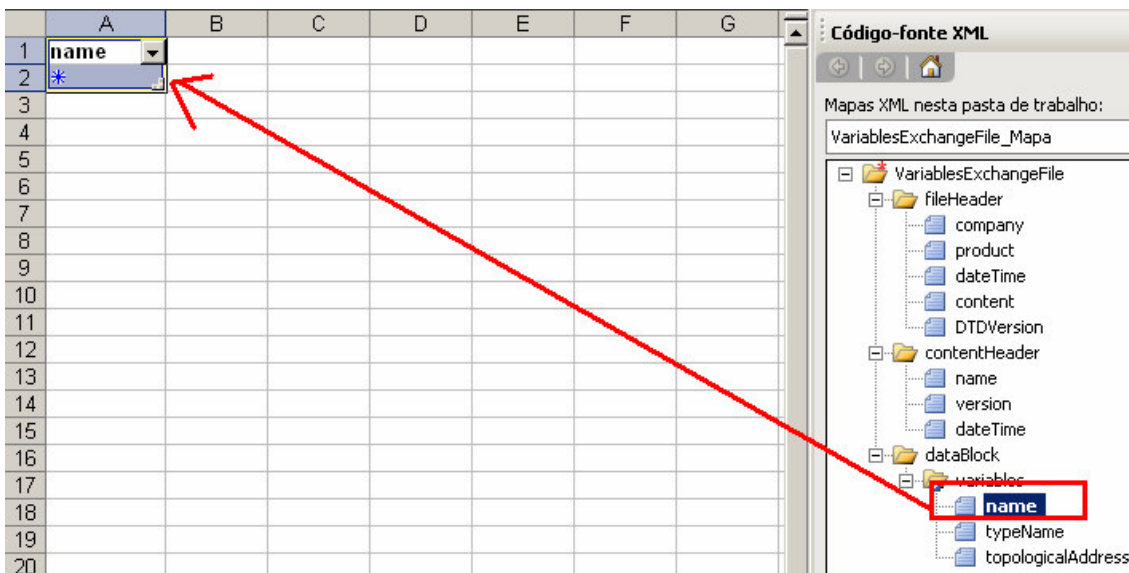
Abra o arquivo exportado, escolhendo o Excel como ferramenta:



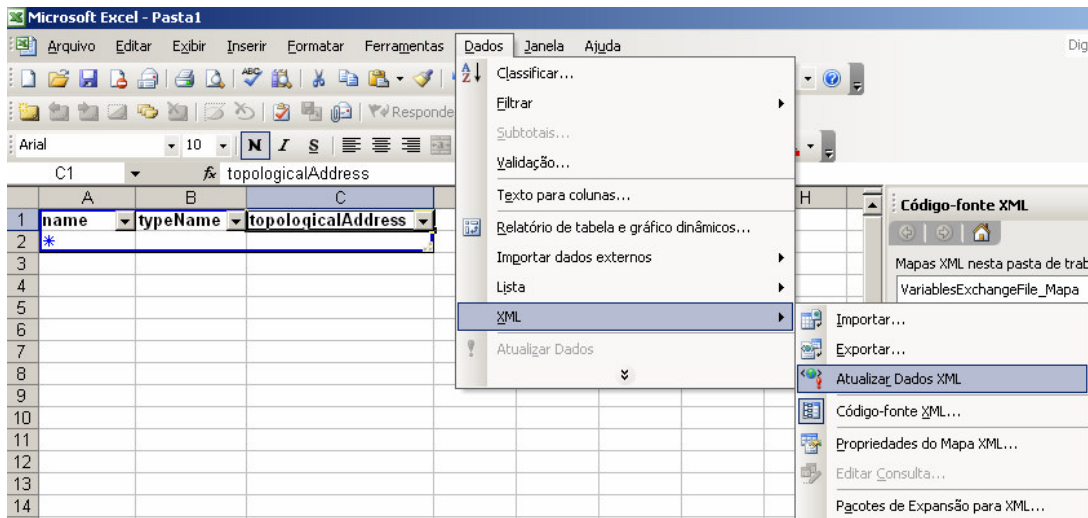
Ao abrir, escolha a opção abaixo:



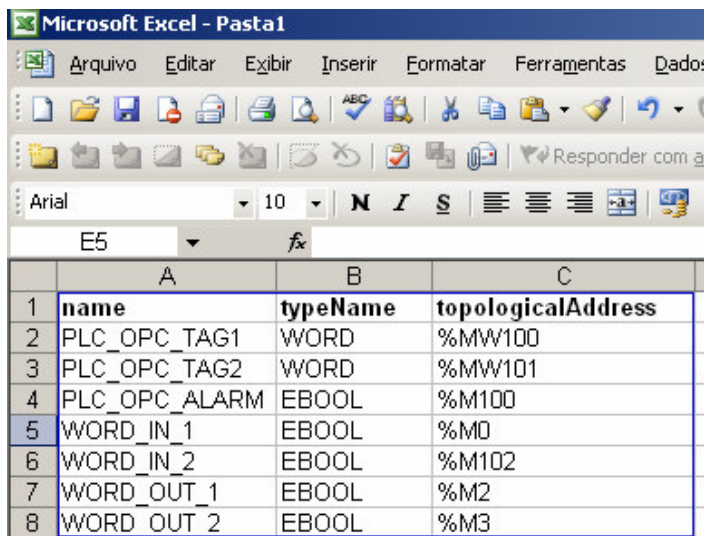
Clicar sobre **“dataBlock”** e arrastar para a célula A1 da planilha:



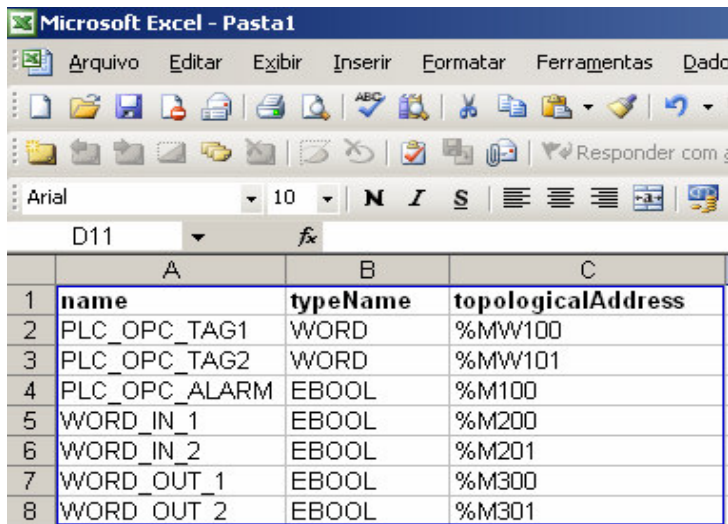
Uma vez configurados pode-se manipular os dados exportados:



Atualiza-se então, o mapa de variáveis:

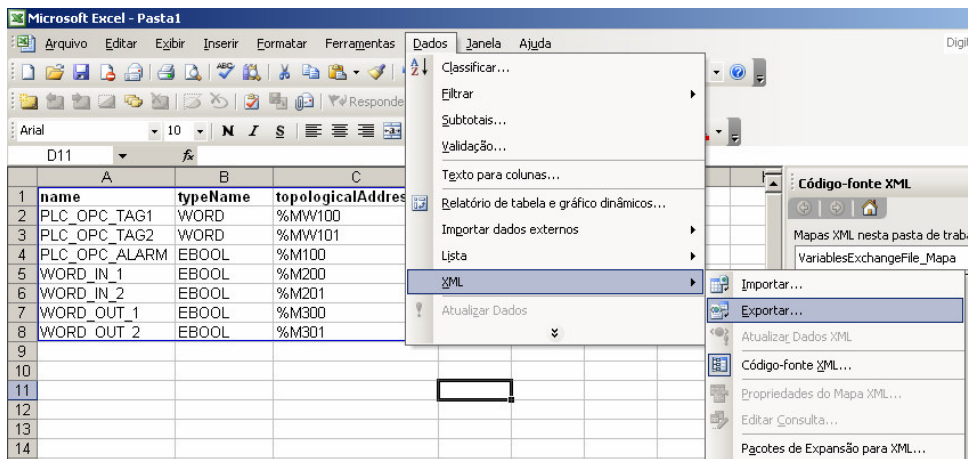


A partir de então, pode-se criar ou editar as variáveis:

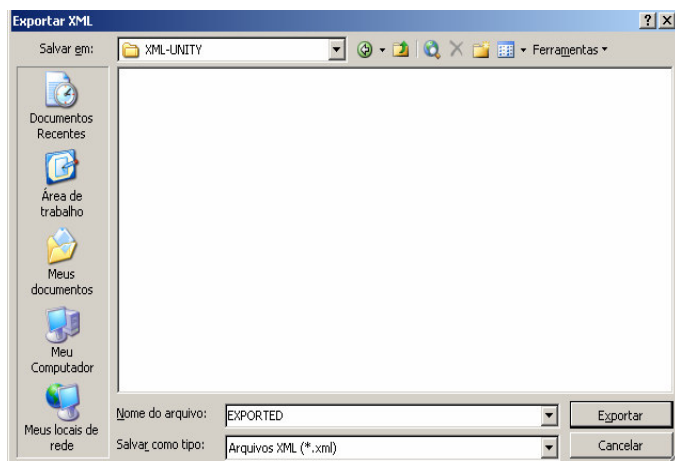


Importar arquivo XML – Unity:

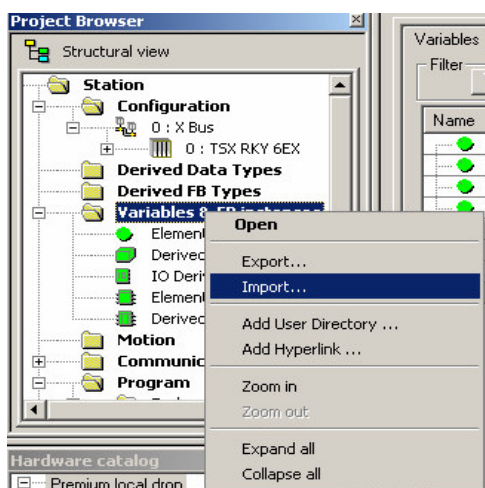
Para retornar ao Unity, exporta-se novamente:



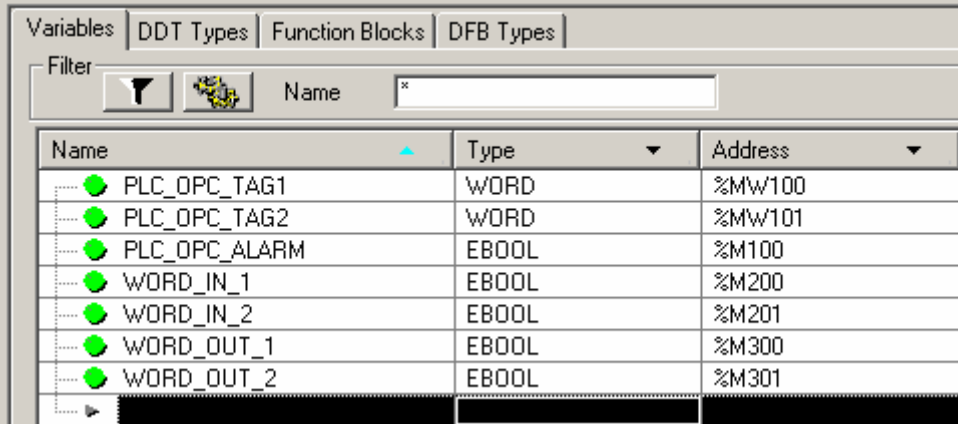
Se salva no formato ***.XML** e em seguida, mudar a extensão do arquivo para ***.XSY**:



Para importar:



Por fim, faz-se um **Build** e compila-se a nova tabela de variáveis:



The screenshot shows a software interface with a tabbed menu at the top containing 'Variables', 'DDT Types', 'Function Blocks', and 'DFB Types'. The 'Variables' tab is active. Below the tabs is a 'Filter' section with a funnel icon, a search icon, and a text input field containing an asterisk (*). The main area is a table with three columns: 'Name', 'Type', and 'Address'. Each row in the table has a green circular icon to the left of the 'Name' column. The table contains the following data:

Name	Type	Address
PLC_OPC_TAG1	WORD	%MW100
PLC_OPC_TAG2	WORD	%MW101
PLC_OPC_ALARM	EBOOL	%M100
WORD_IN_1	EBOOL	%M200
WORD_IN_2	EBOOL	%M201
WORD_OUT_1	EBOOL	%M300
WORD_OUT_2	EBOOL	%M301